

The Victorian Gazebo II Assembly Instruction

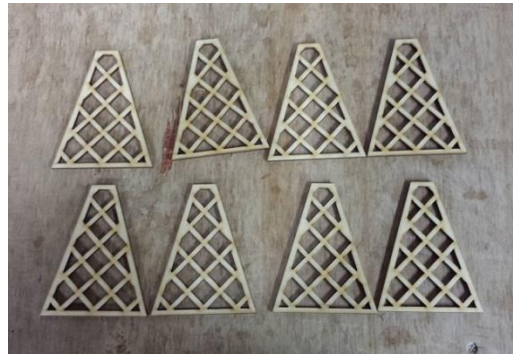
By Laser Dollhouse Designs



Parts for Assembly



Frame Rails



roof frames



Base support frames



roof base support frames



Turret rings numbered 0-20 (Note in 1:48 only Numbered from 1-10)



Stairs Assembly



Chair Assembly



8 Roof rail frames



Lower and mid Roof support s



Upper and lower base

Step 1. locate the upper Base as seen in Figure 1 and flip upside down. Position the single notch facing toward you.



Figure 1



Figure 2

Step 2. Take the base support with the engraved company name and insert to the rear. Make sure single tab is facing up, see figure 2.

Step 3. Locate the base support with only one center tab and insert to the front as seen in figure 3



Figure 3

Step 4. Place the remaining base supports into the outer slots making sure that the center tab only side faces up. See figure 4.



Figure 4



Figure 5

Step 5. Place the bottom base by aligning slot openings to base support tabs. See figure 5.

Step 6. Flip completed base right side up. See figure 6



Figure 6



Figure 7

Step 7. Insert gazebo frame rails as seen in figure 7

Step 8. Install lower roof support ring as seen in figure 8.



Figure 8

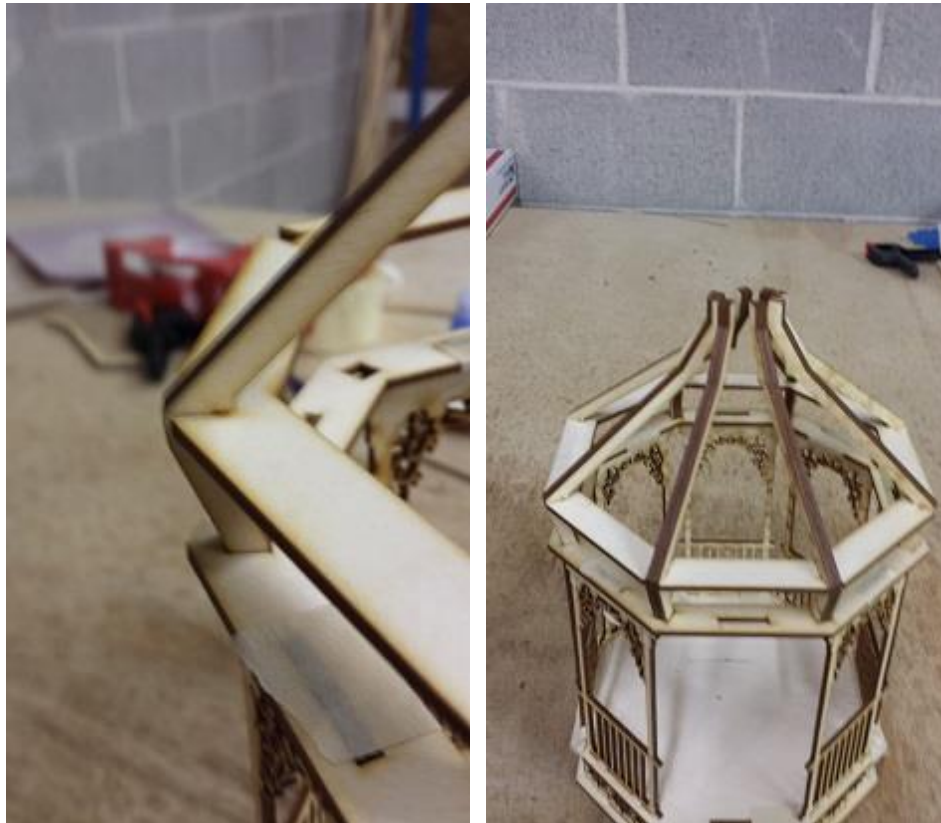


Figure 9

Step 9. Install roof rails and mid roof support as seen in figure 9.

Step 10. Add gazebo turret ring T0 as seen in figure 10. (Note this is T1 in 1:48 scale)



Figure11



Figure10

Step 11. Install center guide into turret ring as seen in figure 11.

Step12. Install the remaining rings by following the numbers or make your own design. See figures 12



Figure13



Figure12

Step13. Cut excess of remaining unused center guide with a knife. Once cut sand point to desired length. See figures 13

Step 14. Install roof alignment guide frames as seen in figure 14



Figure15



Figure14

Step 15. Continue with supports until all eight are in place as seen in figure 15

Step 16. Install roof base support frames, wider end faces up, as seen in figure 16



Figure17

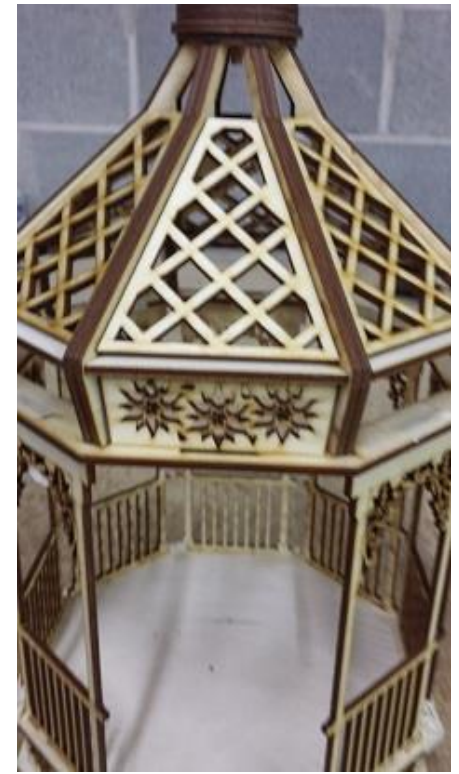


Figure16

Step 17. Continue with supports until all eight are in place as seen in figure 17

Step 18. Install stairs as seen in figure 18



Figure19



Figure18

Step 19. Assemble chair lower section as seen in figure 19

Step 20. Add seat back as seen in figure 20 . Put stair inside or outside gazebo as you see fit. Gazebo is completed.



Figure20



Laser Dollhouse Designs

www.laserdollhouses.com

Email: laserdollhouses@aol.com