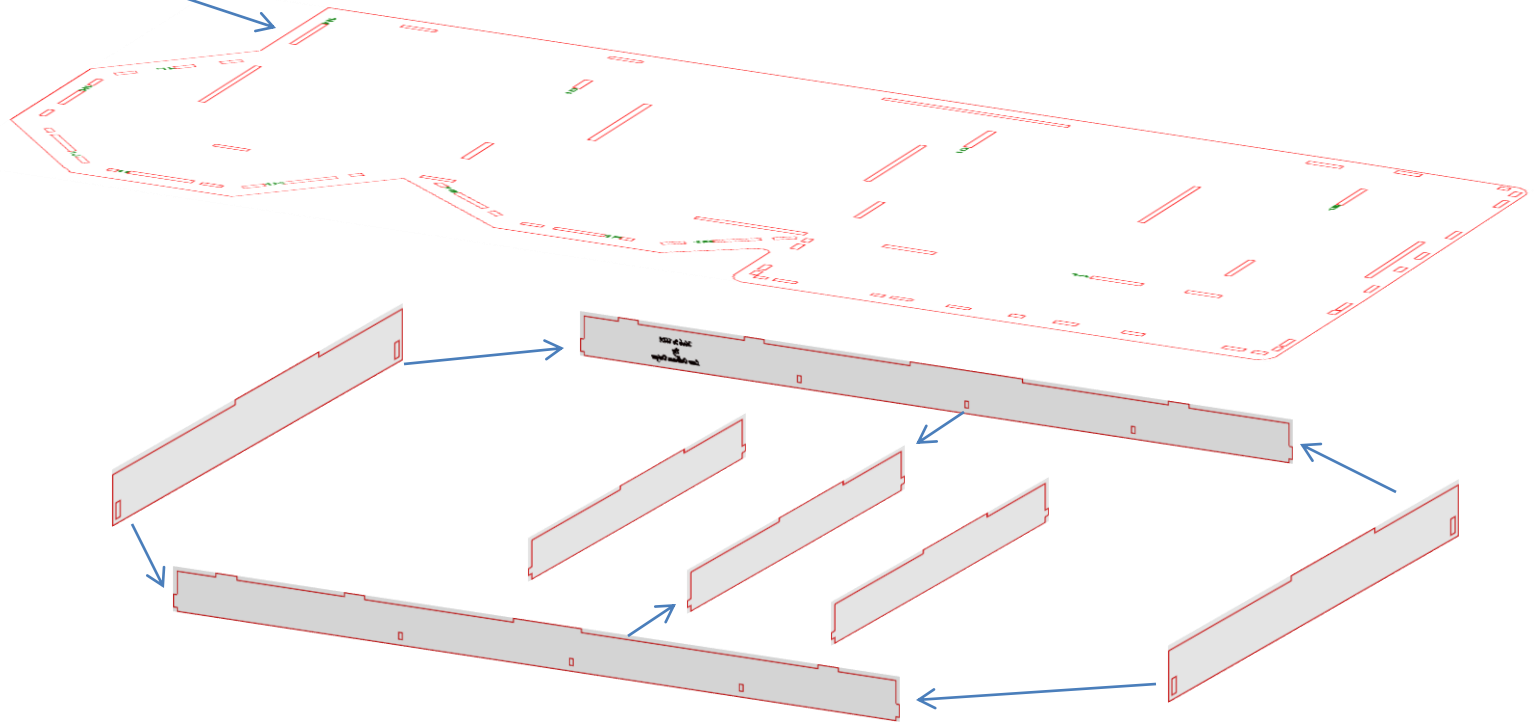


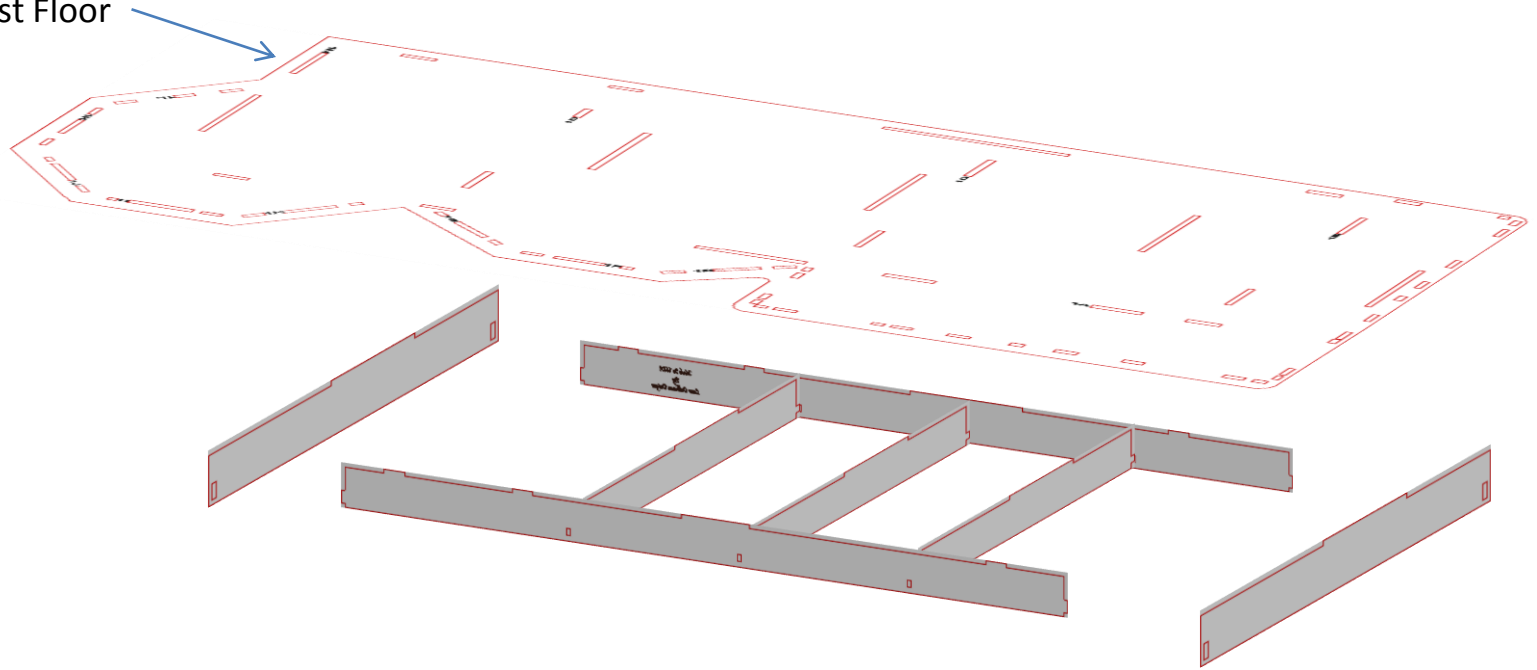
Gothic Leon Victorian assembly instructions  
By  
Laser Dollhouse Designs



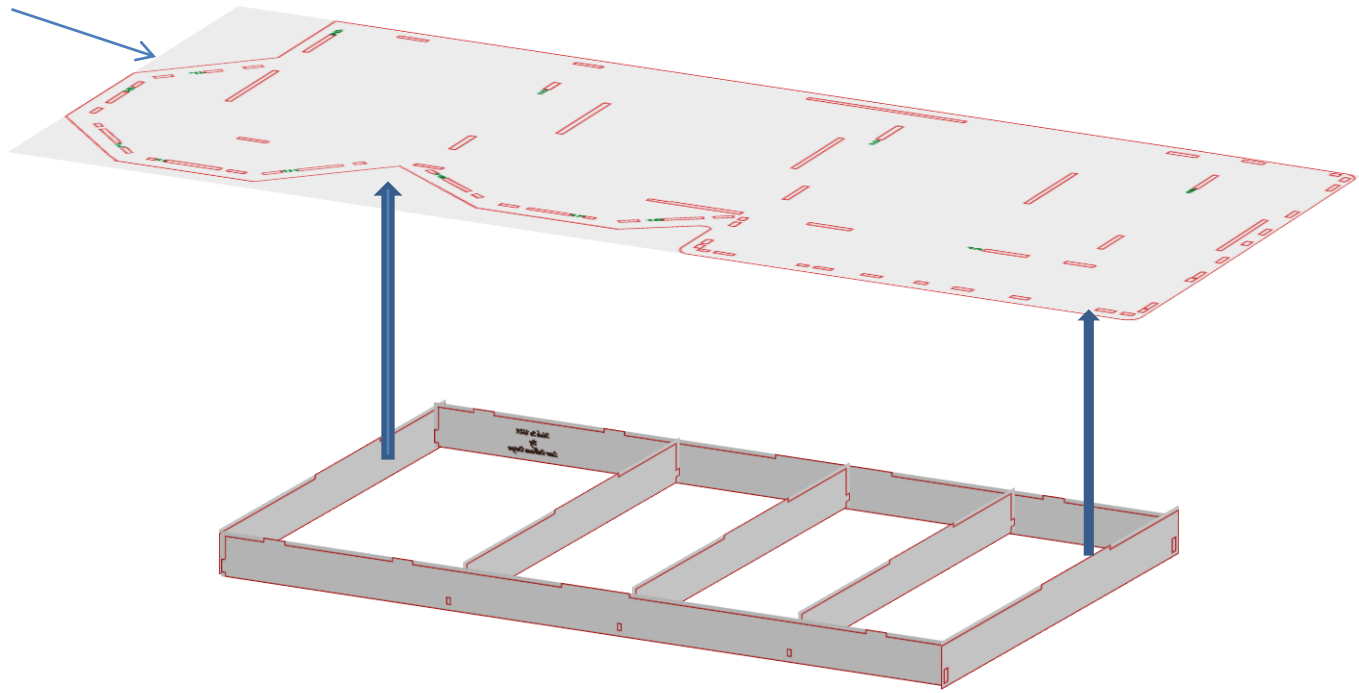
First Floor

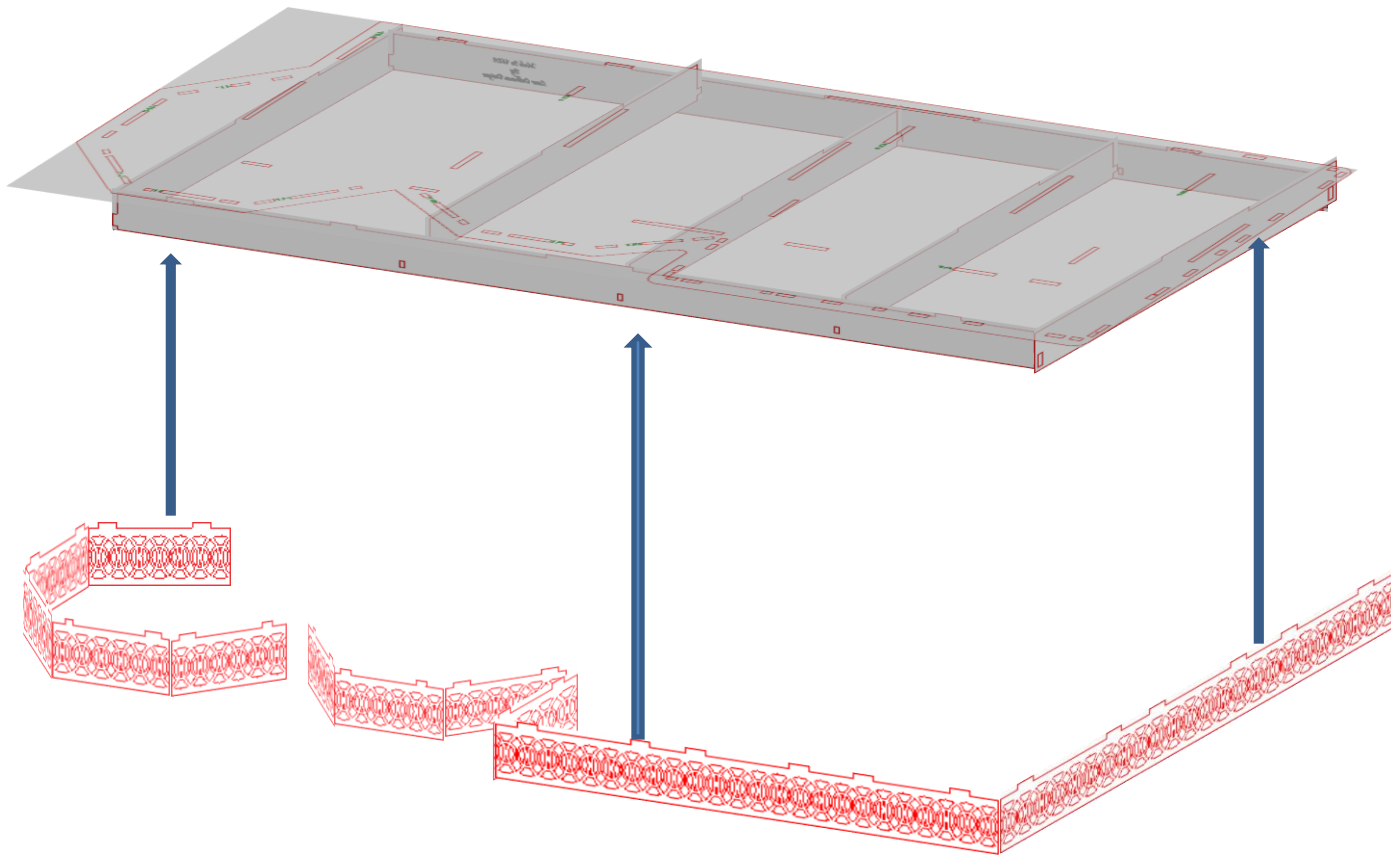


First Floor

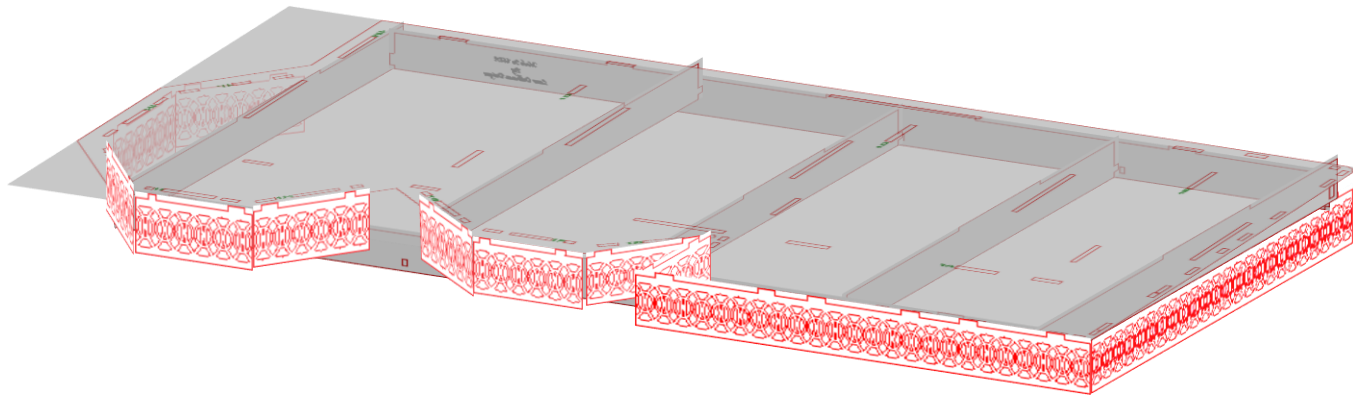


First Floor

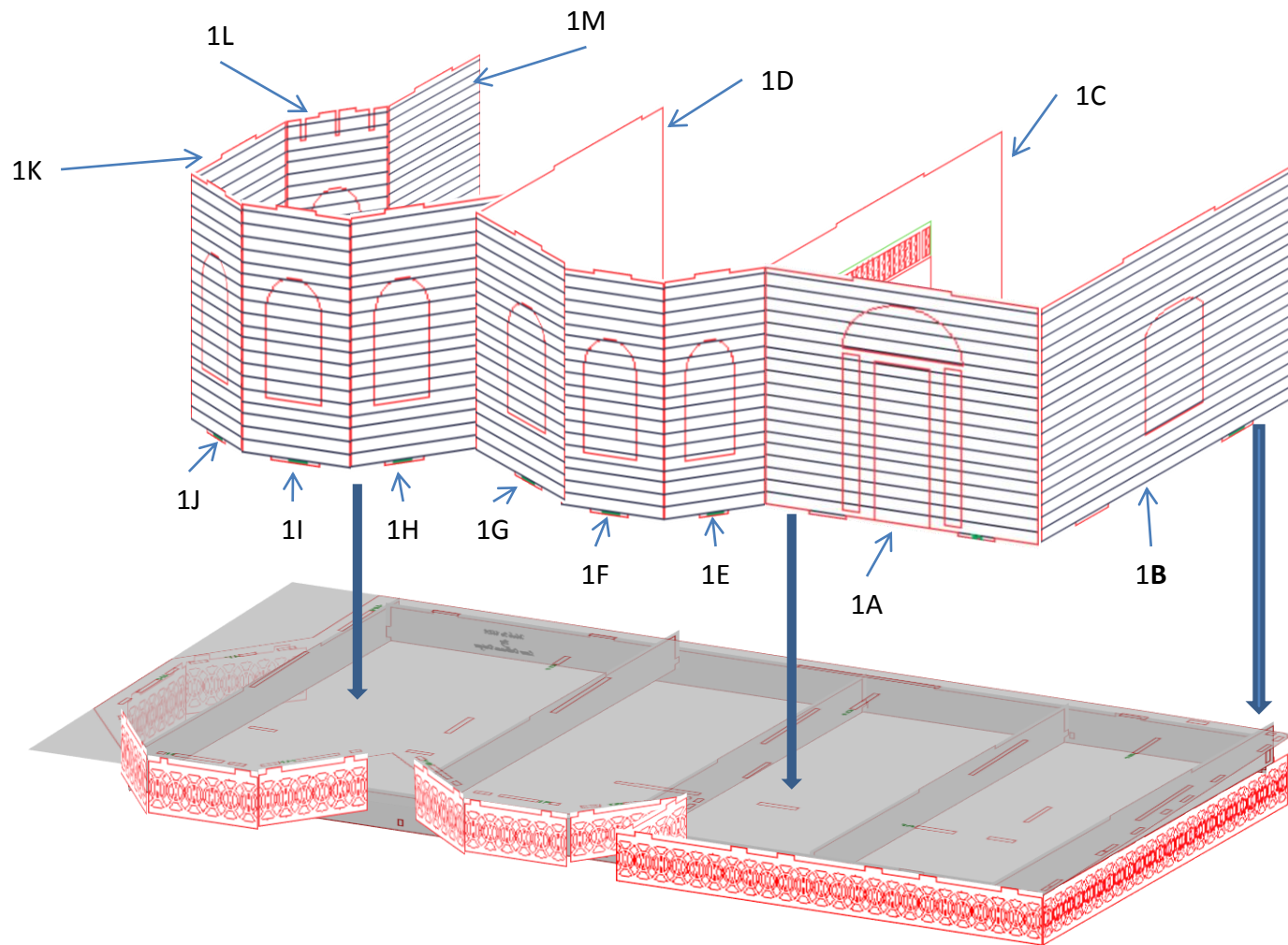


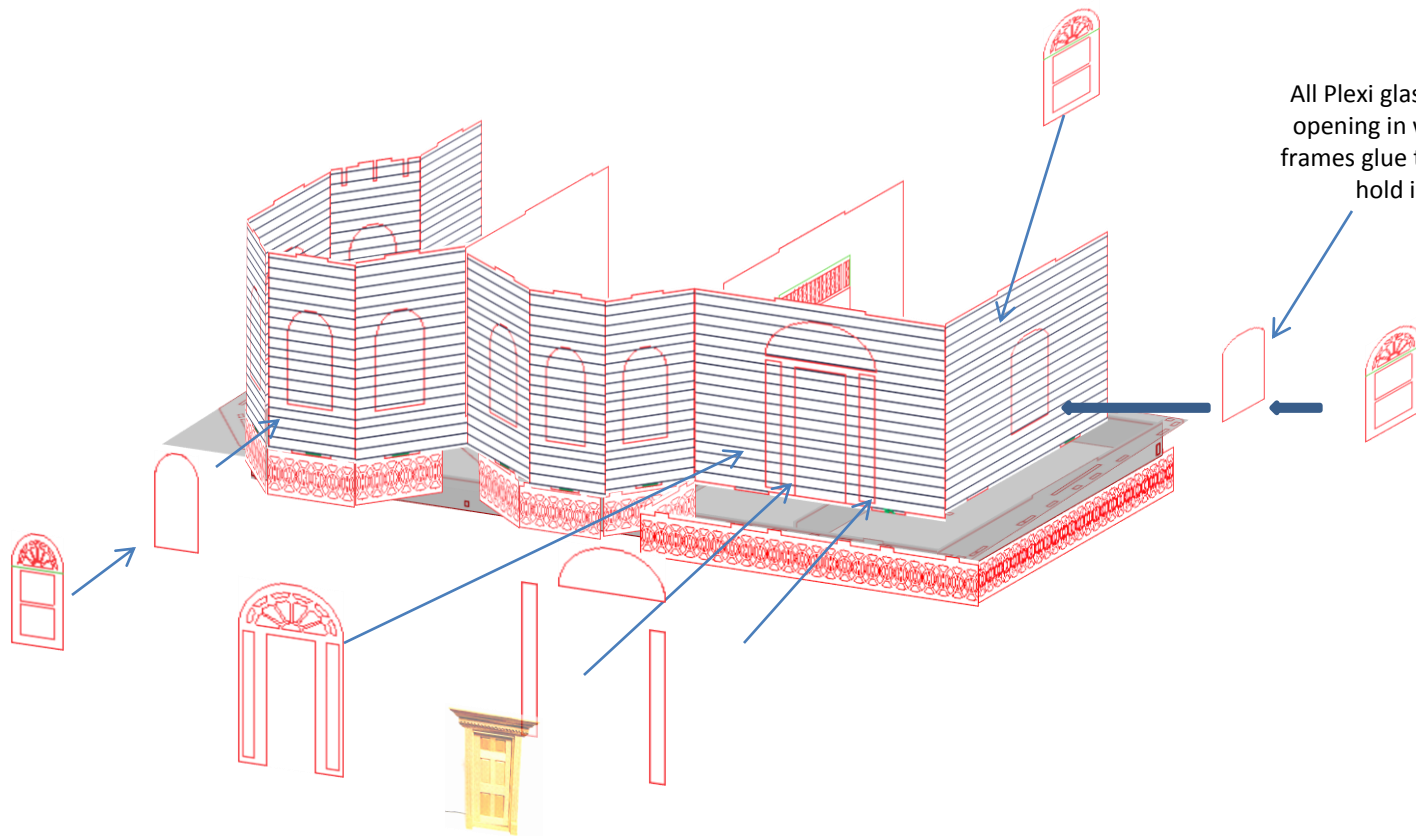


The base skirt will only fit easy into one area. Do not force,  
double check correct fit.



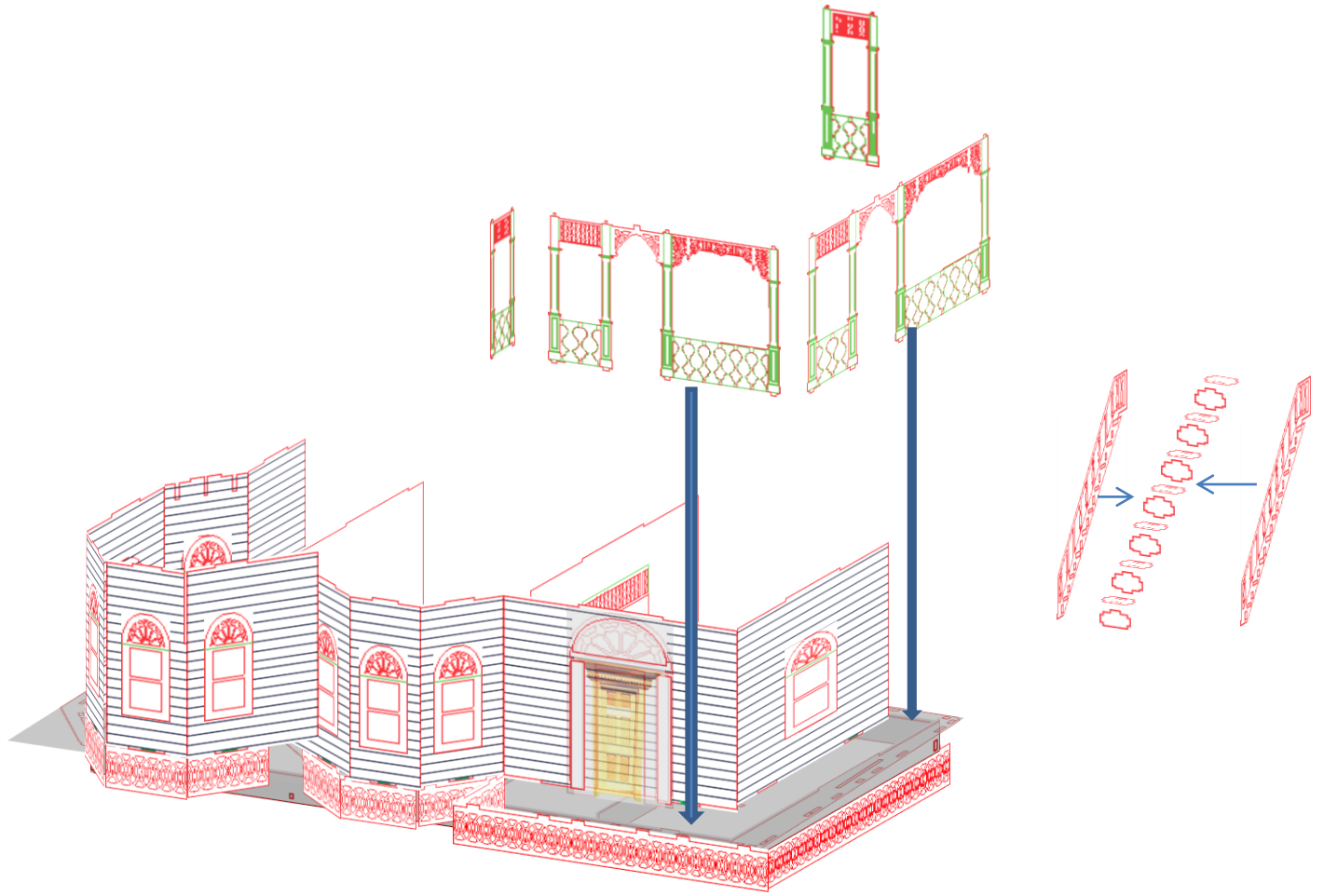
Base complete. We will now work on the 1<sup>st</sup> Floor walls.



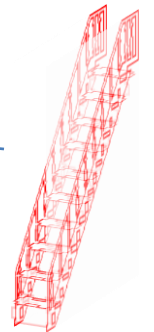
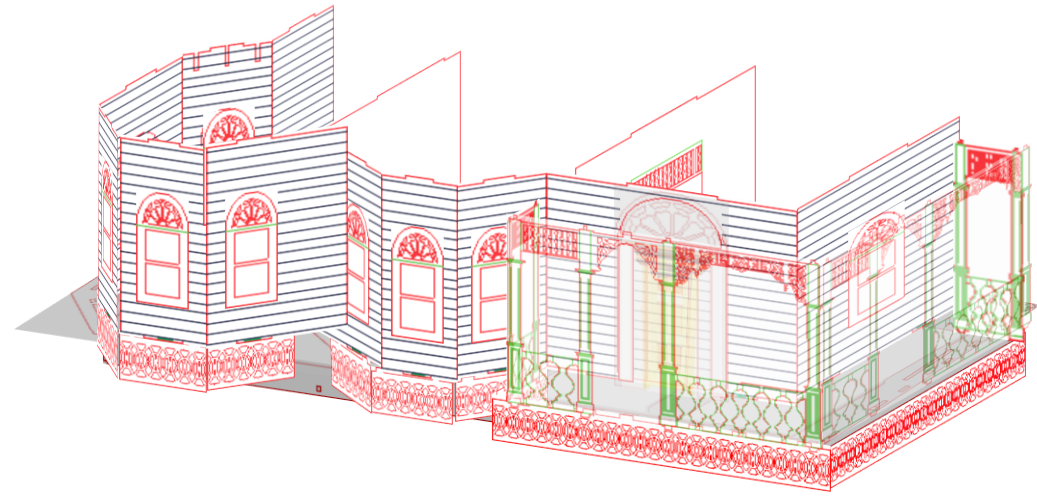
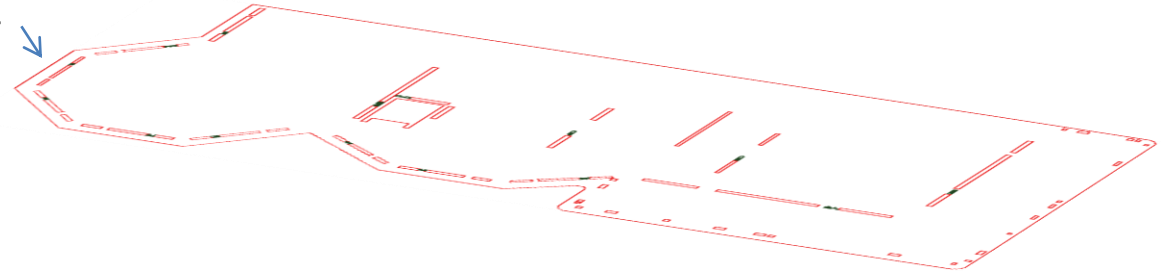


All Plexi glass goes inside opening in walls and the frames glue to the walls to hold in place

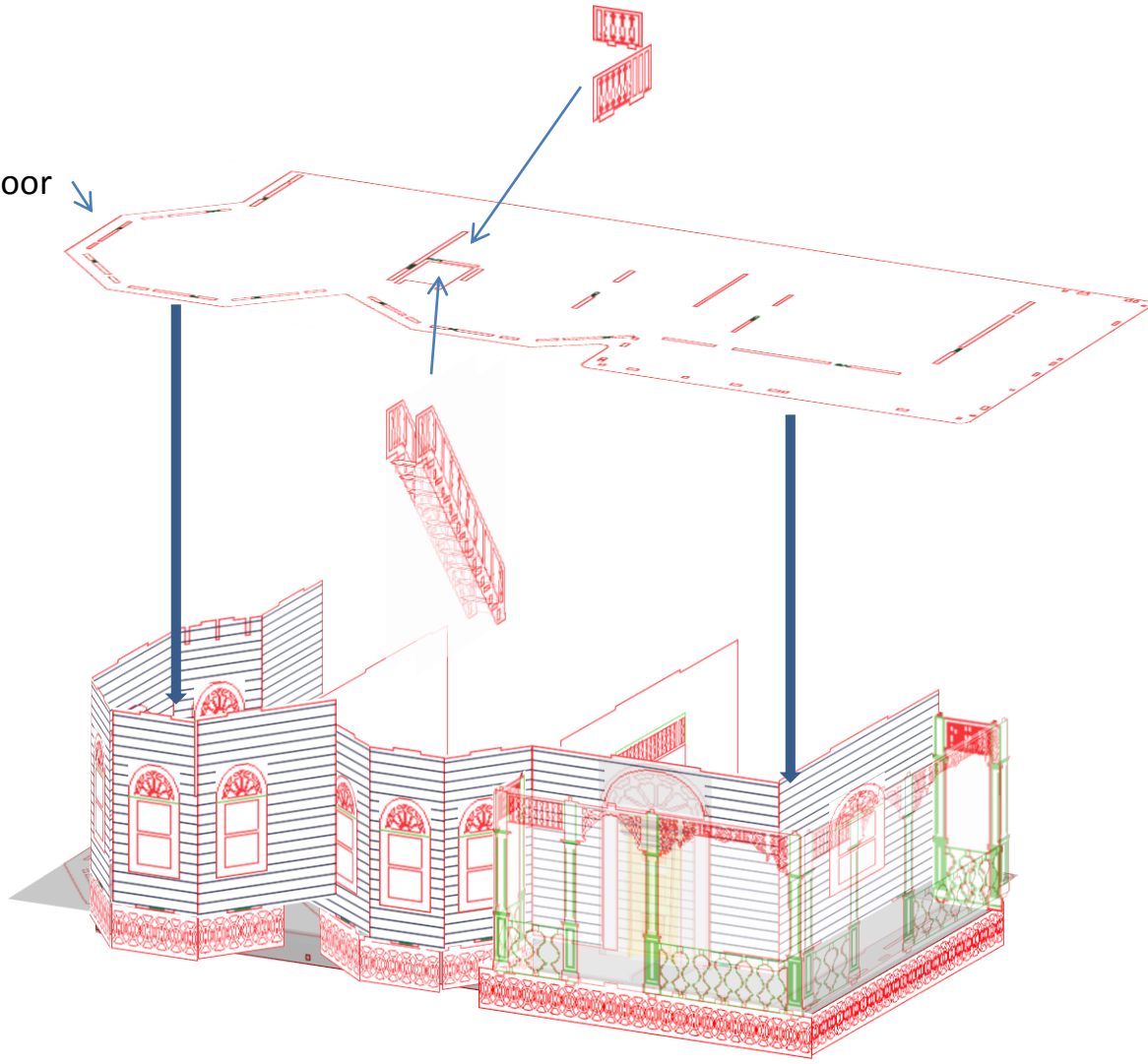


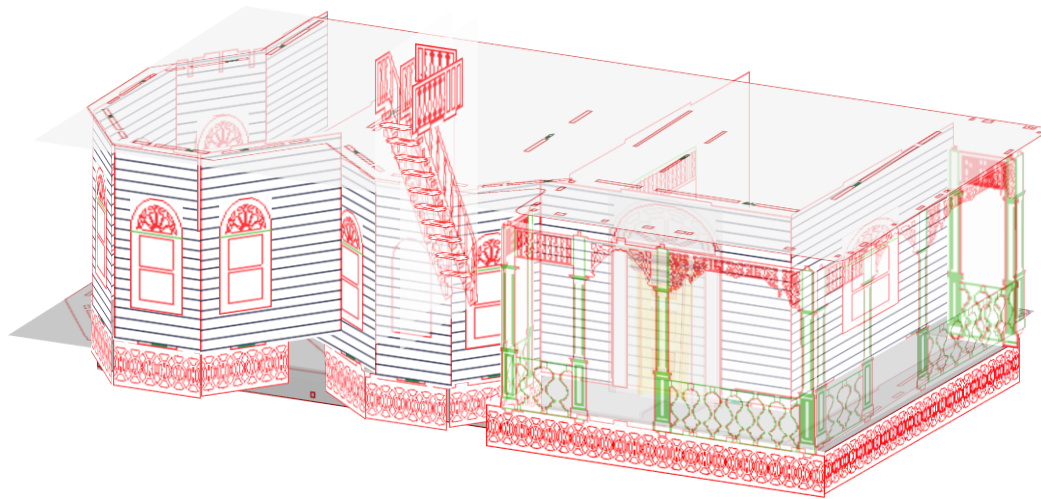


2<sup>nd</sup> Floor



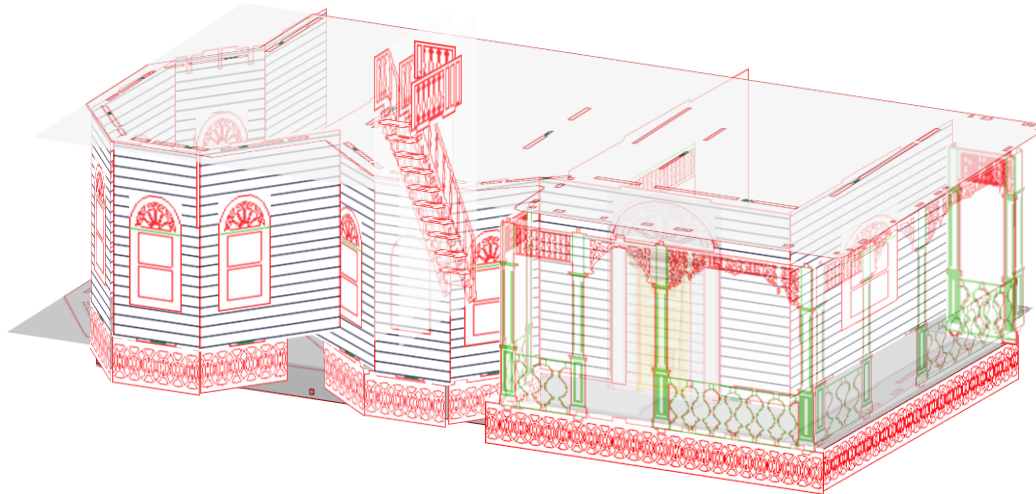
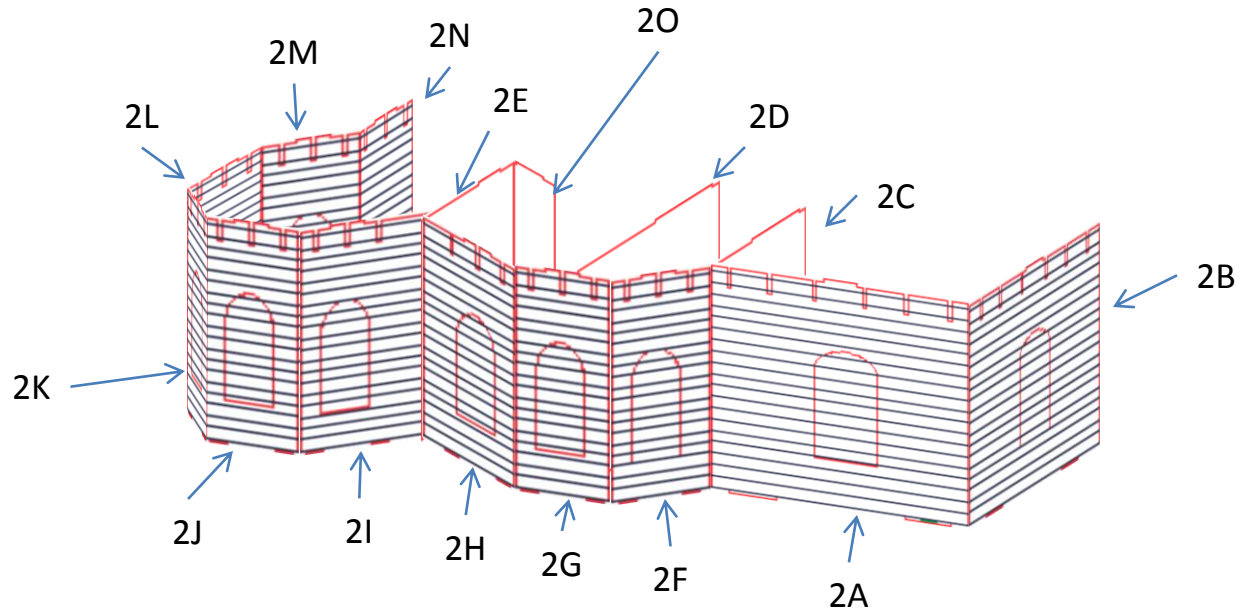
2<sup>nd</sup> Floor

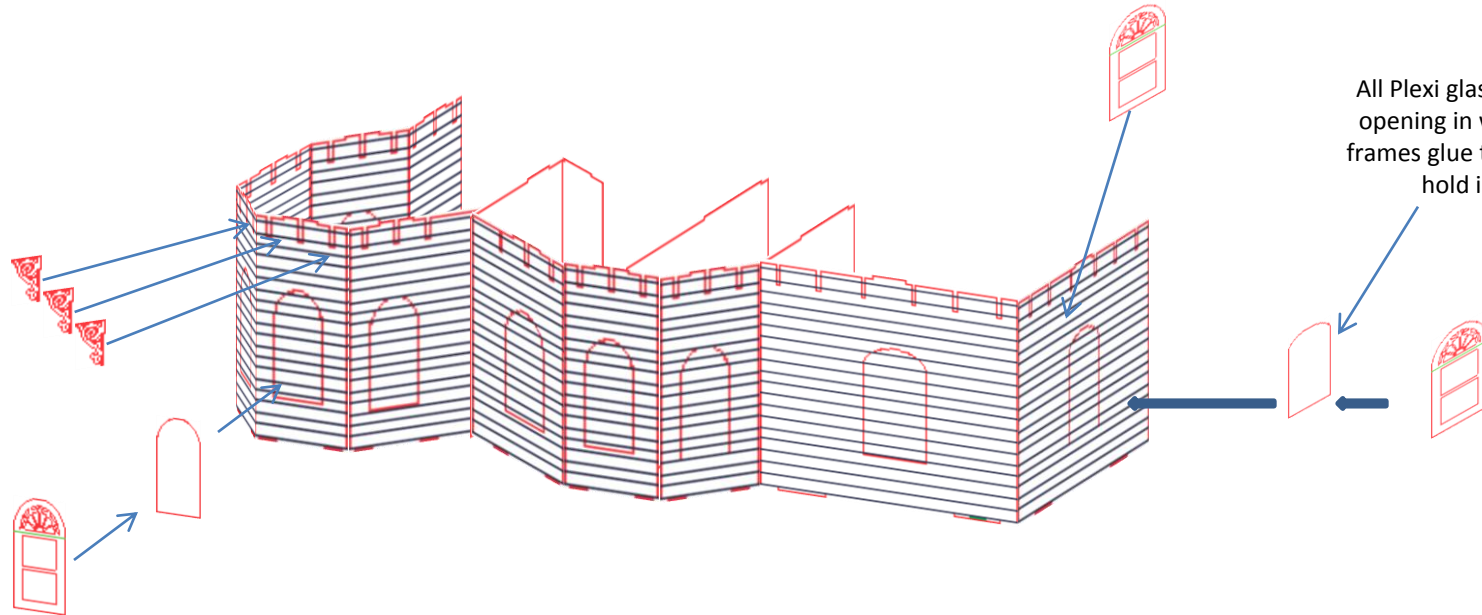




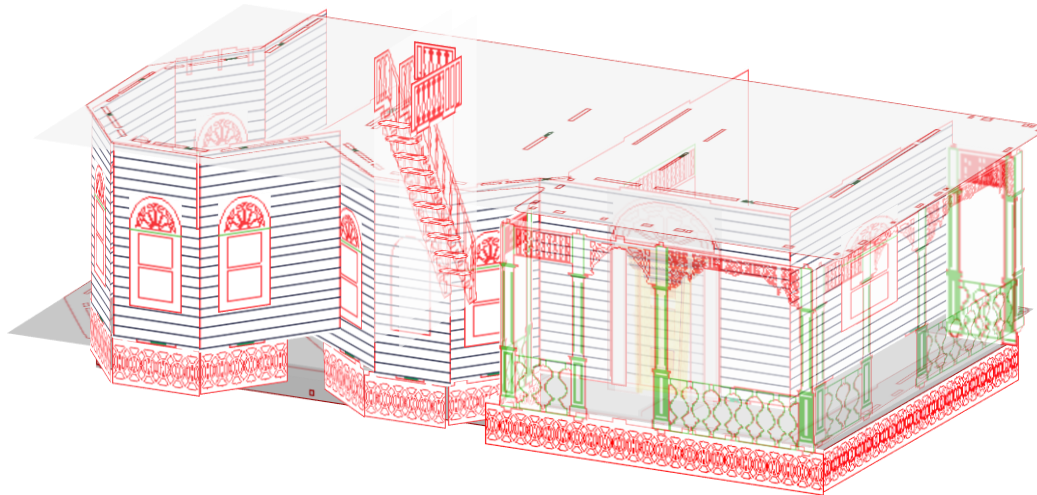
First floor complete, that was not bad at all..... Let's start the next floor walls..

Note: 2O only used in the 1:12 scale house.  
For the 1:24 and 1:48 there is a stair rail

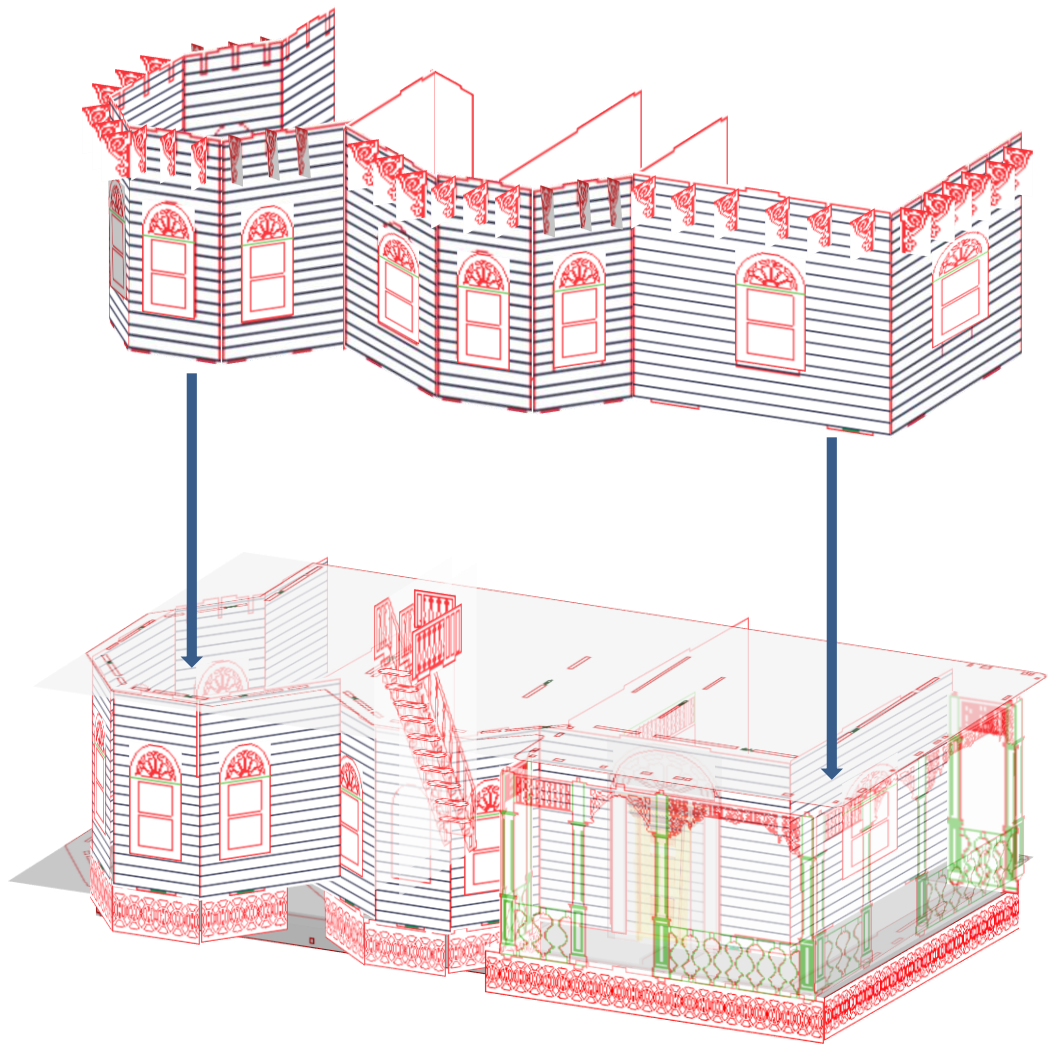


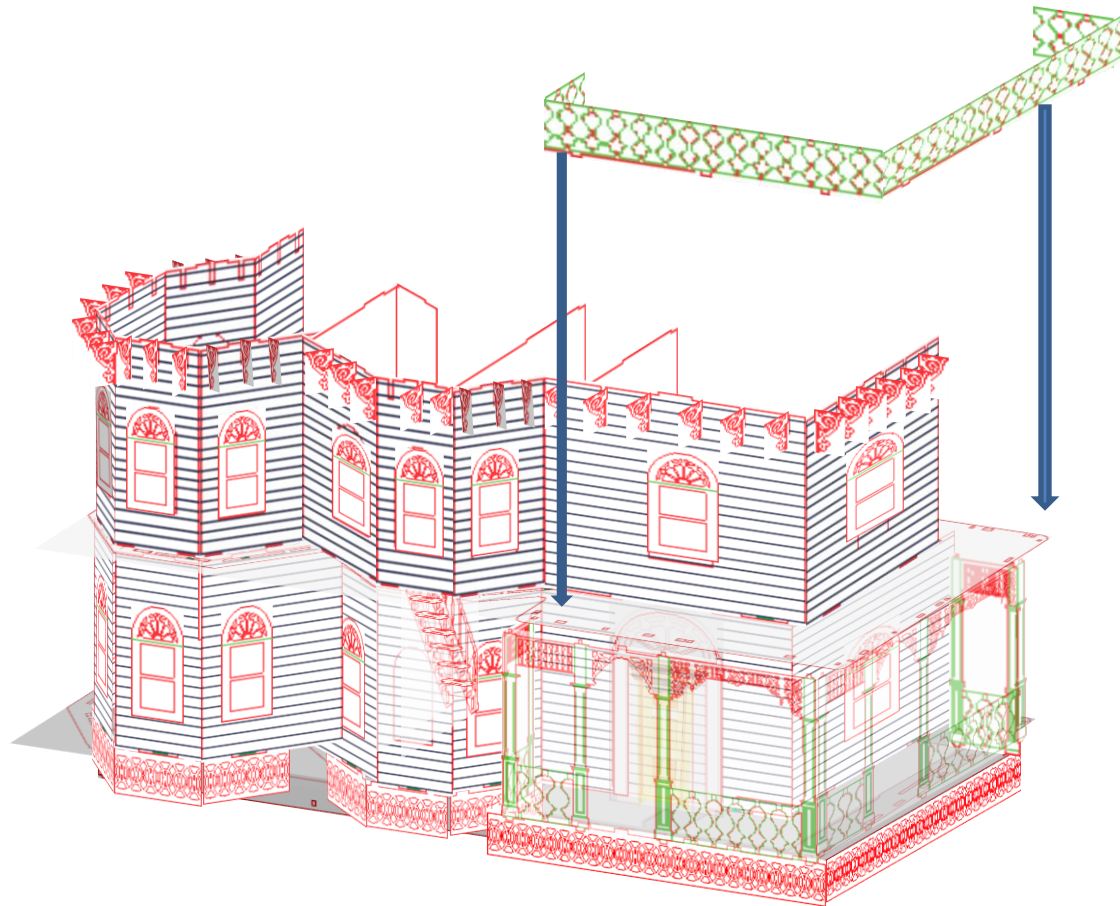


All Plexi glass goes inside opening in walls and the frames glue to the walls to hold in place

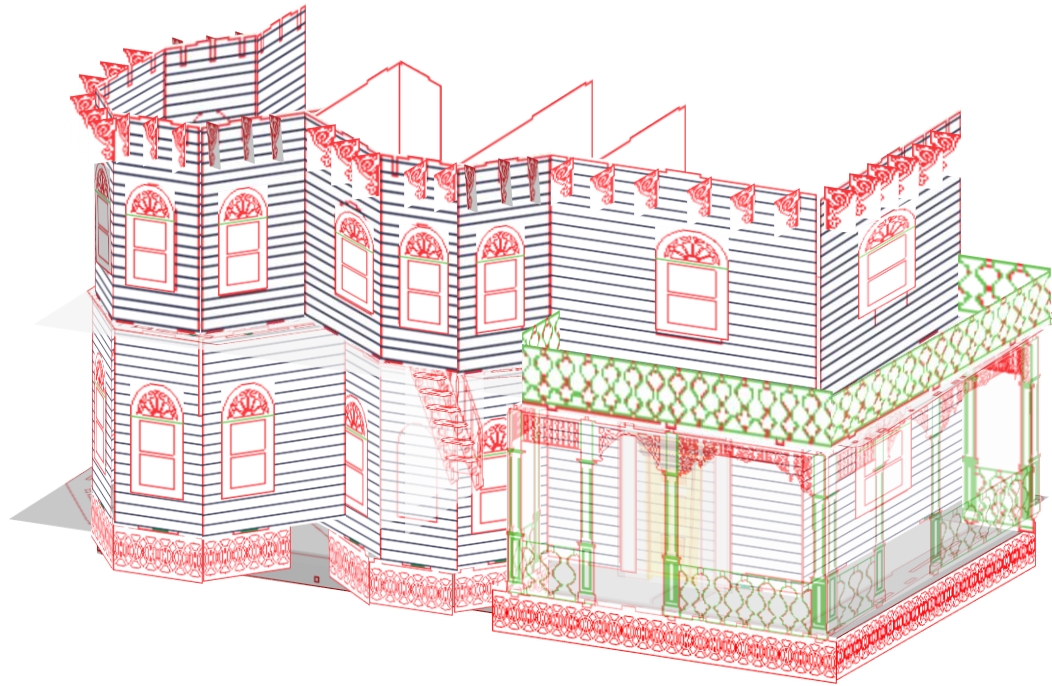






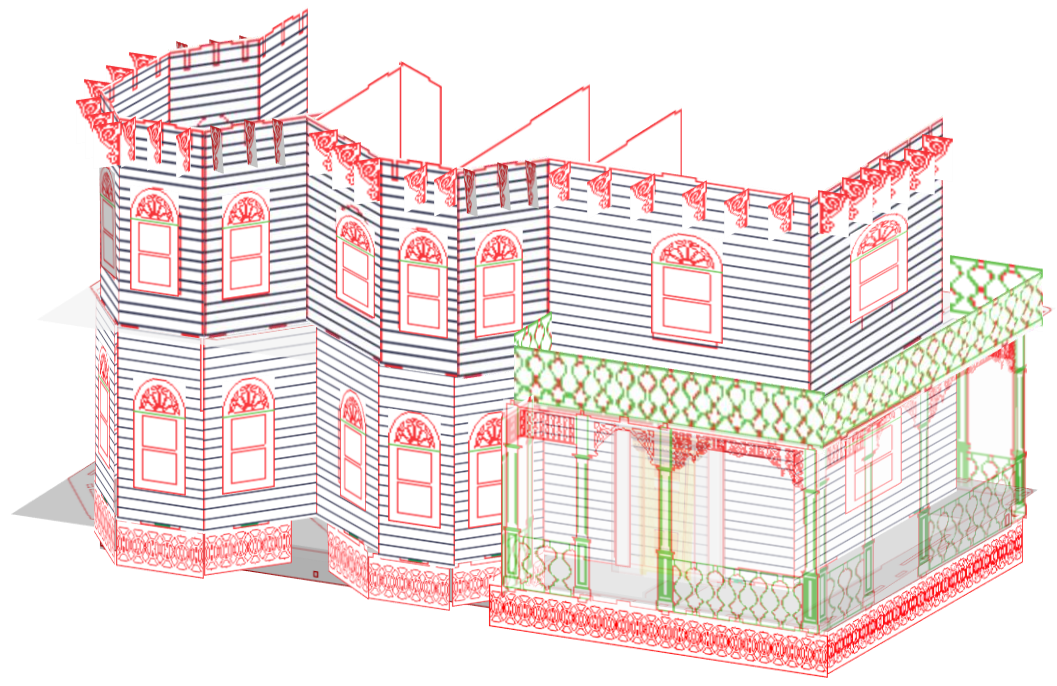
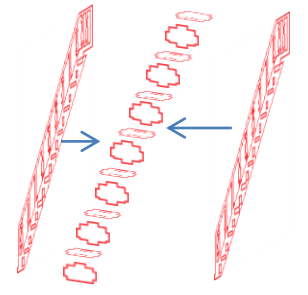
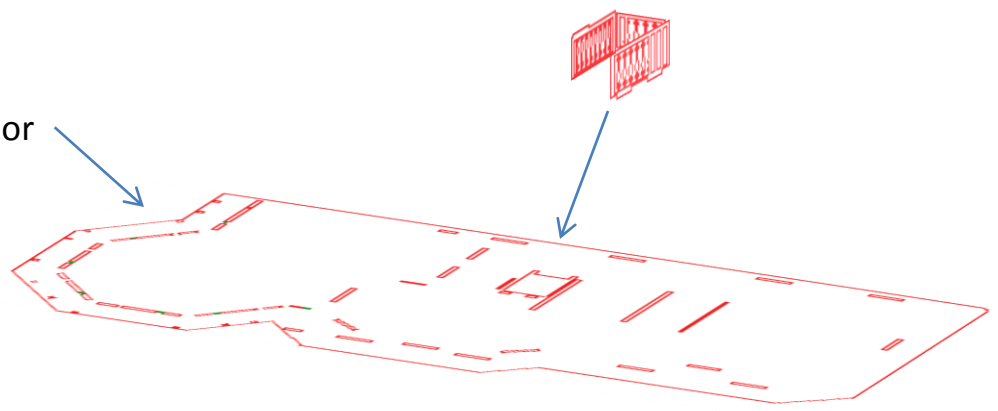


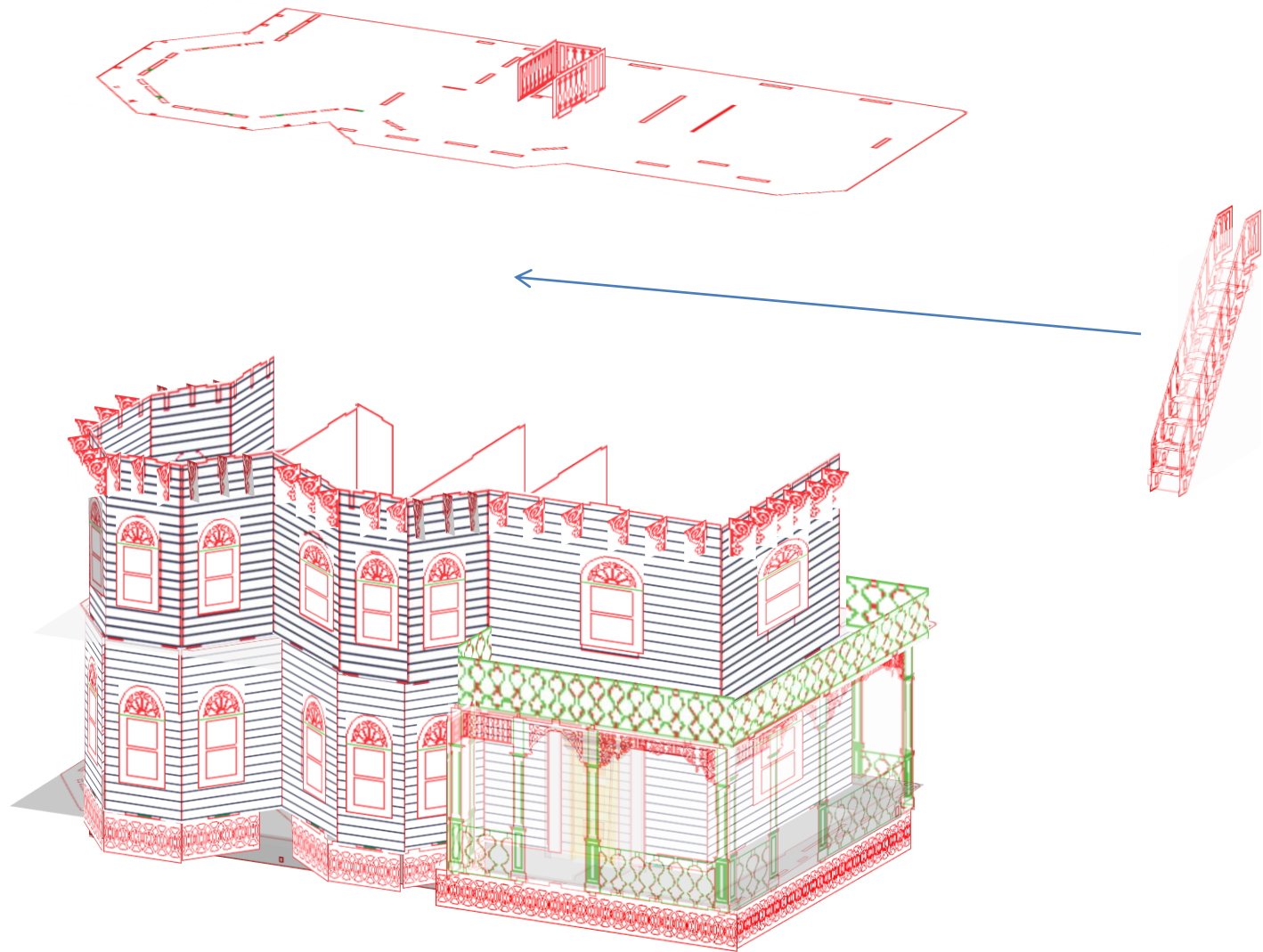


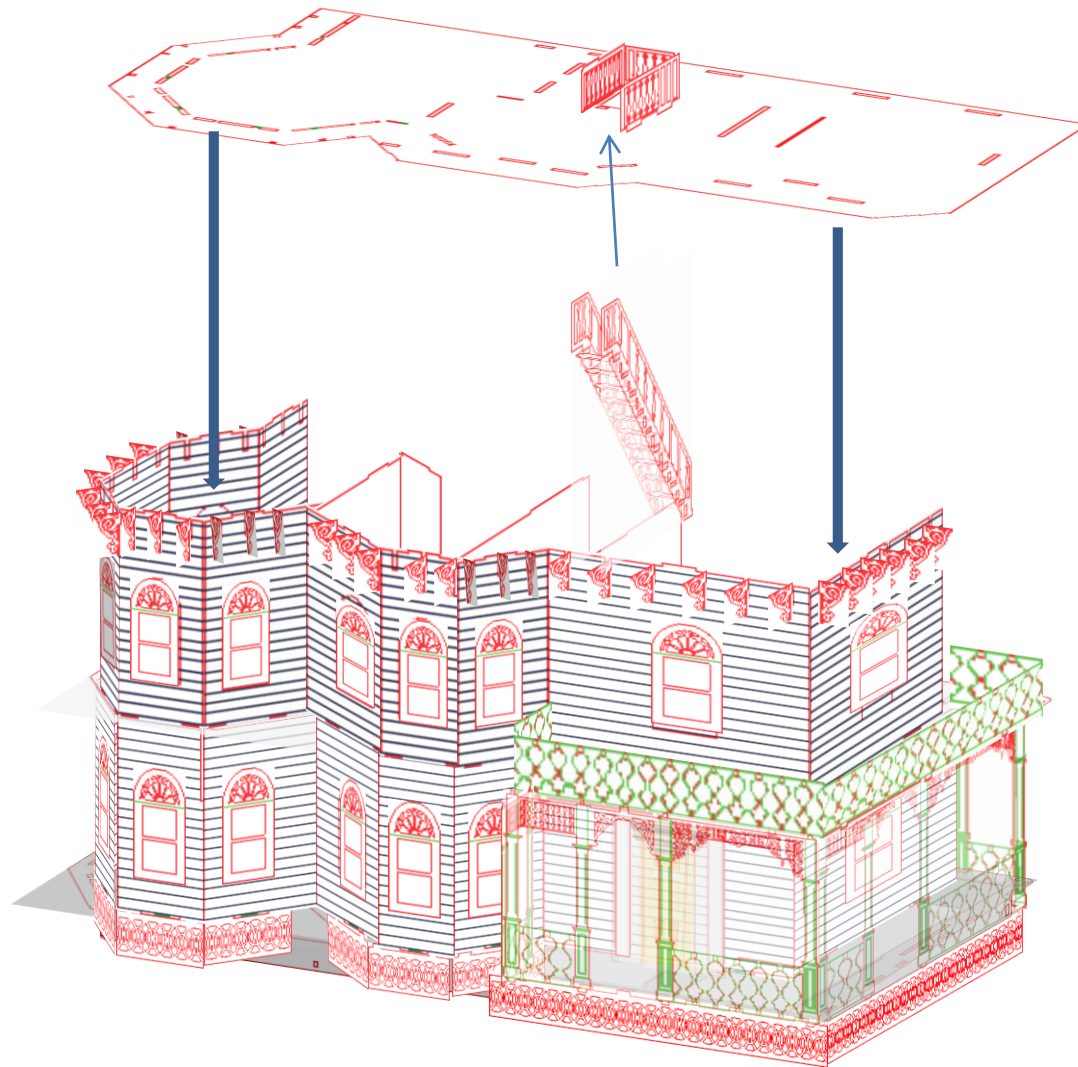


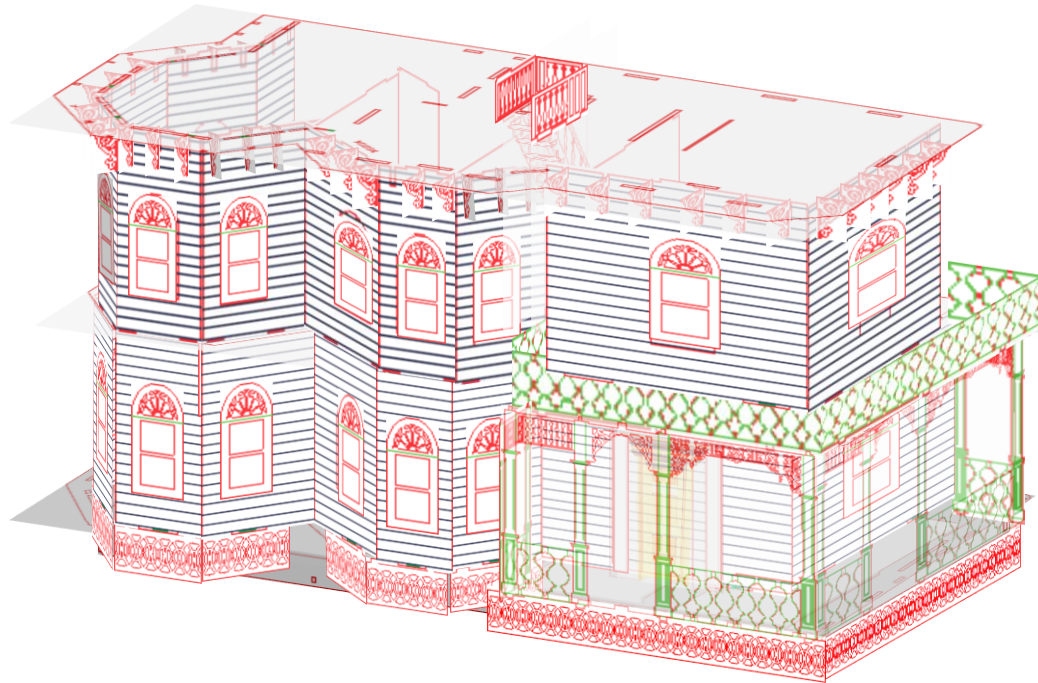
Ok 2<sup>ND</sup> Floor complete. On to the 3<sup>rd</sup>.

3<sup>rd</sup> Floor



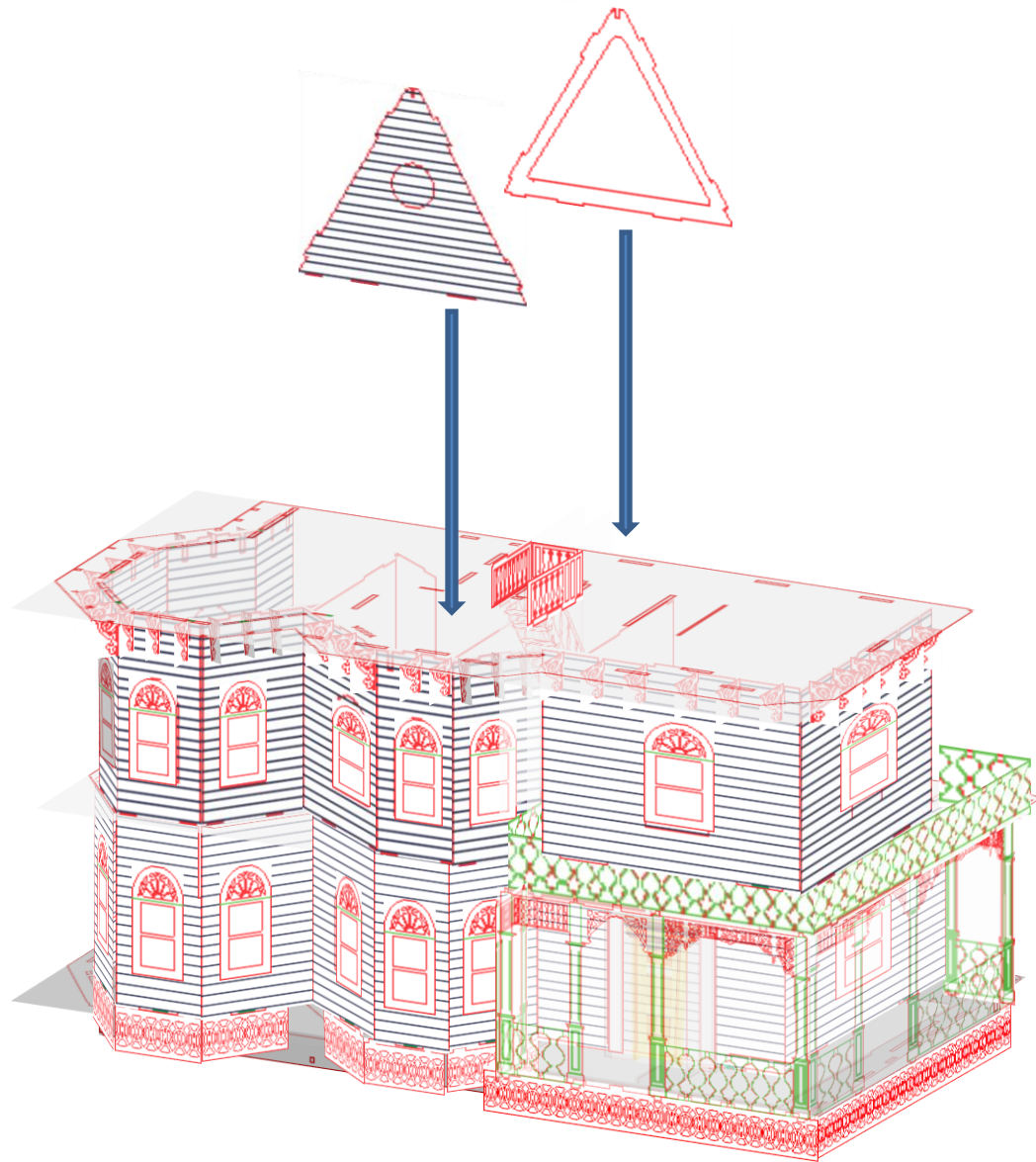


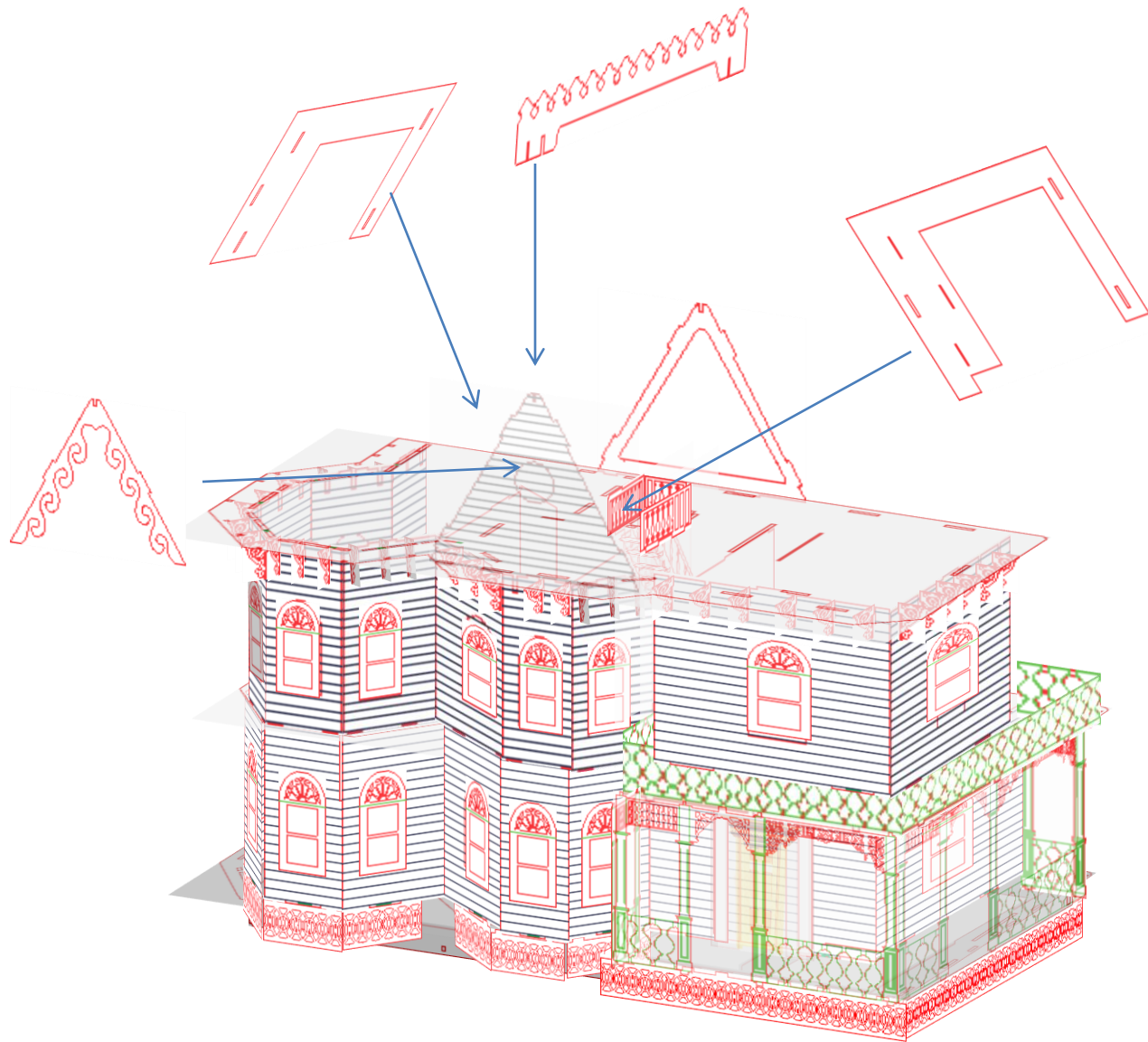


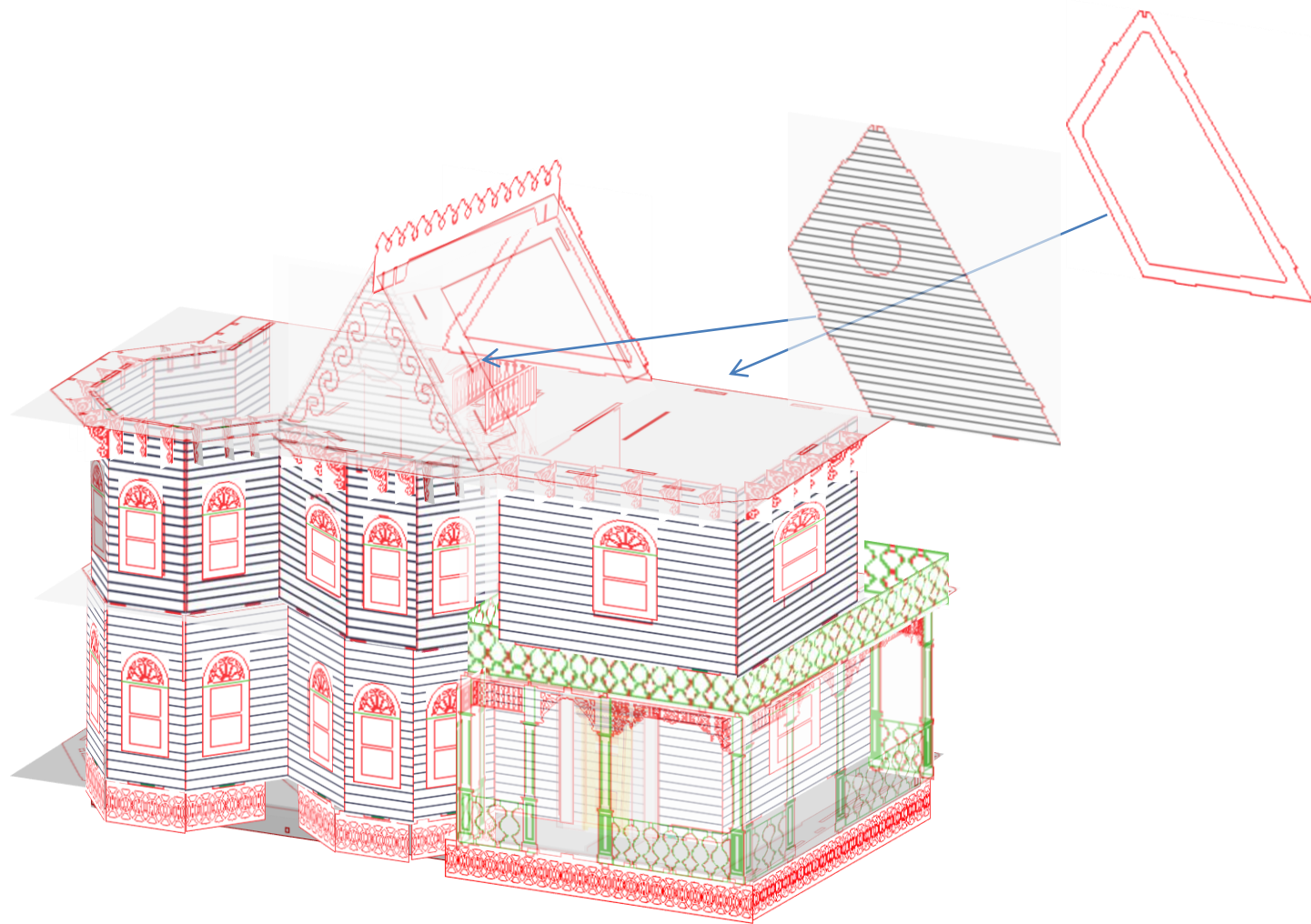


On to the 3<sup>rd</sup> floor we go.

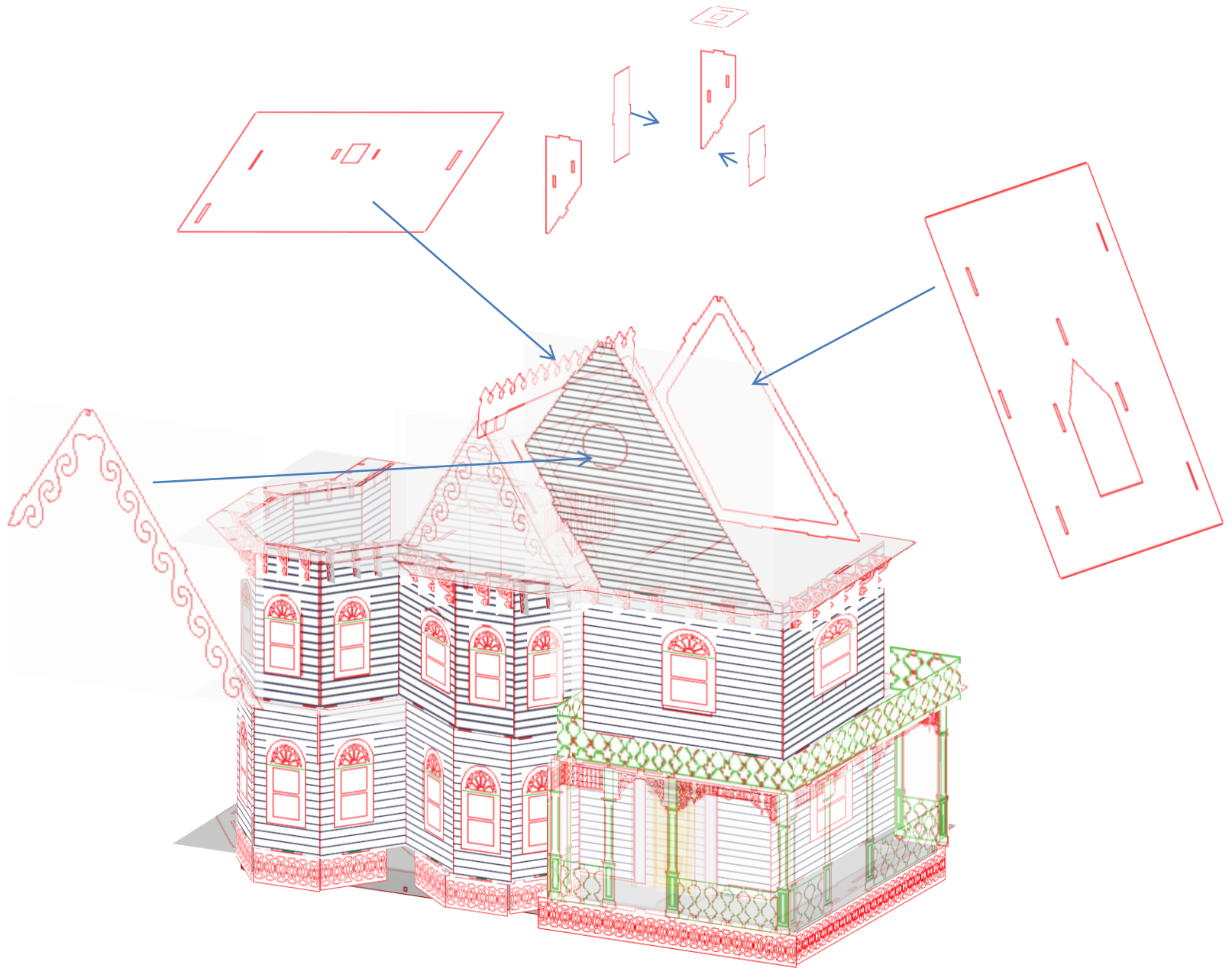


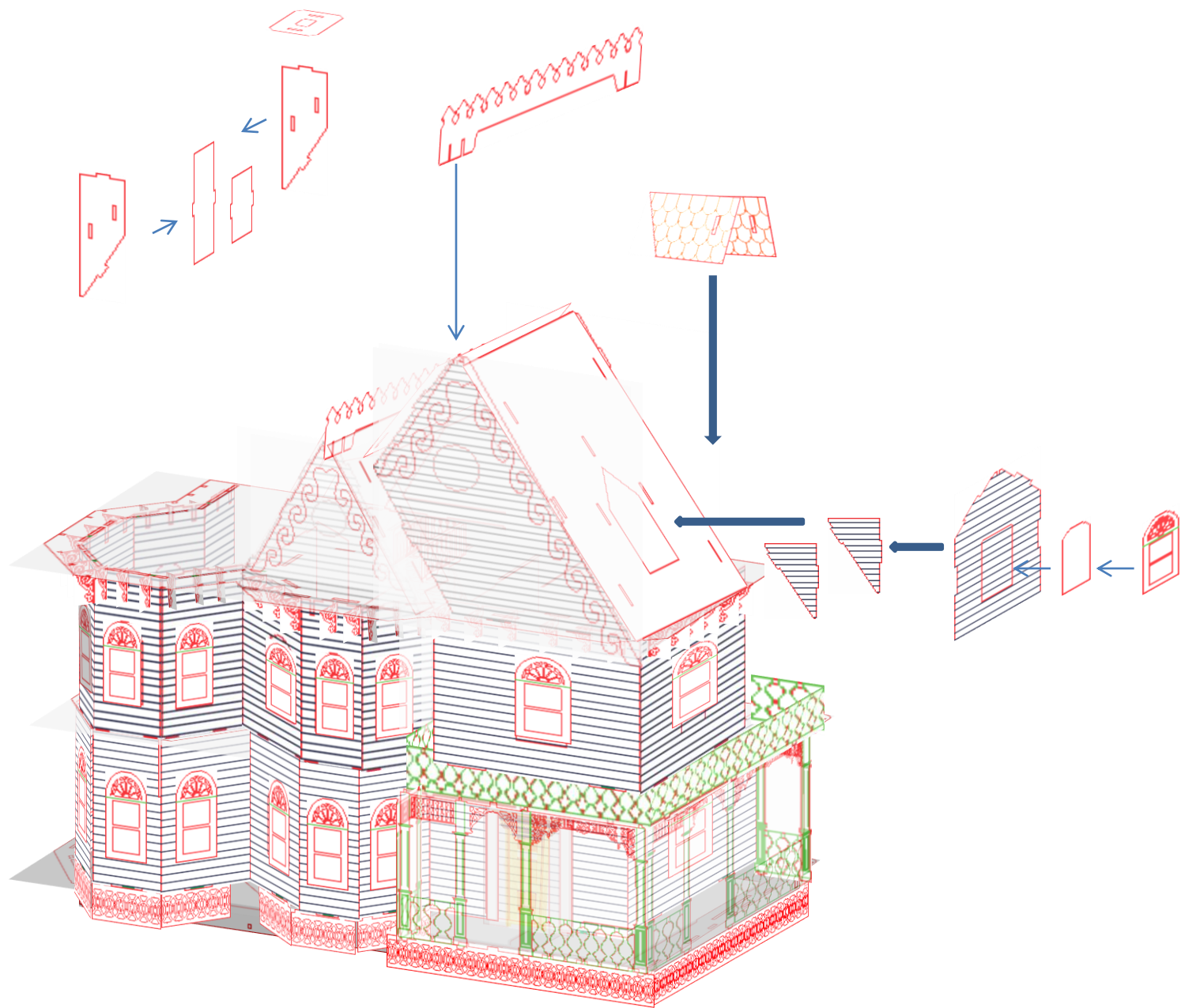


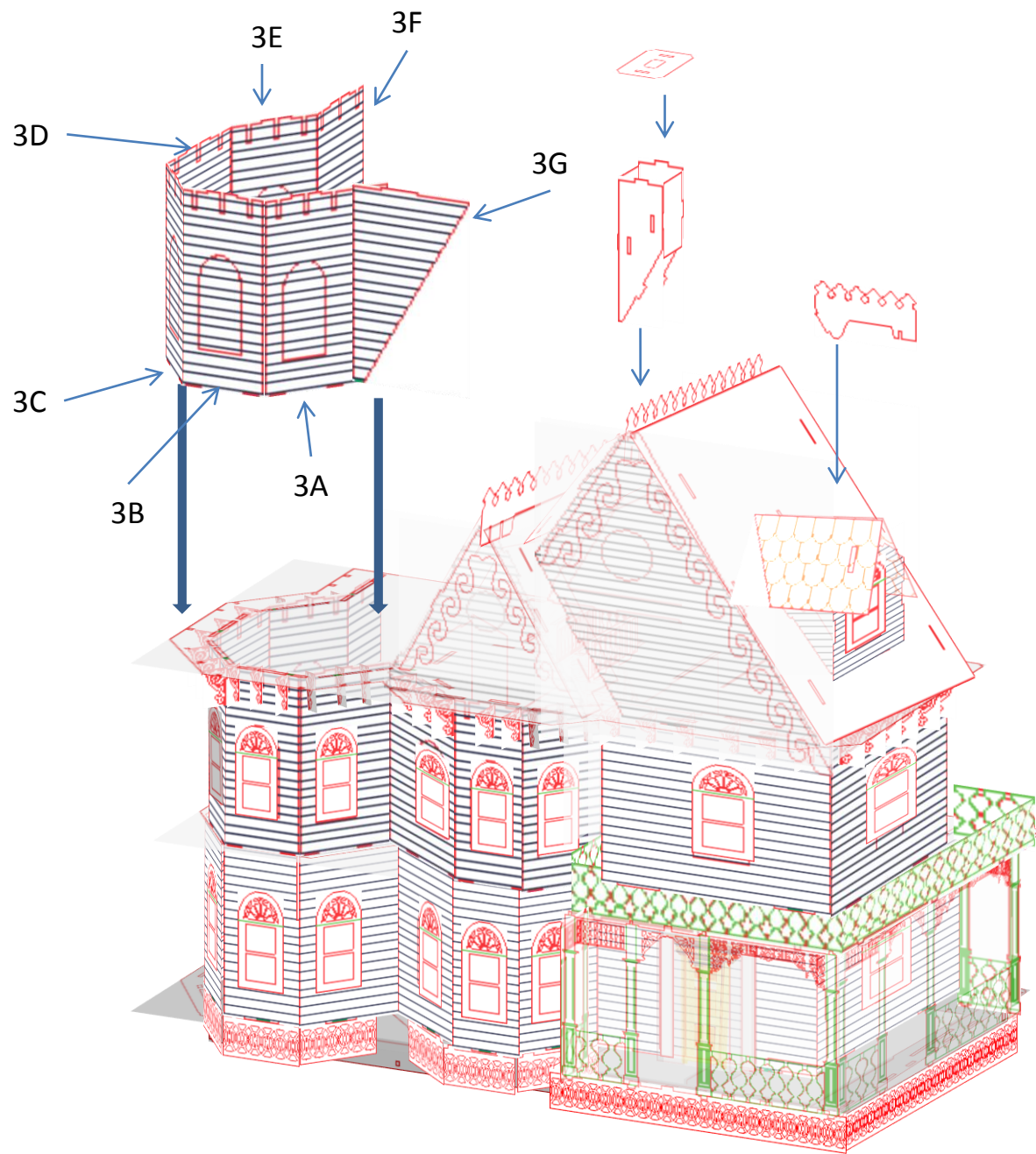


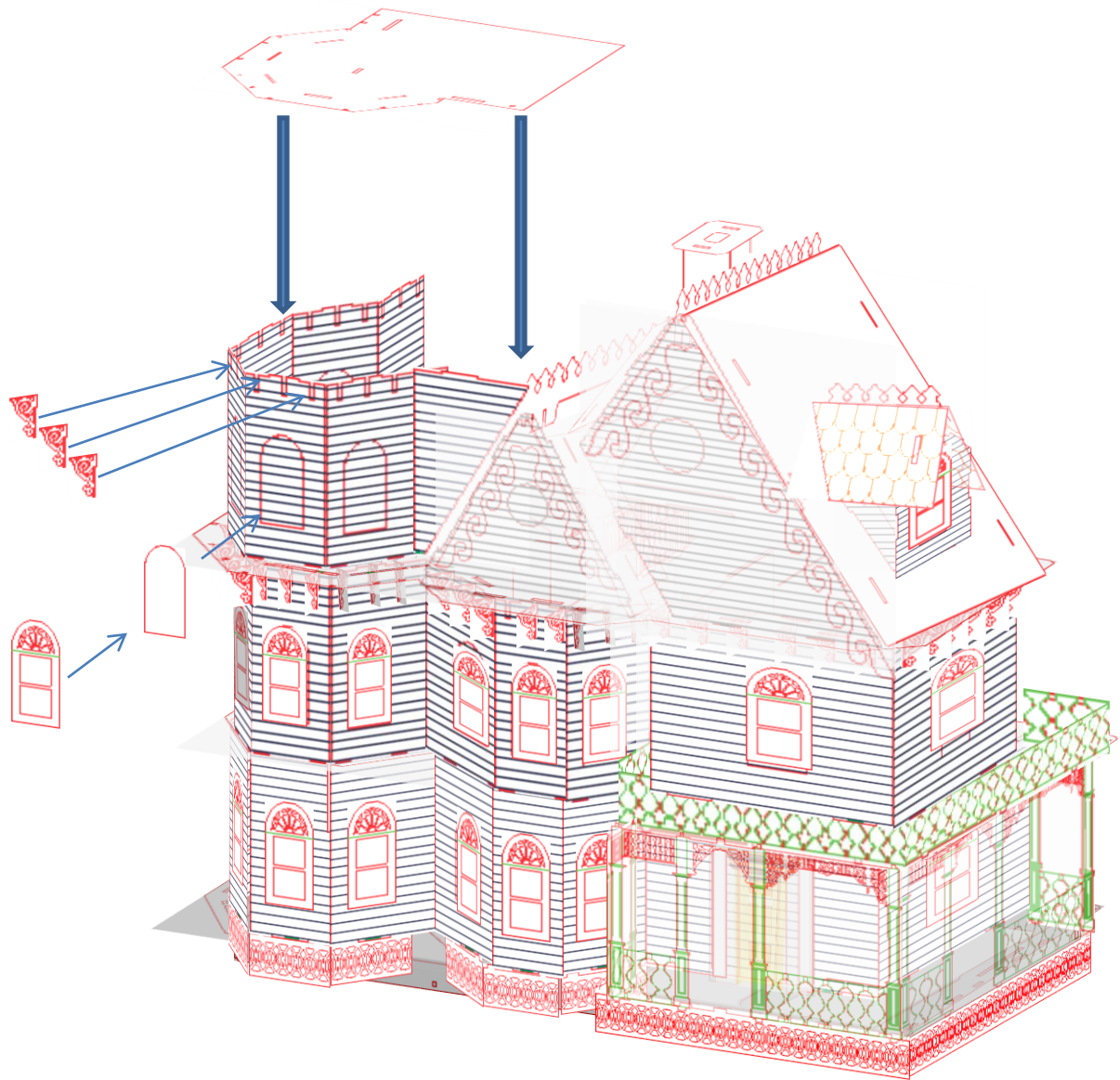




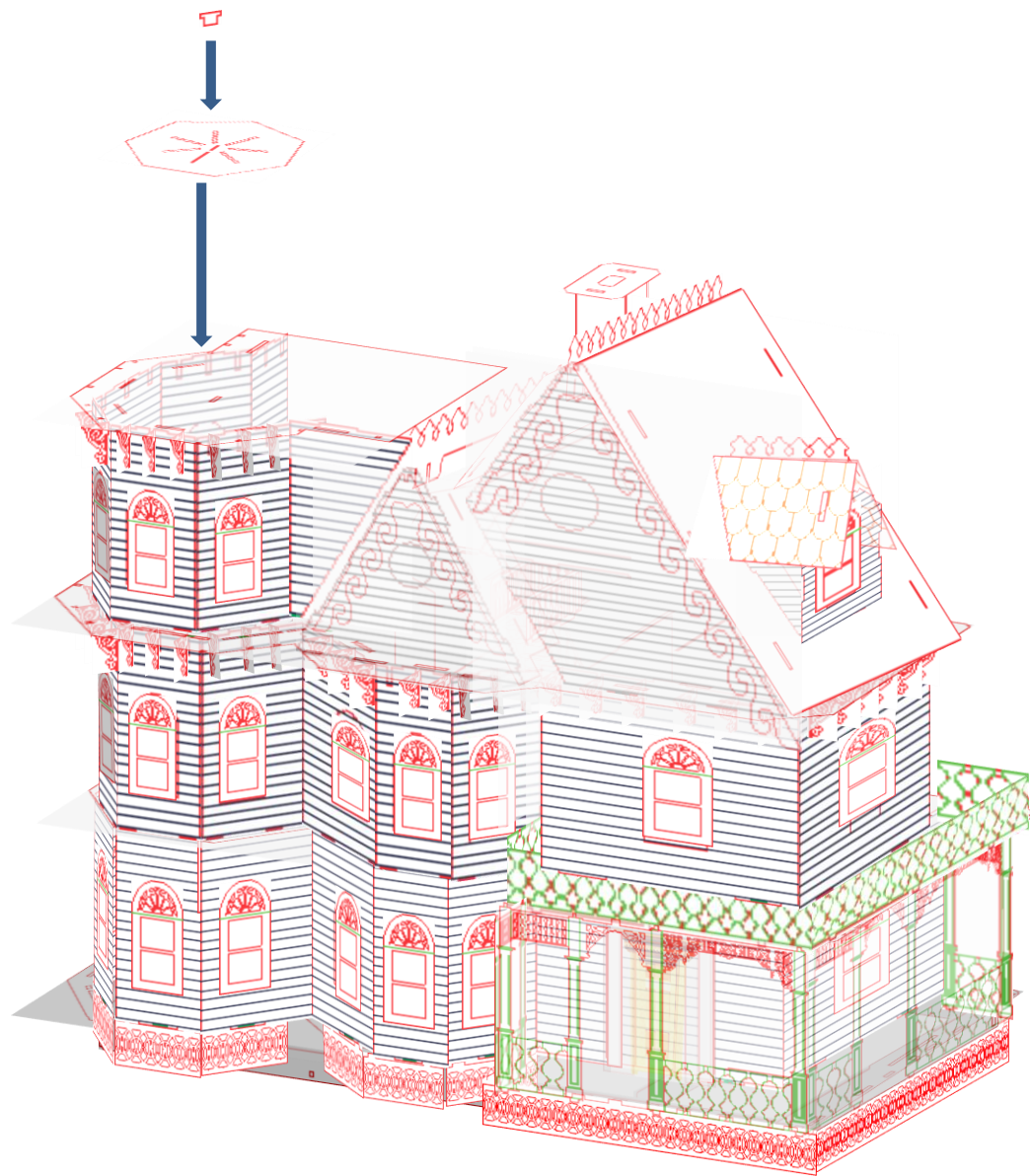


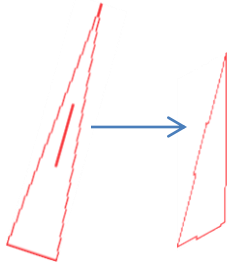




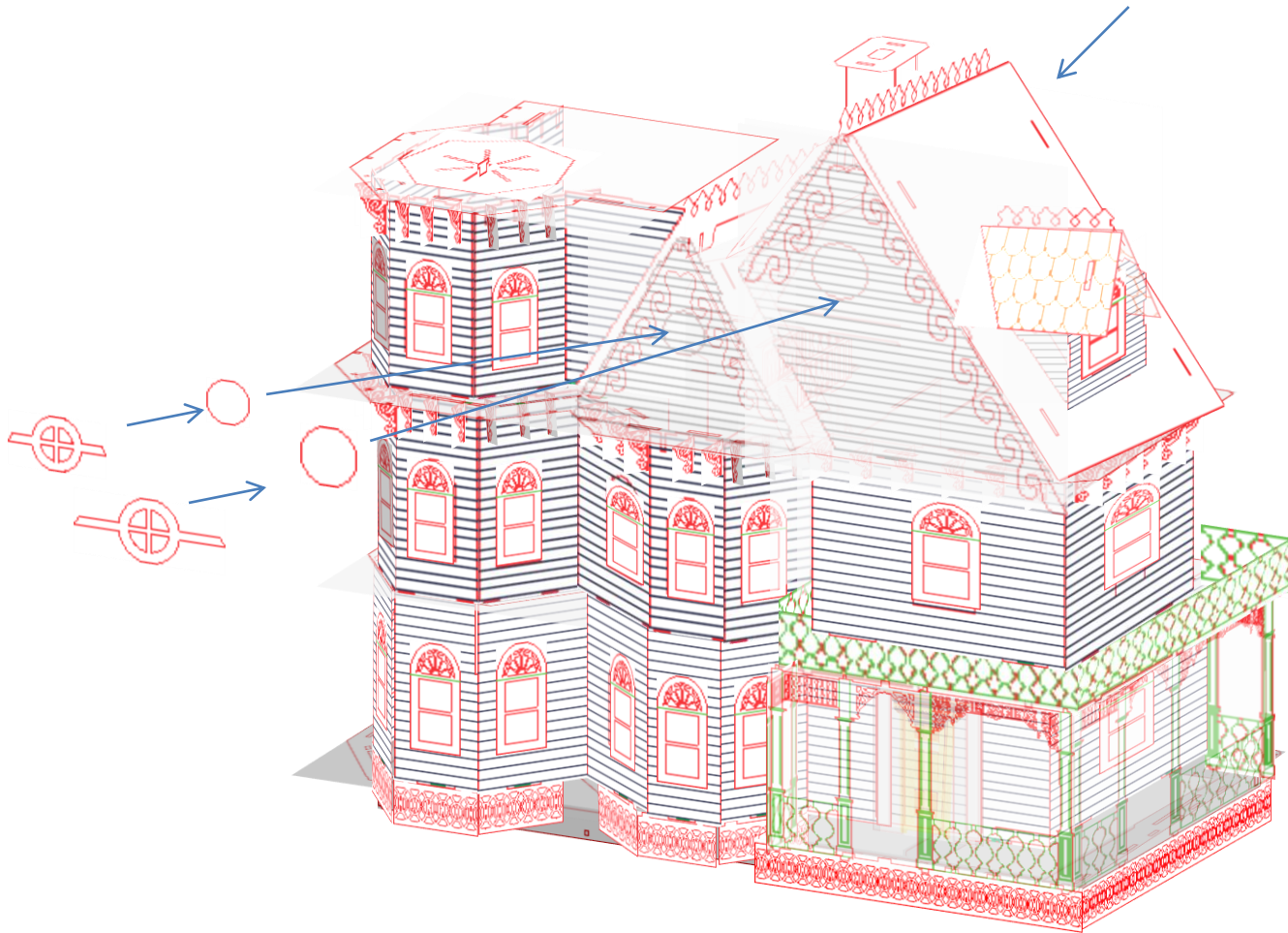
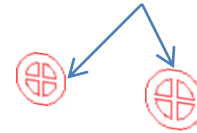




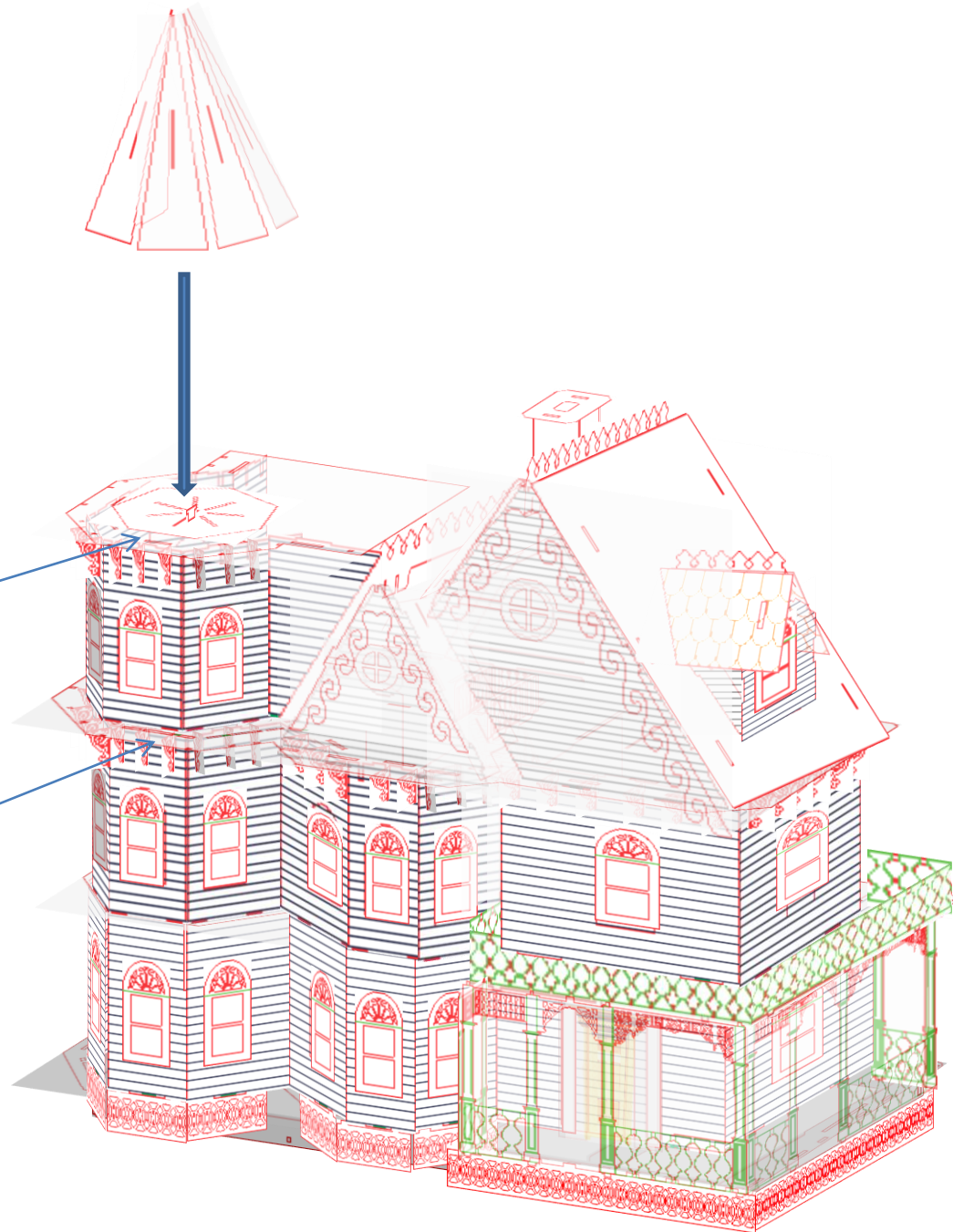




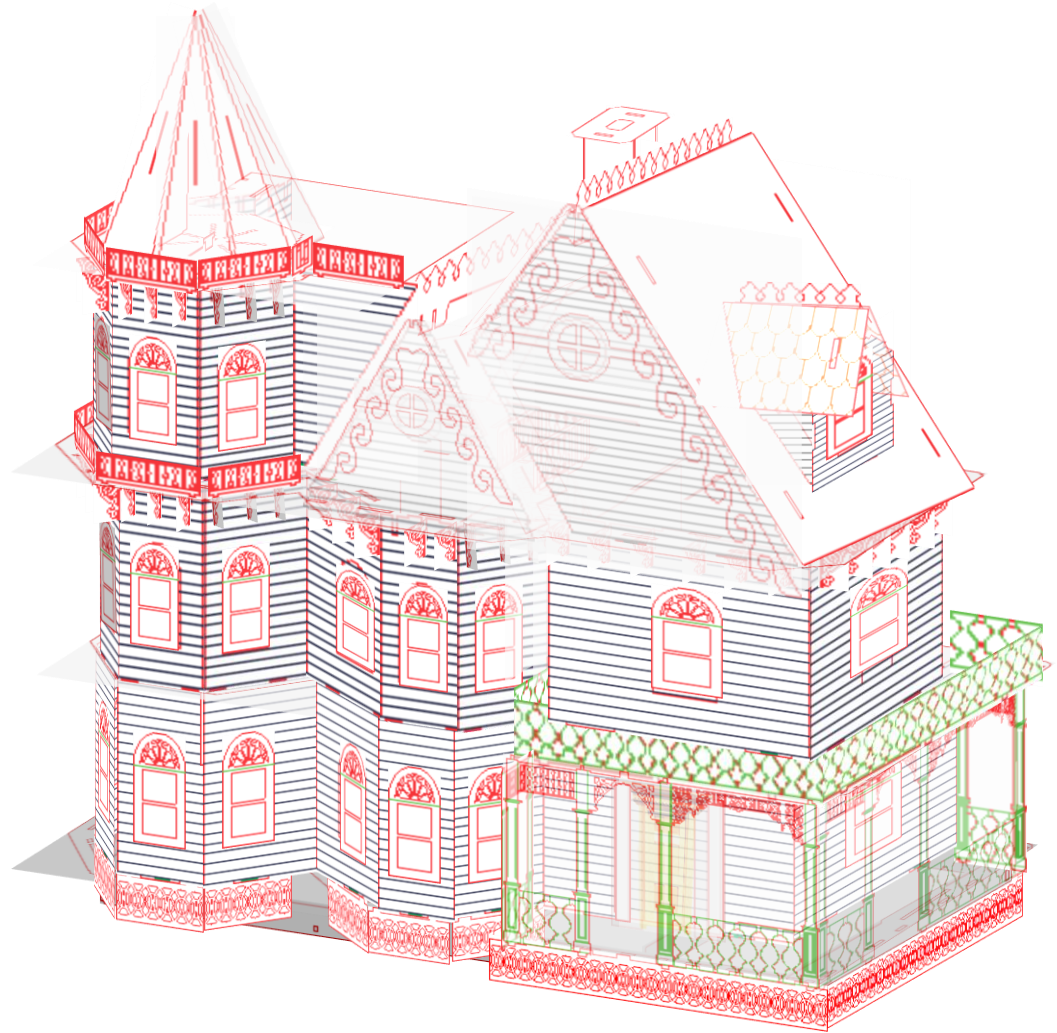
Inner wall frames



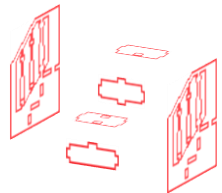
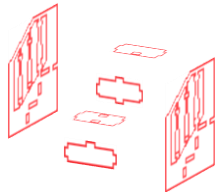
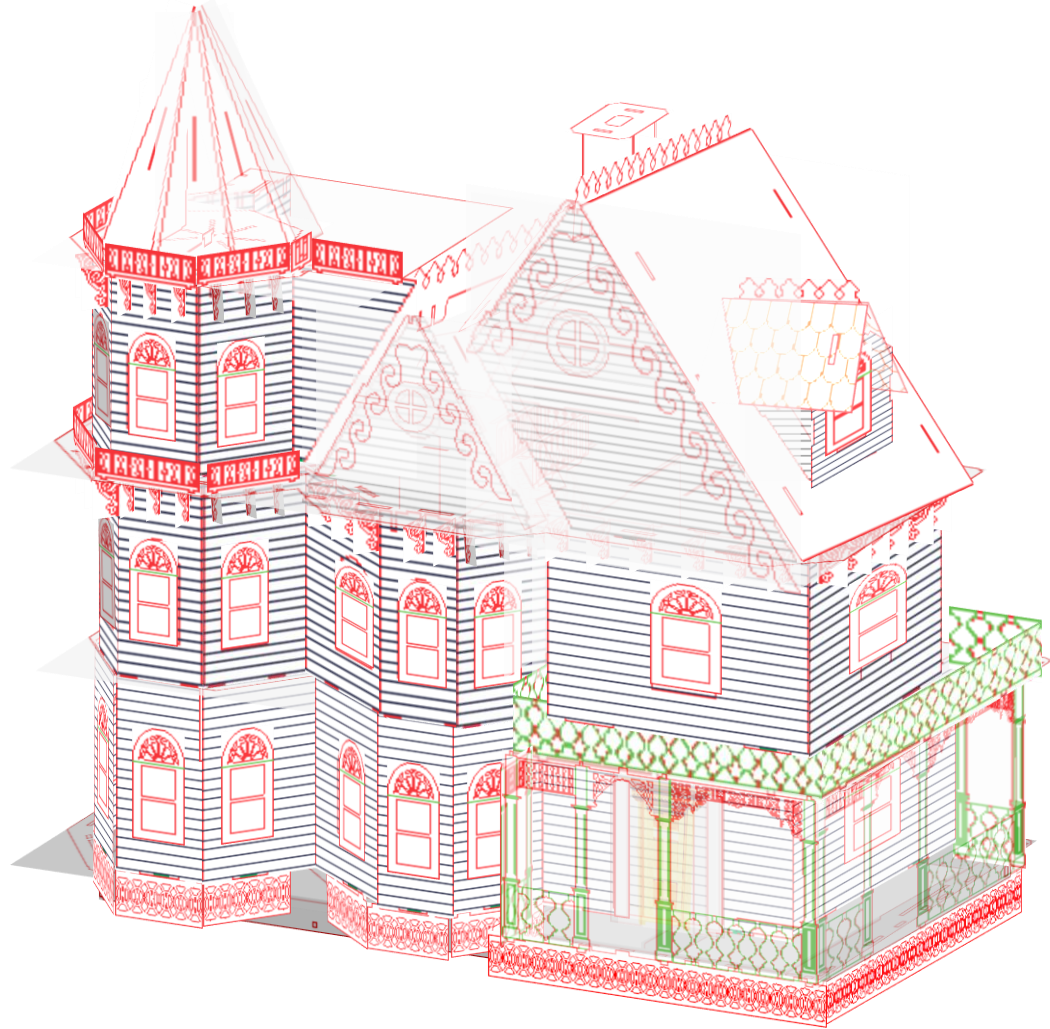
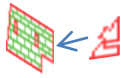
Insert tower and third  
Floor rails into slots each  
rail has its own spot

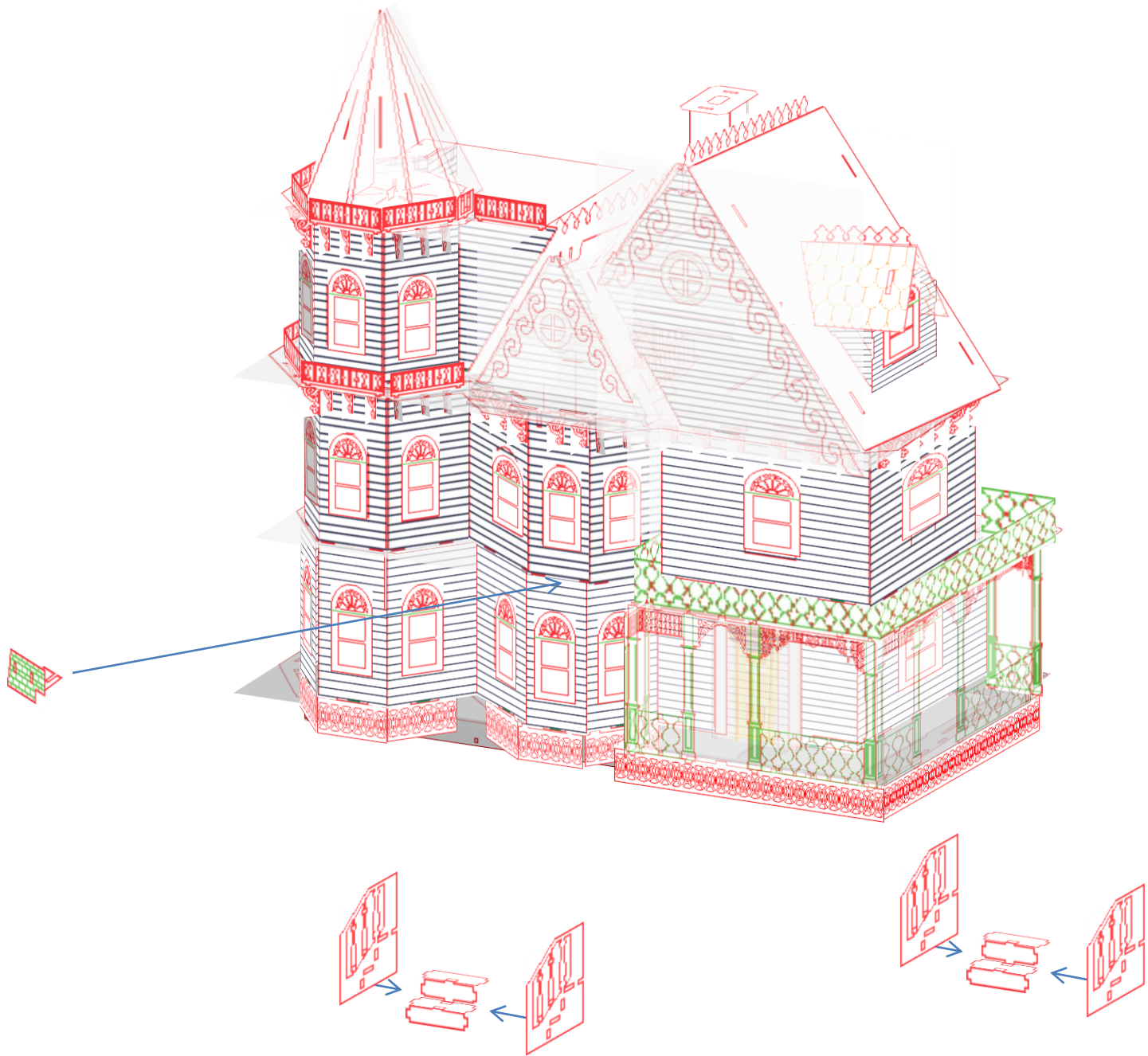


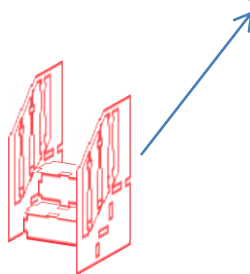
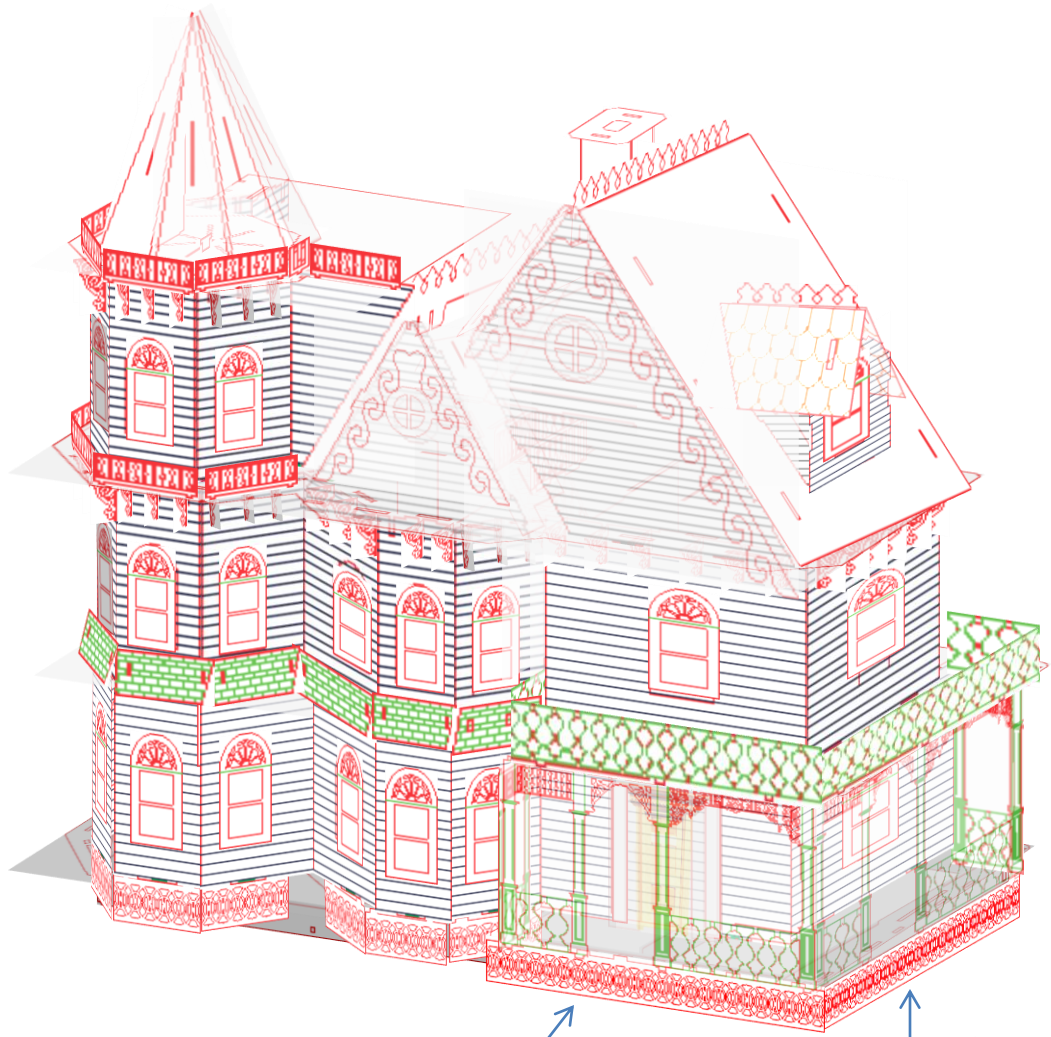
Not a part  
of the 1:48  
scale kit,  
only  
available in  
1:24 & 1:12  
scale.

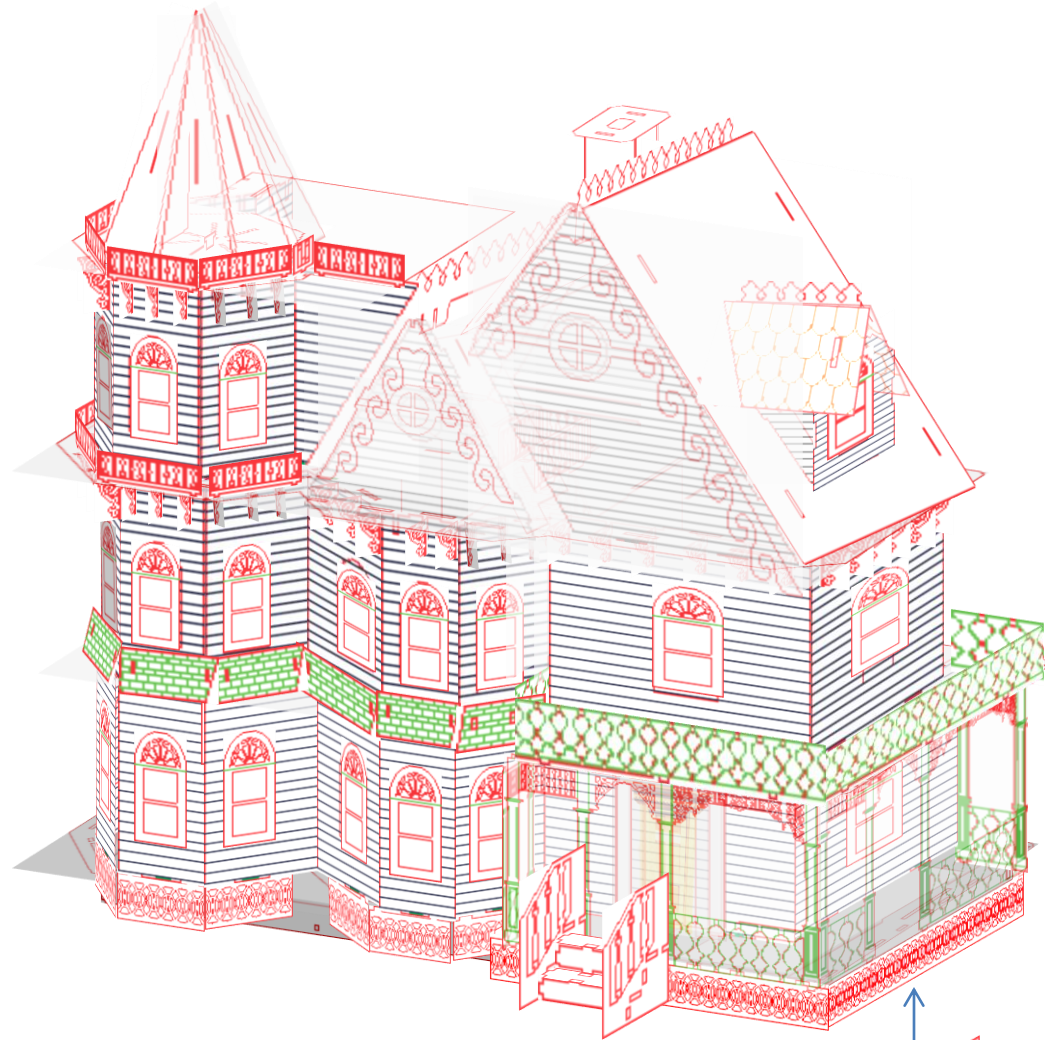












With the steps in we are now completed with the Leon Gothic. That is it, we are all assembled.  
Congratulations and Thank you for your support.

Laser Dollhouse Designs.  
[www.laserdollhouses.com](http://www.laserdollhouses.com)  
laserdollhouses@aol.com

