

# Double Garage Assembly Instructions

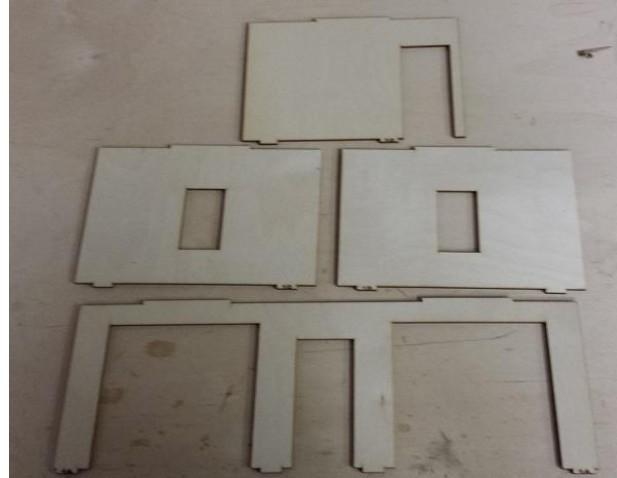
By Laser Dollhouse Designs



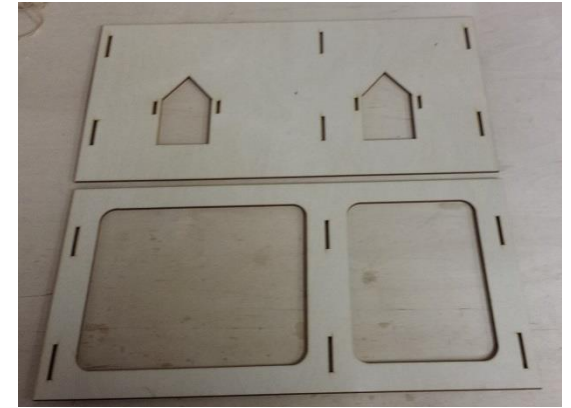
## Parts



Base/ First floor marked  
1A thru 1D



First Floor walls

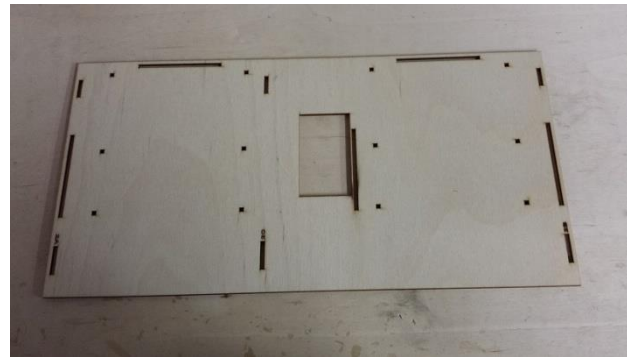


Front and rear roof panels

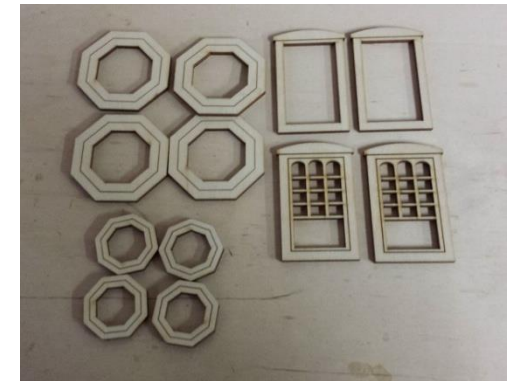


### Plexiglas inserts

- (2) Rectangle
- (2) Large octagon
- (2) small Octagon



Second Floor Base



### Window Frames

- (4) Small Octagon
- (4) Large Octagon
- (2) Outer Window
- (2) Inner Window

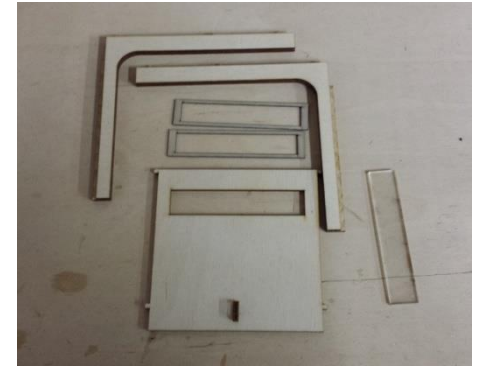
## Parts continued



Second Floor walls  
2A thru 2C



Door assemblies (2)



Garage Door assembly (2)  
(2) Outer rails  
(2) 1/32 frames  
Garage Door  
Plexiglas



Dormer Assembly (2)



Stair assembly  
and rails

**Note : Highly recommend dry assembly (NO GLUE) prior to actual assembly to familiarize with parts and locations.**

Materials for build;

1. Wood glue, you may use Titebond, Elmer's or any good wood glue
2. Masking tape to hold house in place during (dry) assembly and gluing.





These instructions will cover basic assembly, during the instructions we will not be adding all window frames and glass. When and how you build after the dry assembly is up to you, we assume if you are gluing that you have painted and installed all window frames and glass.

Step 1. Locate the garage door rails and wall 1A as seen in figure 1.

Step 2. Glue the rails to the two openings making sure the openings in the rails face inward. Also make sure they are flush to the top of the opening in wall 1A and upper wall. Figure 2.

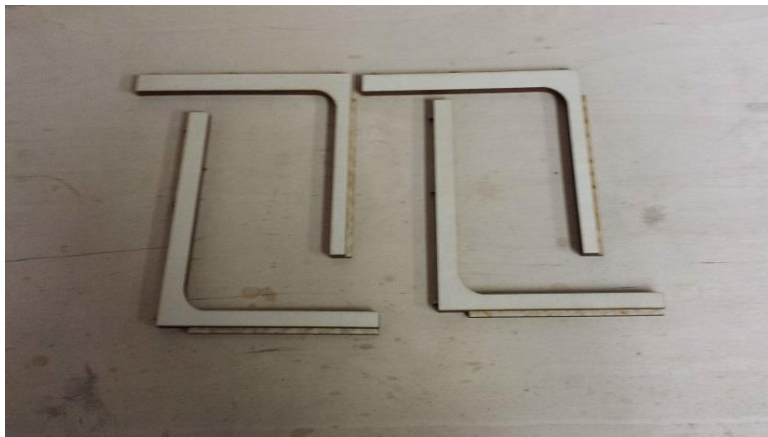


Figure 1



Figure 2

Step 3. Add the garage door outer window frame by making sure it is aligned by viewing from the opposite side, figure 3.

Step 4. Add glass to opening in the door wall and align opposite side frame with installed frame, figure 4.

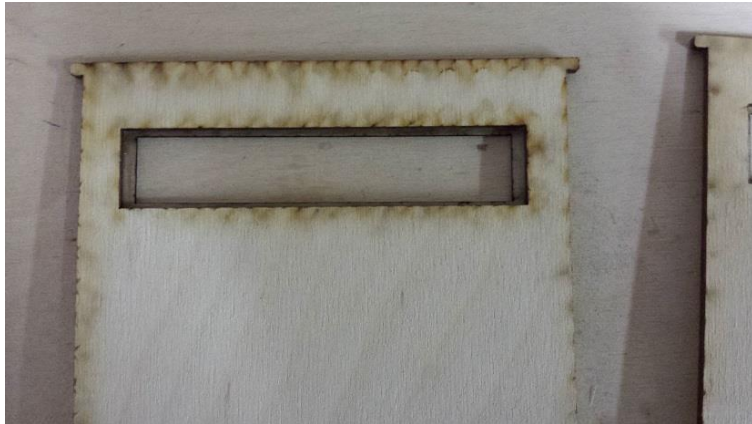


Figure 3



Figure 4

Step 5. Insert garage doors and slide down through opening in rails, figure 5

Step 6. Insert walls 1A thru 1D into floor marked with 1A thru 1D slots, align tabs into slots as seen in figure 6.



Figure 5



Figure 6



Step 7. Install doors into wall 1A and 1C, figure 7.

Step 8. Install floor marked 2A thru 2C, align with first floor walls and insert garage door rail tabs into 2<sup>nd</sup> floor. Figure 8. Now make sure garage door slides up and opens freely.



Figure 7

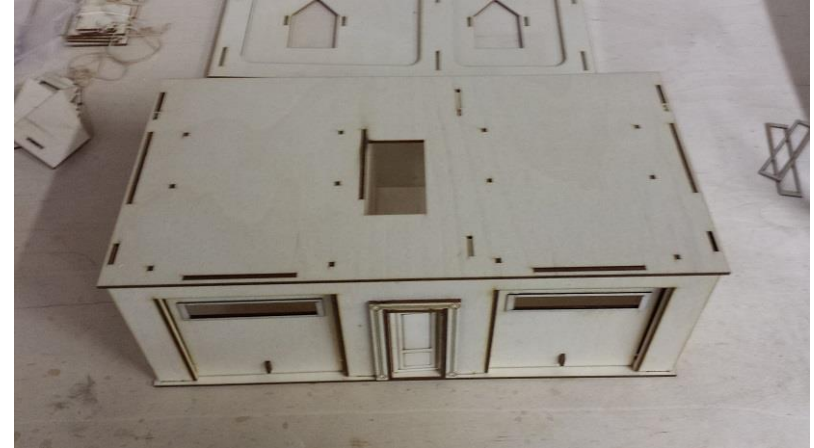


Figure 8

Step 9. Install walls 2A thru 2C, figure 9.

Step 10. Install front and rear roof panels, figure 10.

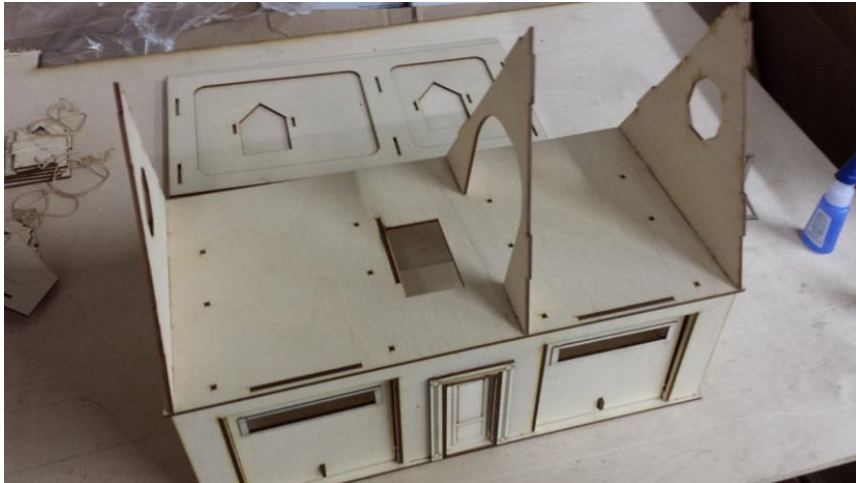


Figure 9



Figure 10

Step 11. Install dormer side walls to front roof panel, figure 11.

Step 12. Install front Dormer walls, figure 12



Figure 11



Figure 12

Step 13. install Dormer roof panels, figure 13.

Step 14 Install dormer interior frame, figure 14.



Figure 13



Figure 14

Step 15. Assemble safety rails using 4 newel post, (3) upper hand rails , (3) lower rails and 15 spindles. On side rails align 6 spindles and the rear 3 spindles evenly, figure 15.

Step 16. Assemble the stair case by Houseworks by using instructions, make sure treads have handrail on left side. Once complete install in opening of floor with top tread flush with surrounding floor. Figure 16.



Figure 15



Figure 16





Laser Dollhouse Designs  
[www.laserdollhouses.com](http://www.laserdollhouses.com)  
Email: laserdollhouses@aol.com