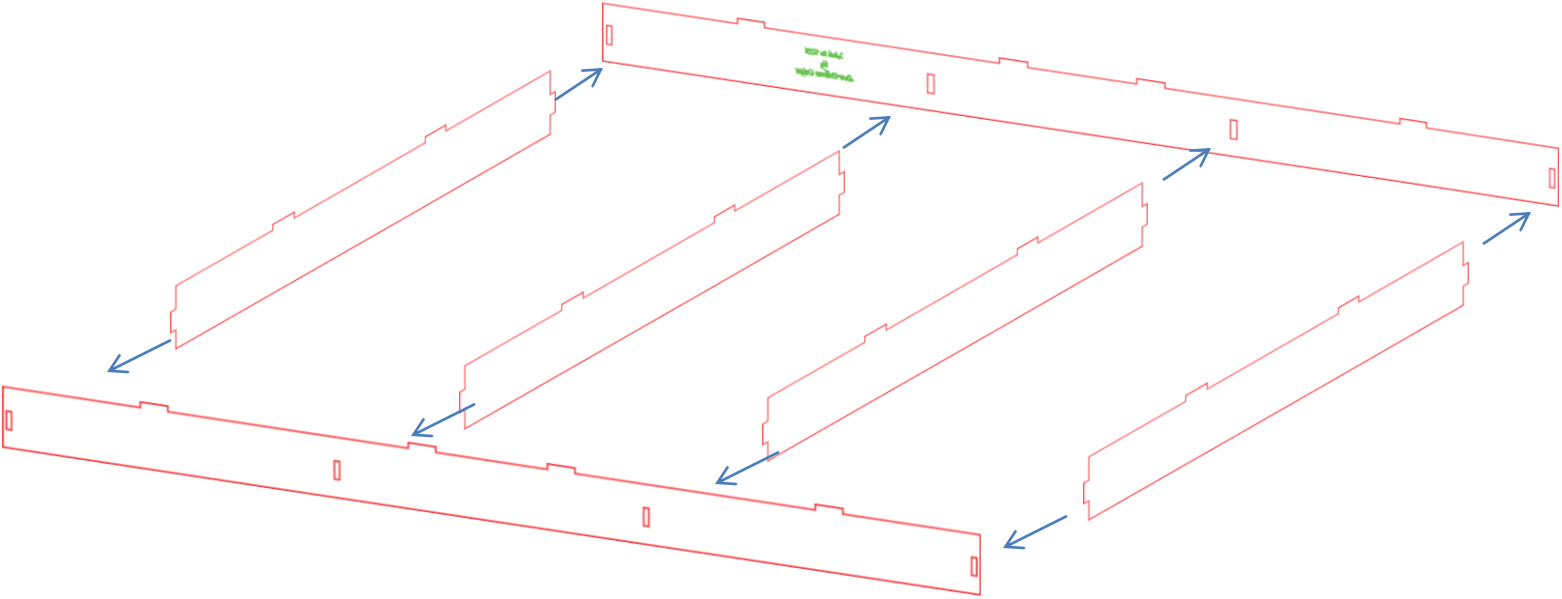
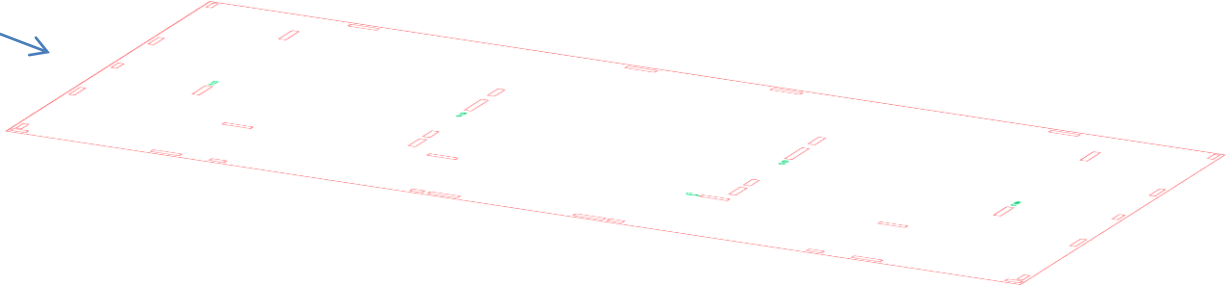


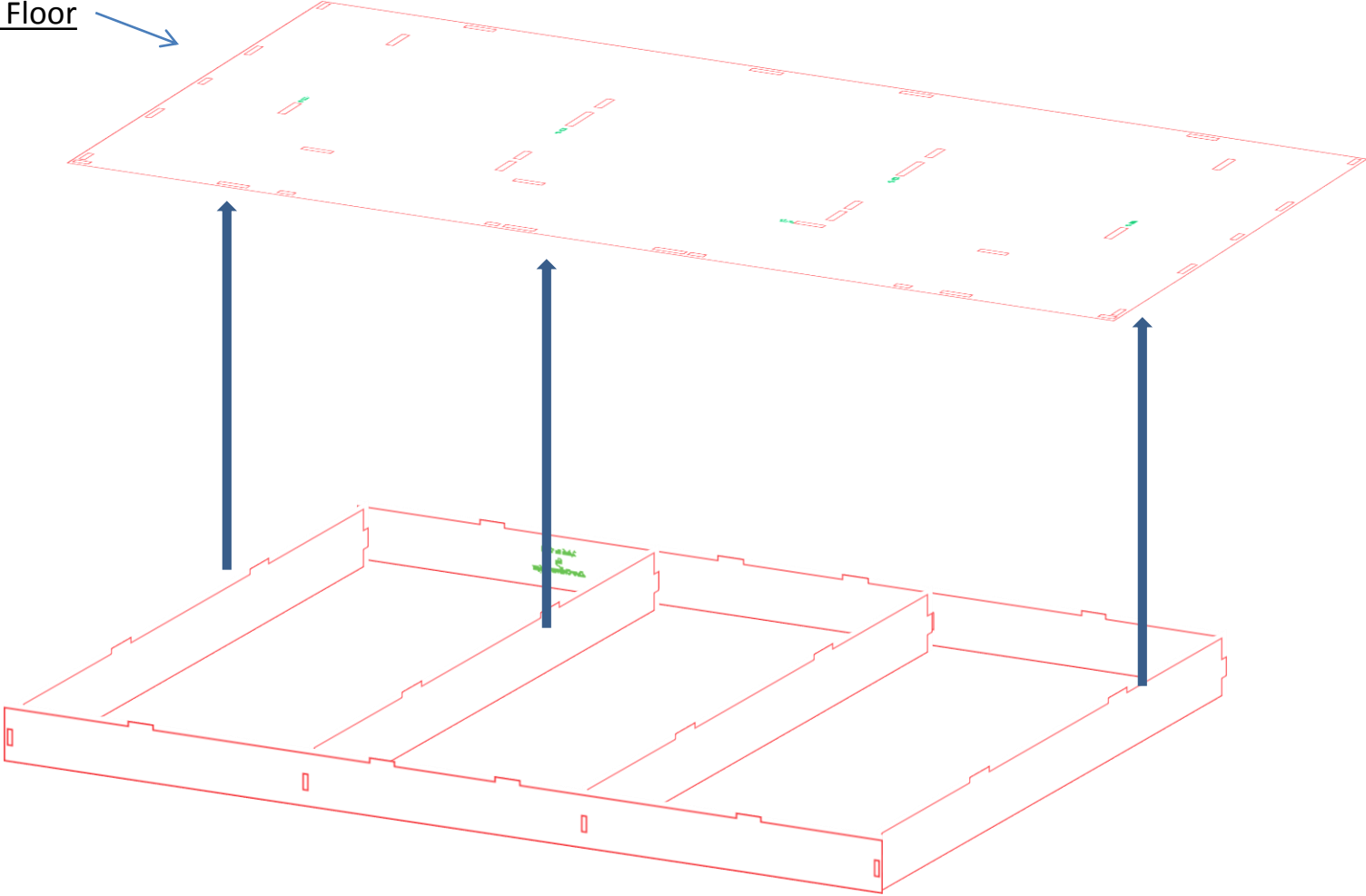
Country Villa assembly instructions
By
Laser Dollhouse Designs

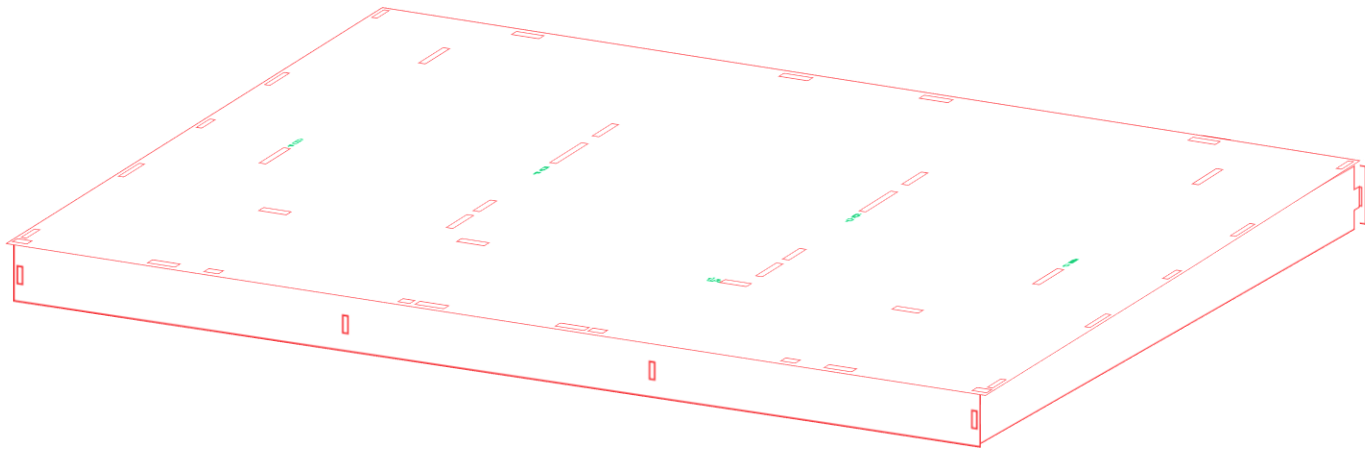


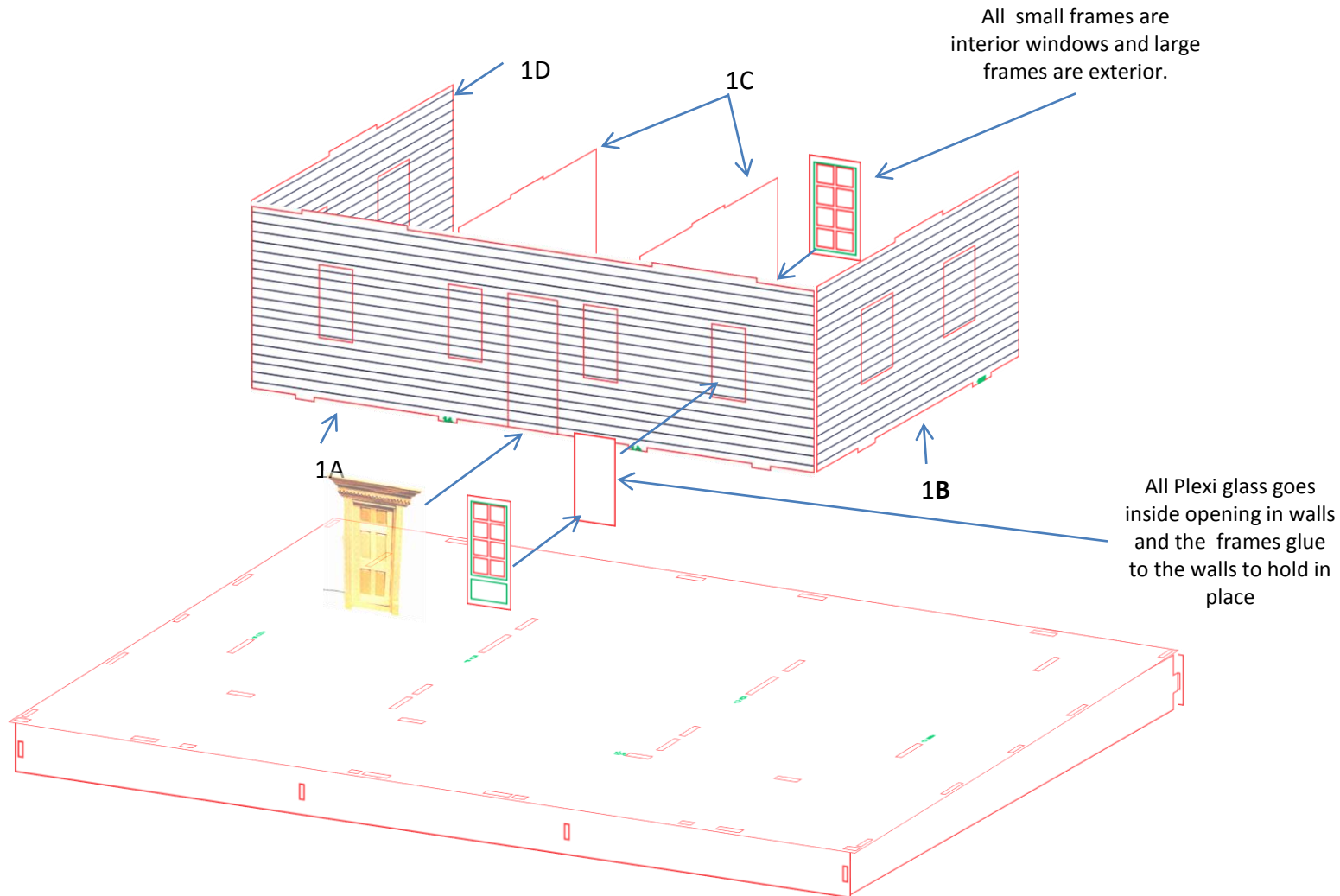
First Floor

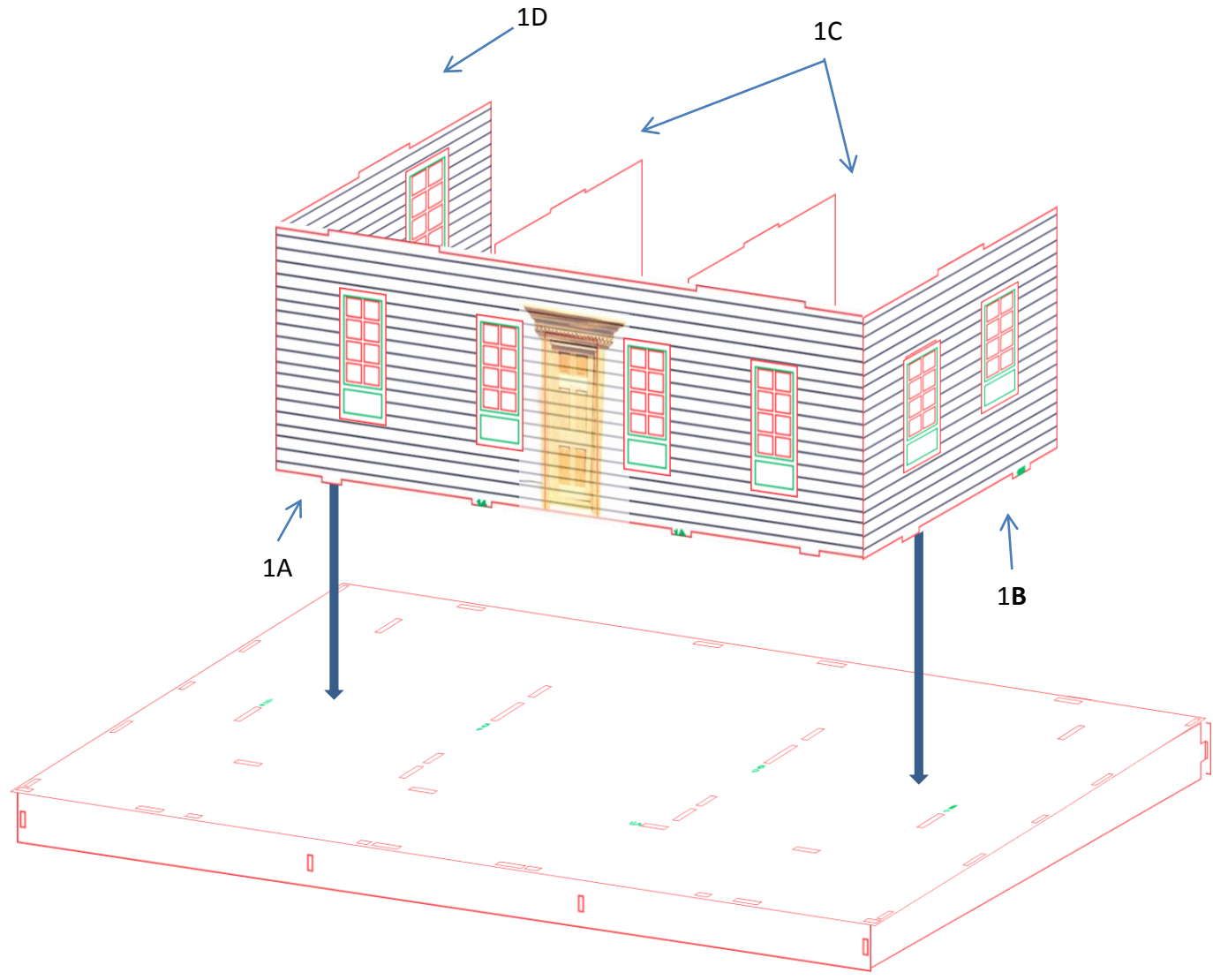


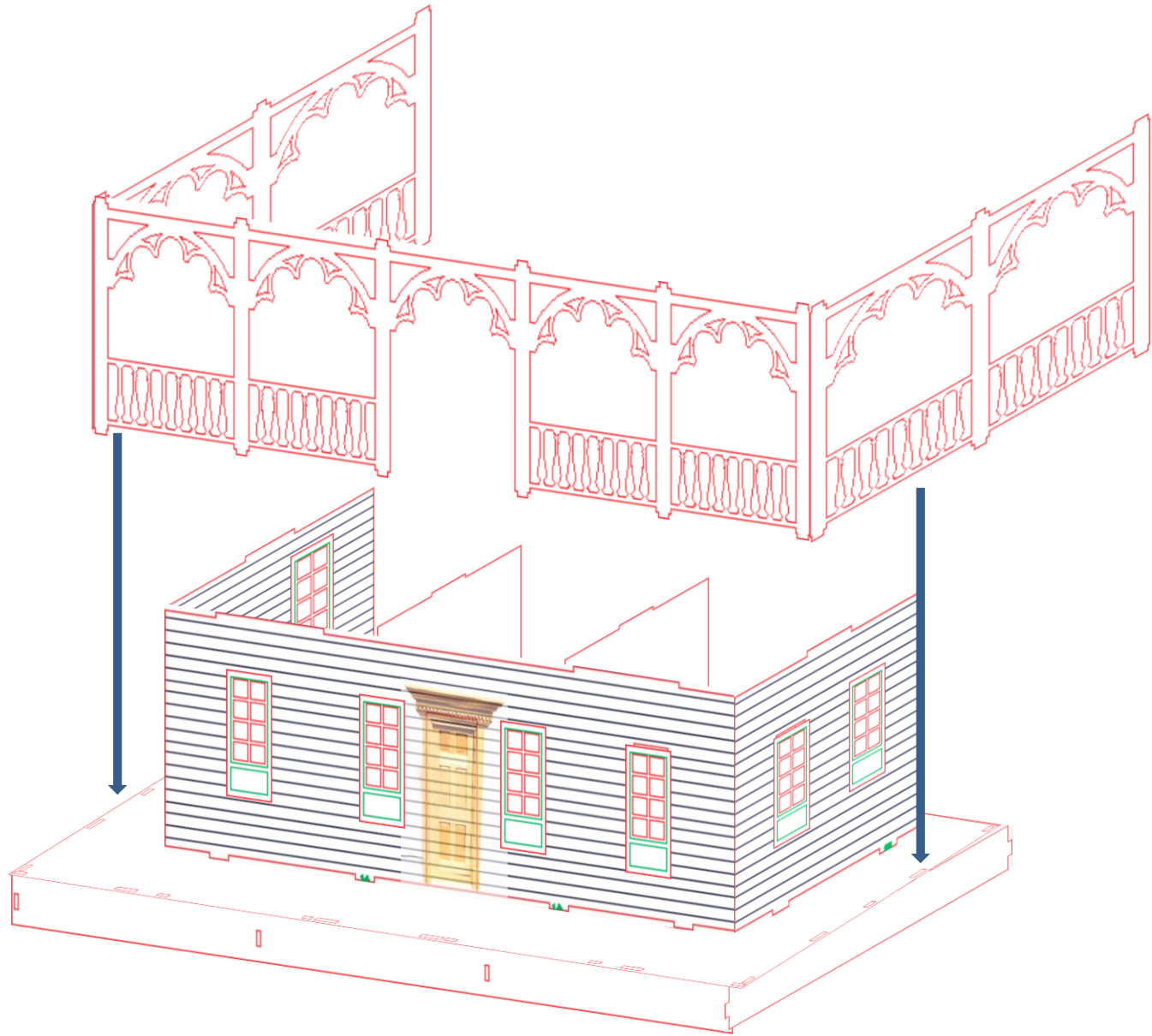
First Floor



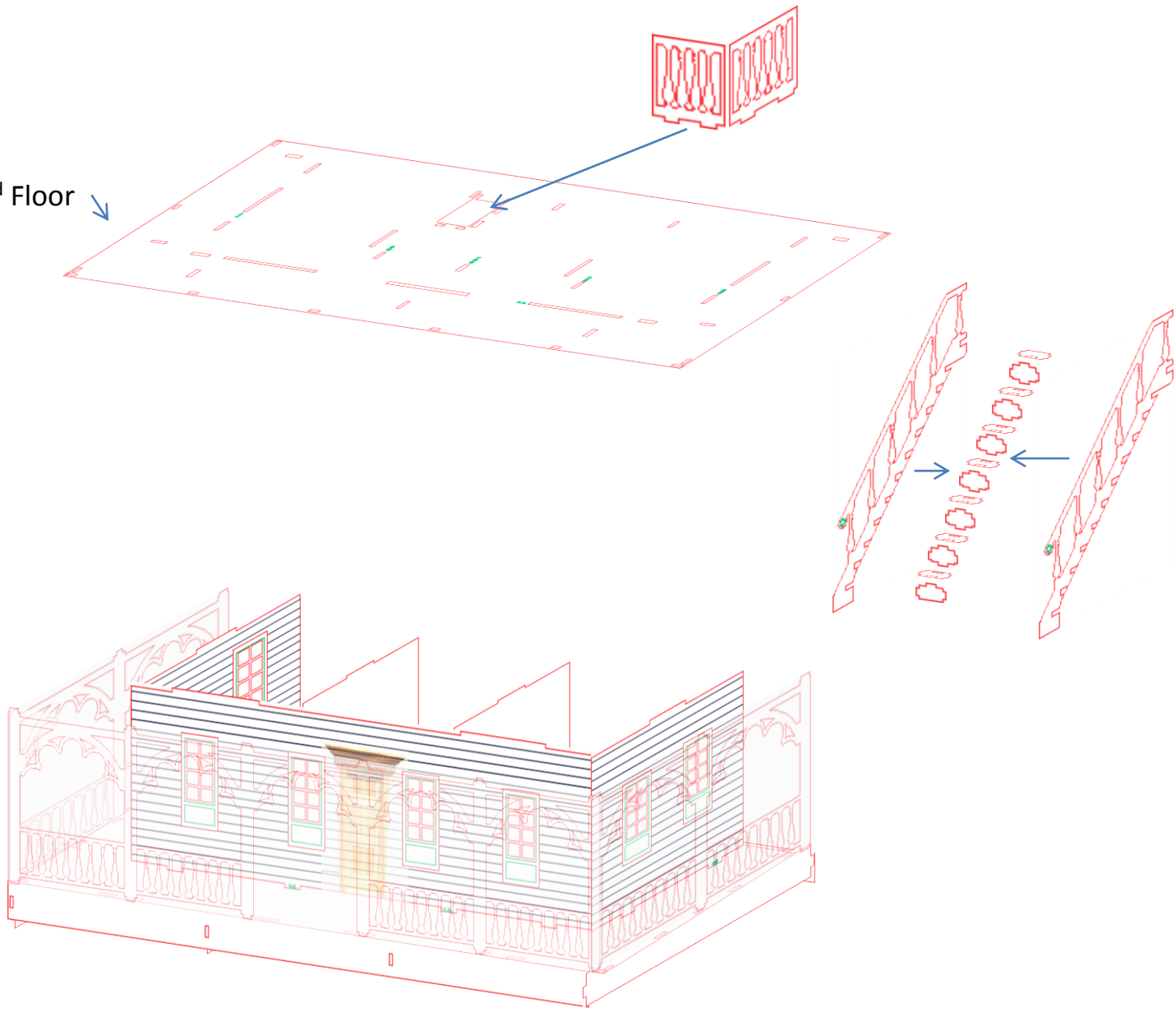




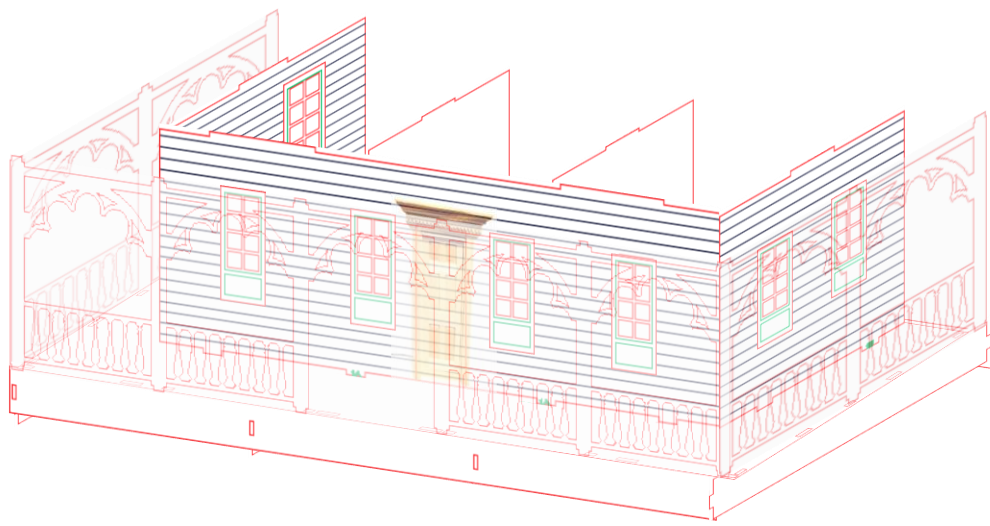
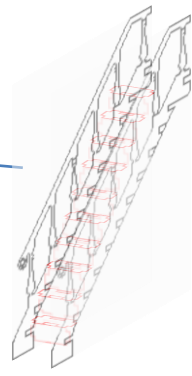
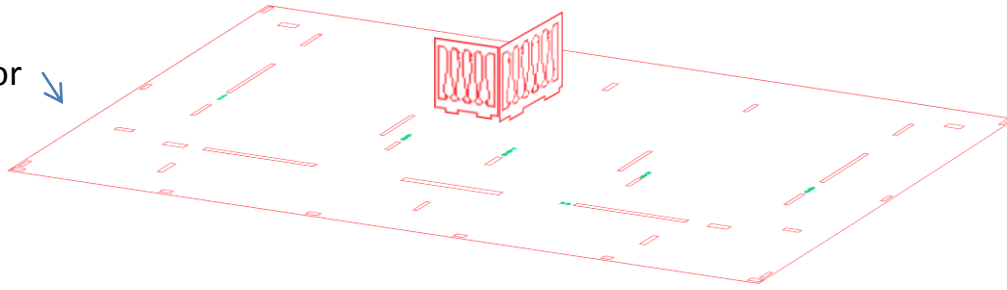




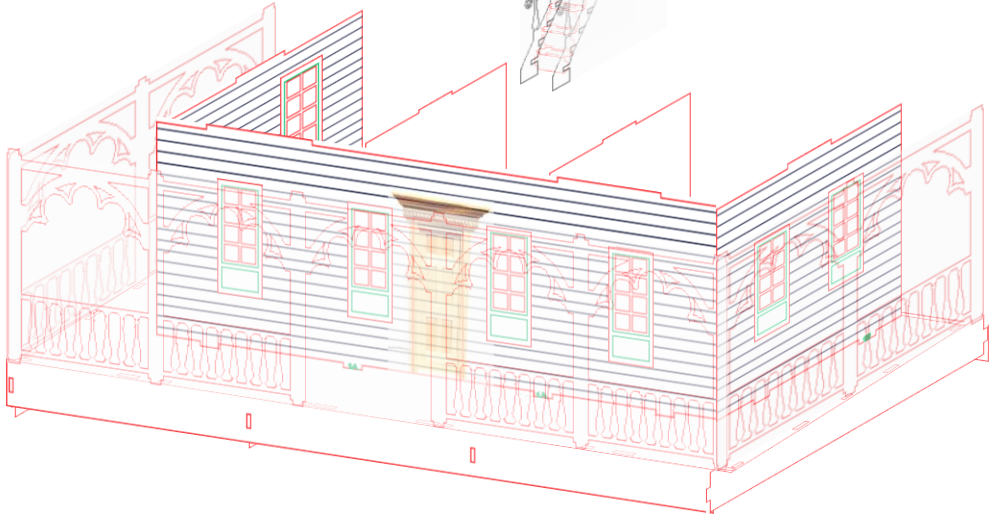
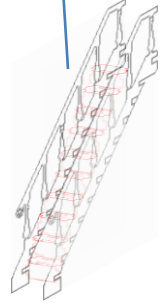
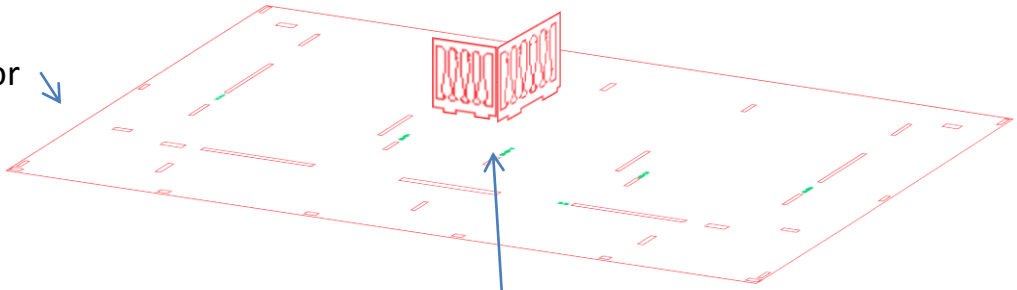
2nd Floor



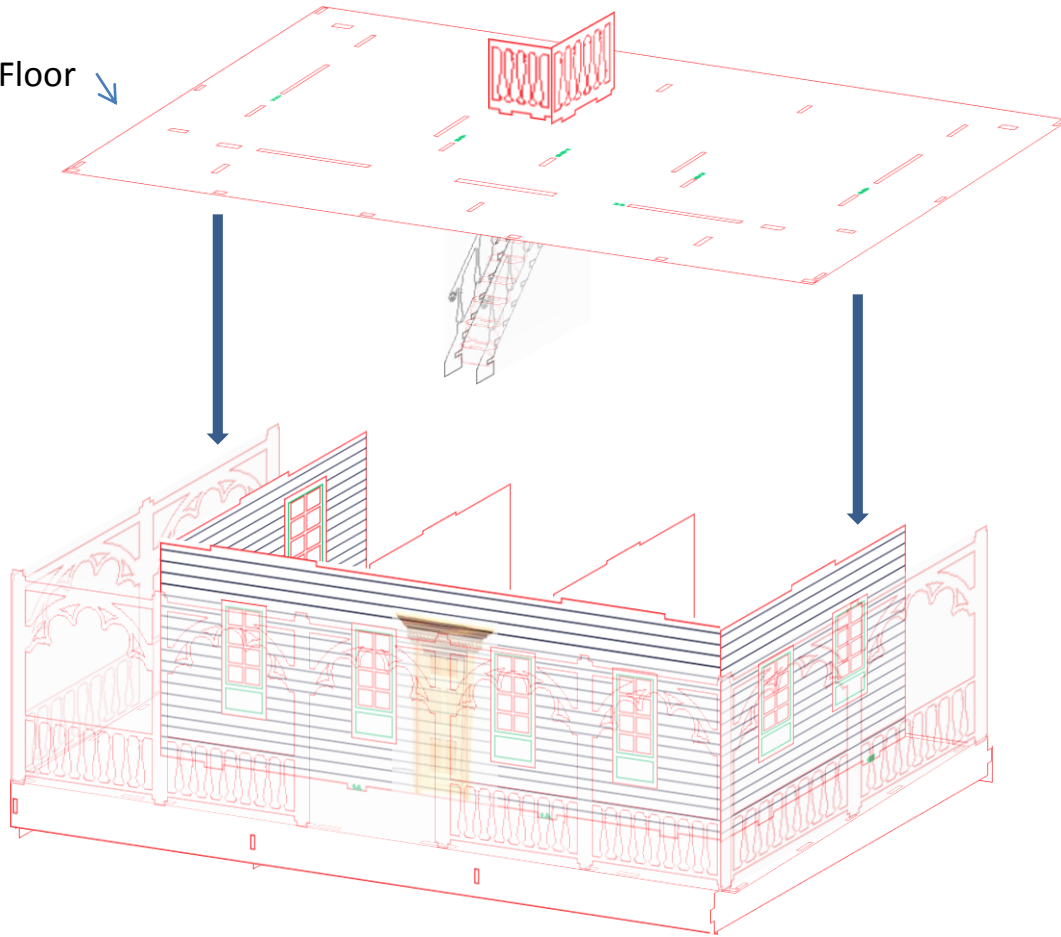
2nd Floor ↓



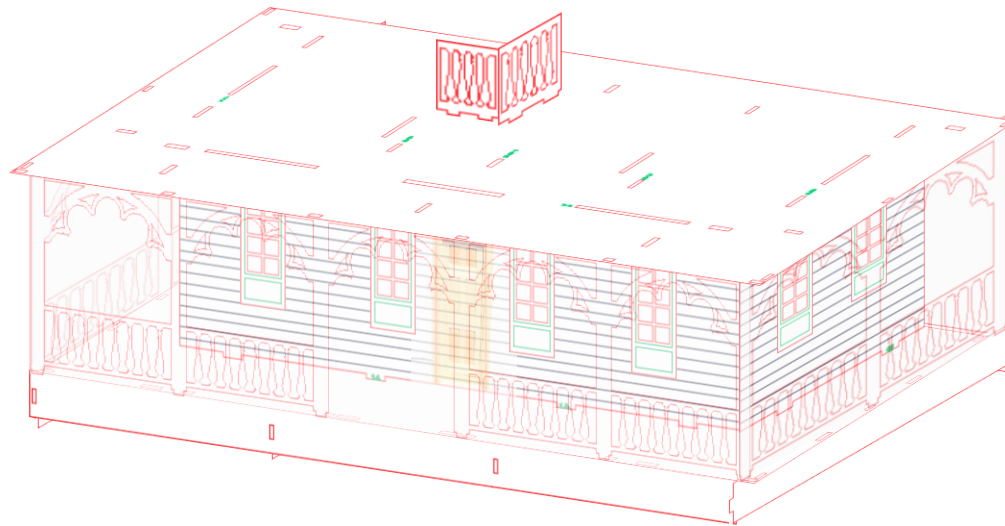
2nd Floor

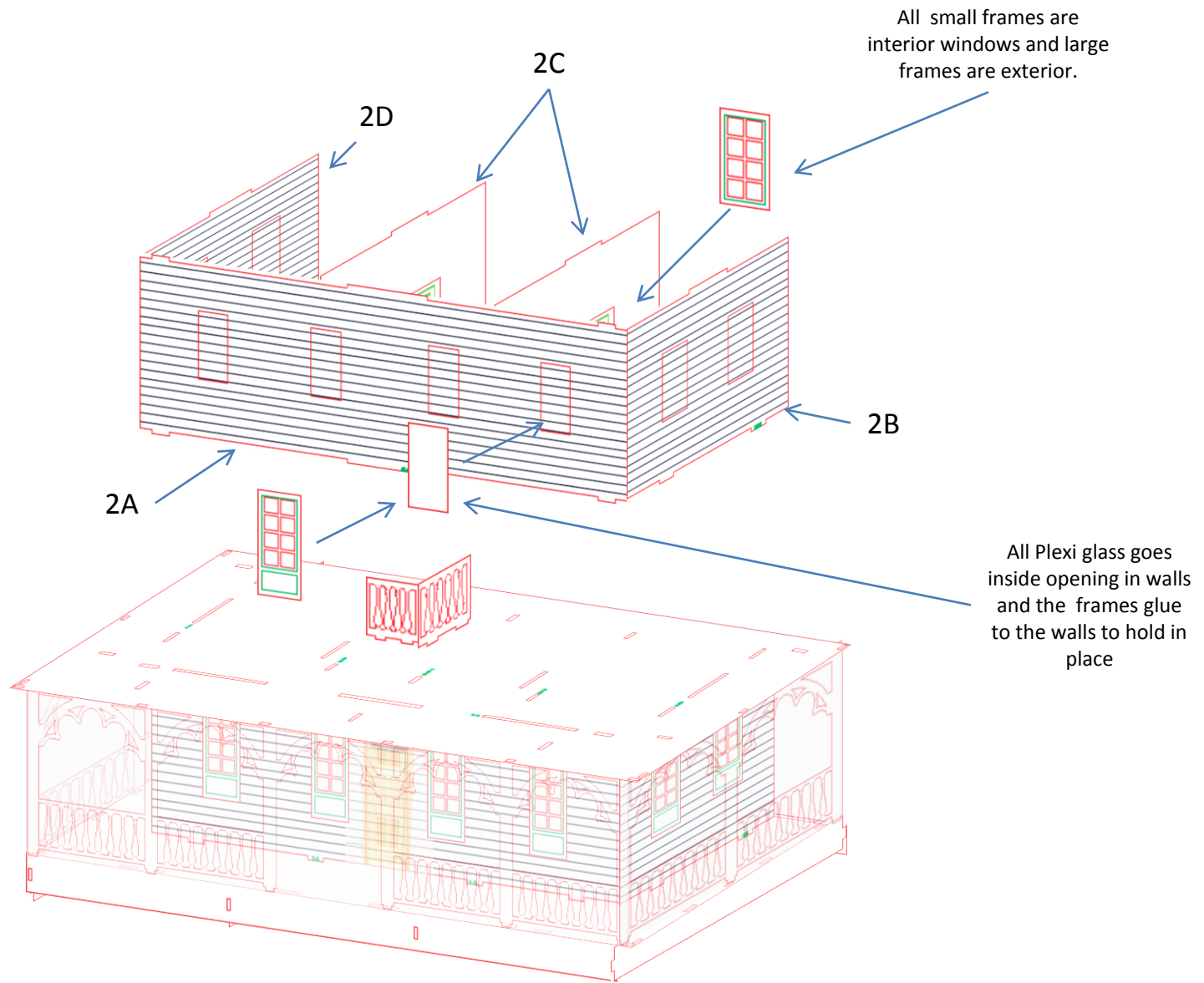


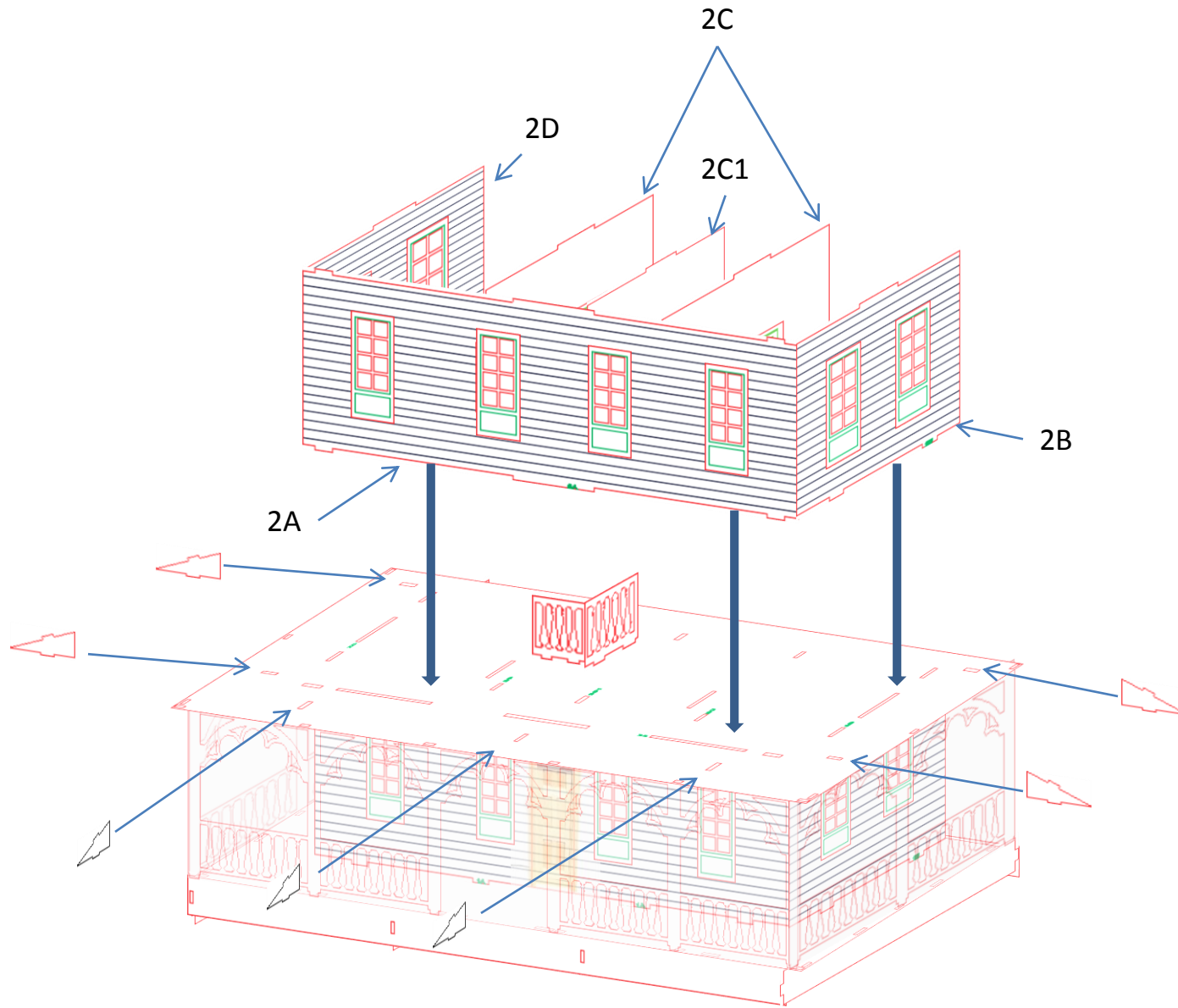
2nd Floor ↘



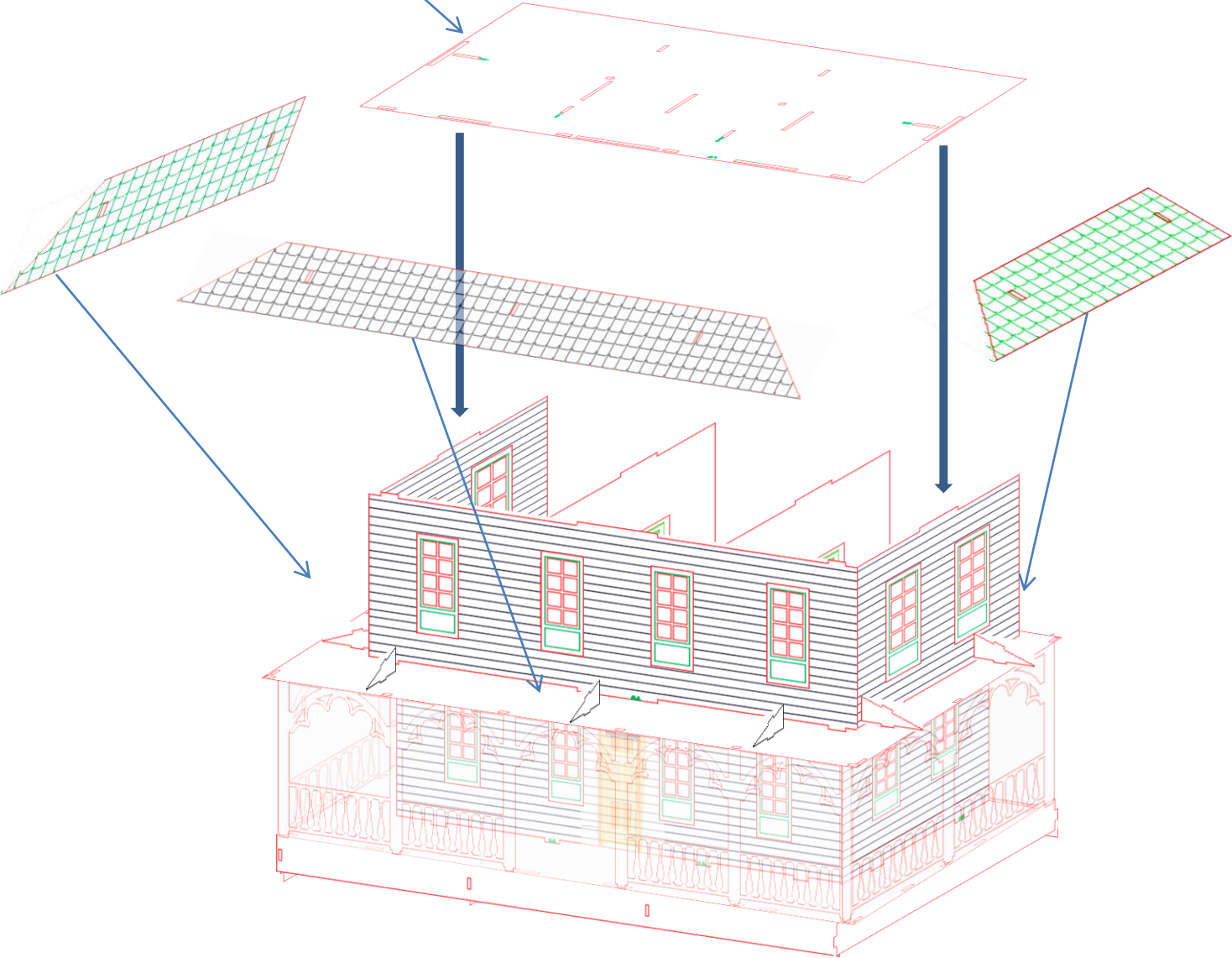
First floor complete, that was not bad at all.....



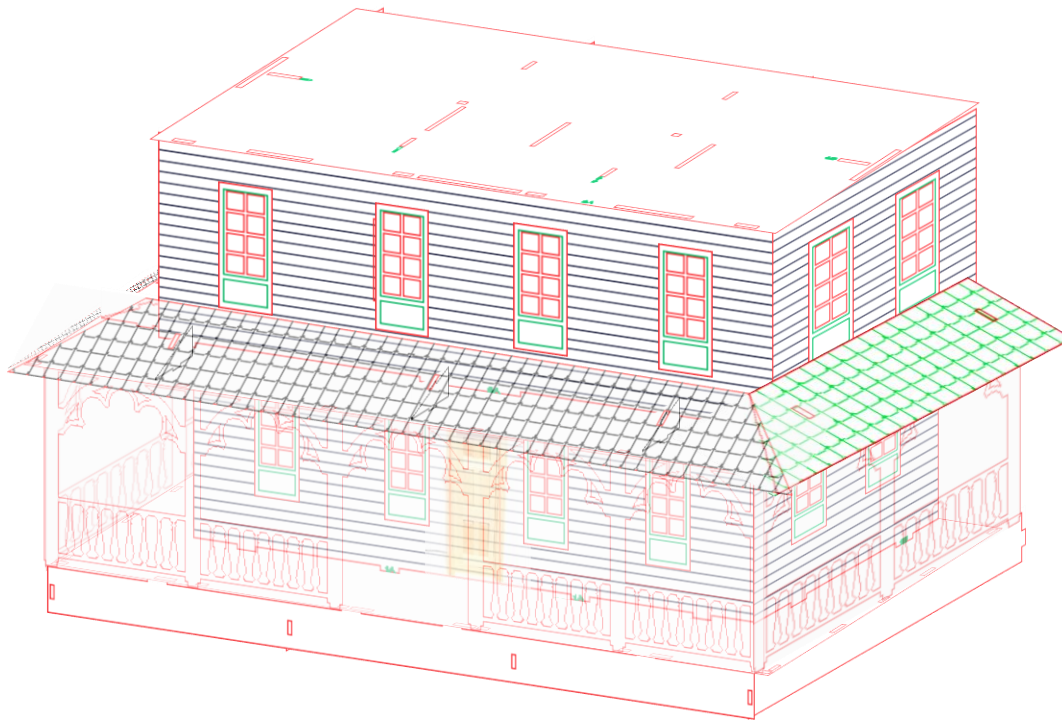


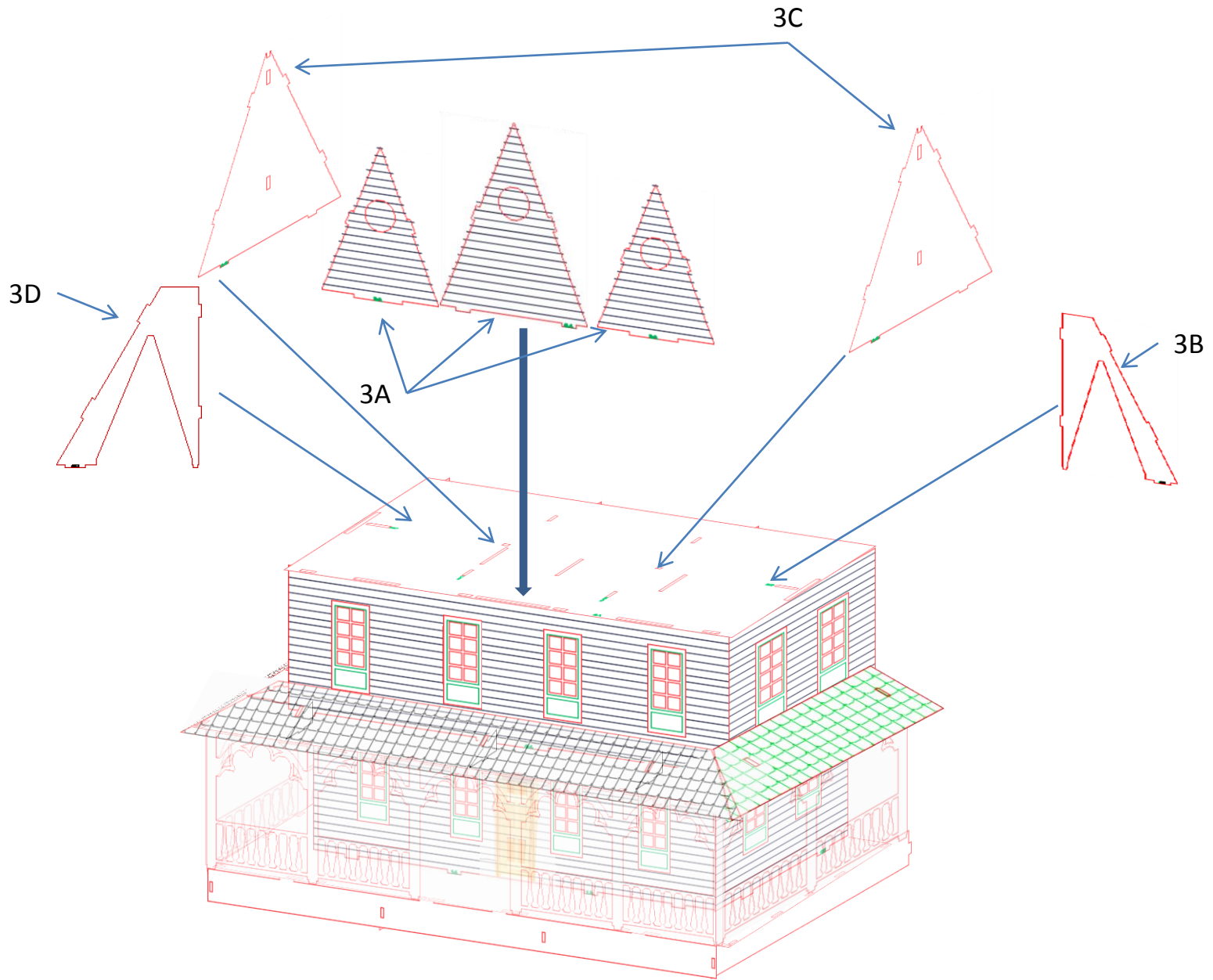


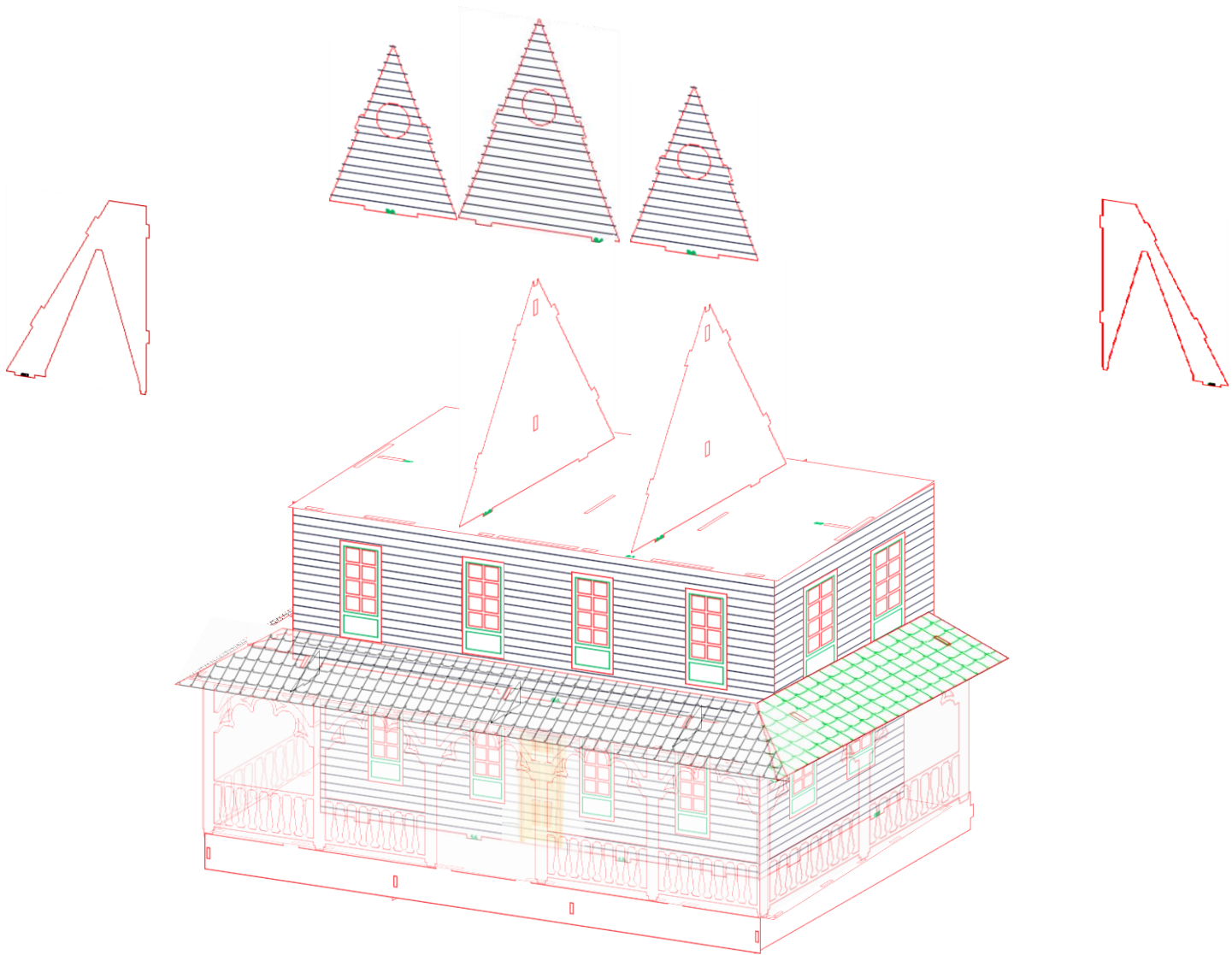
3rd Floor

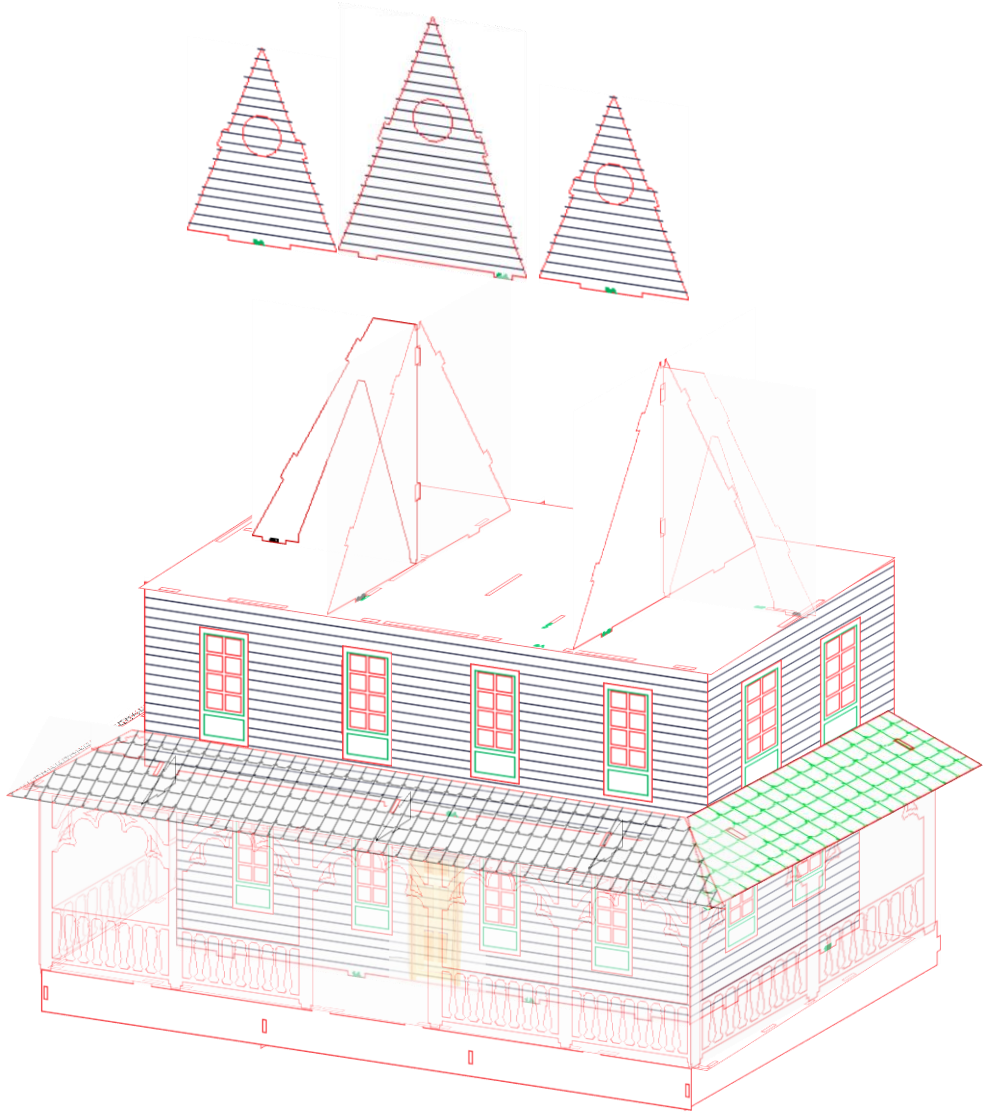


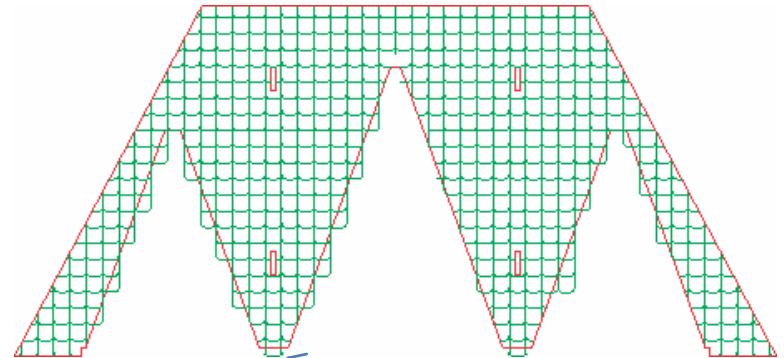
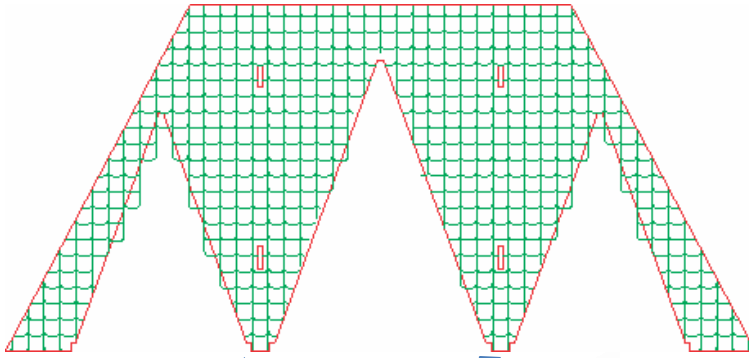
Ok 2ND Floor complete. On to the ROOF.





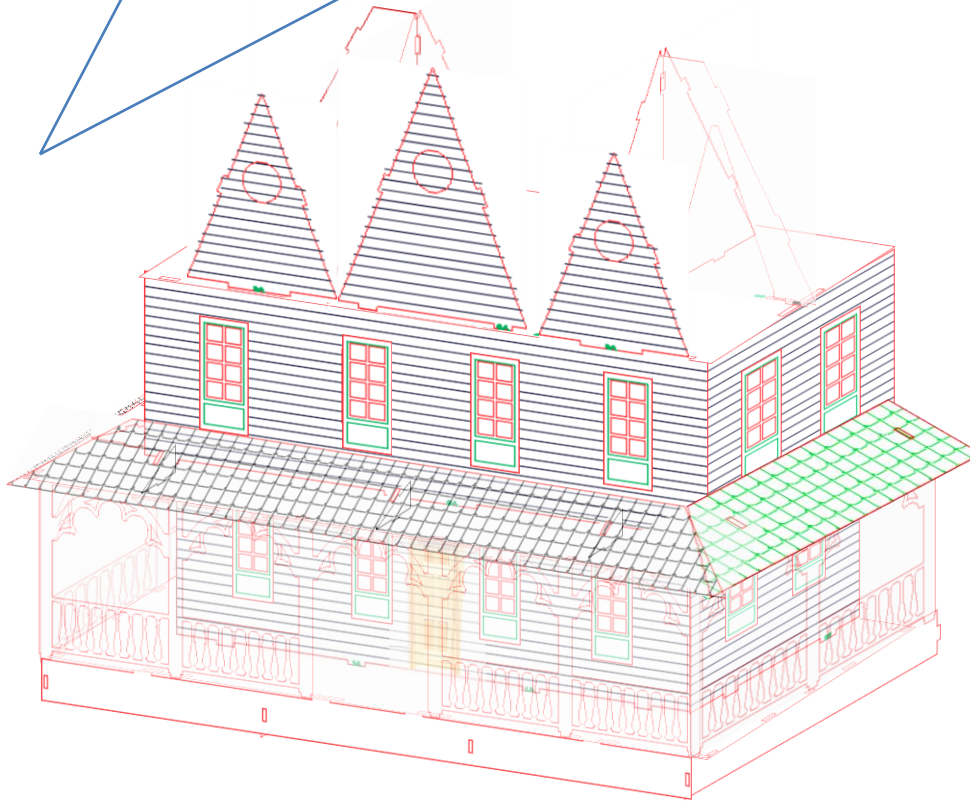


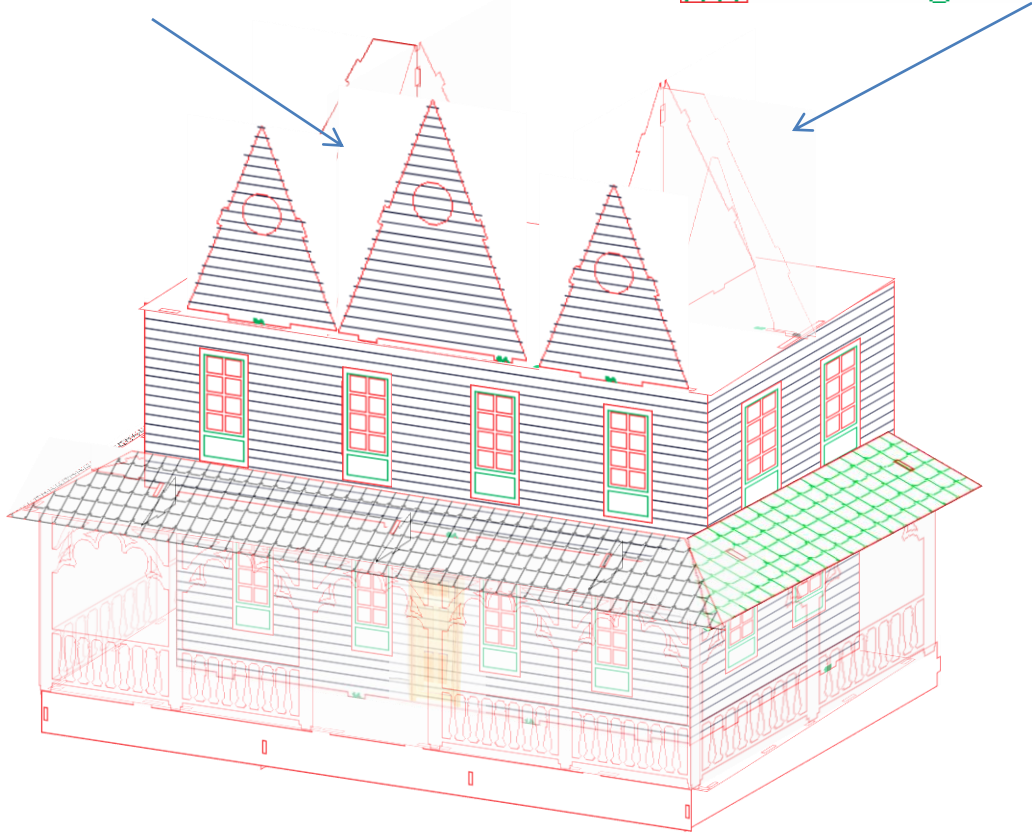
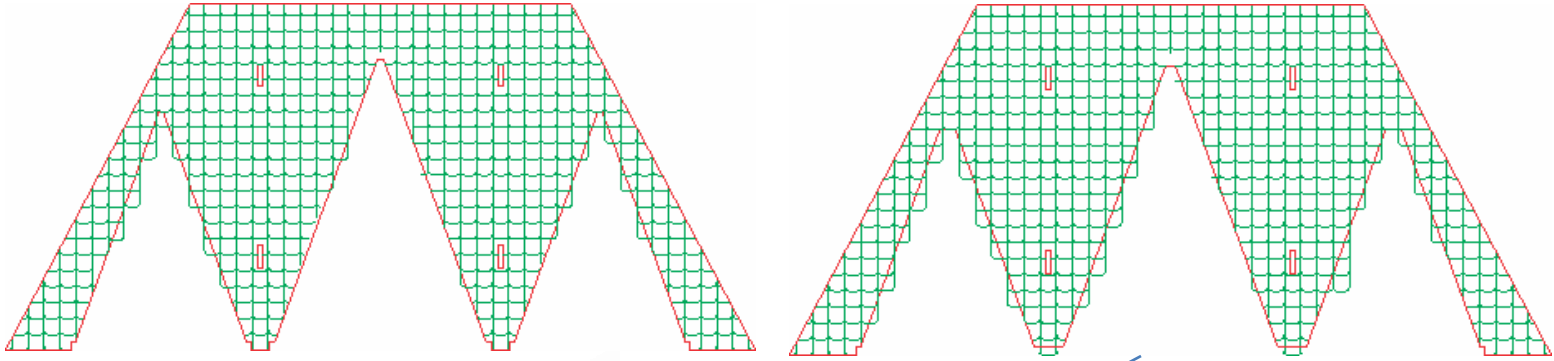




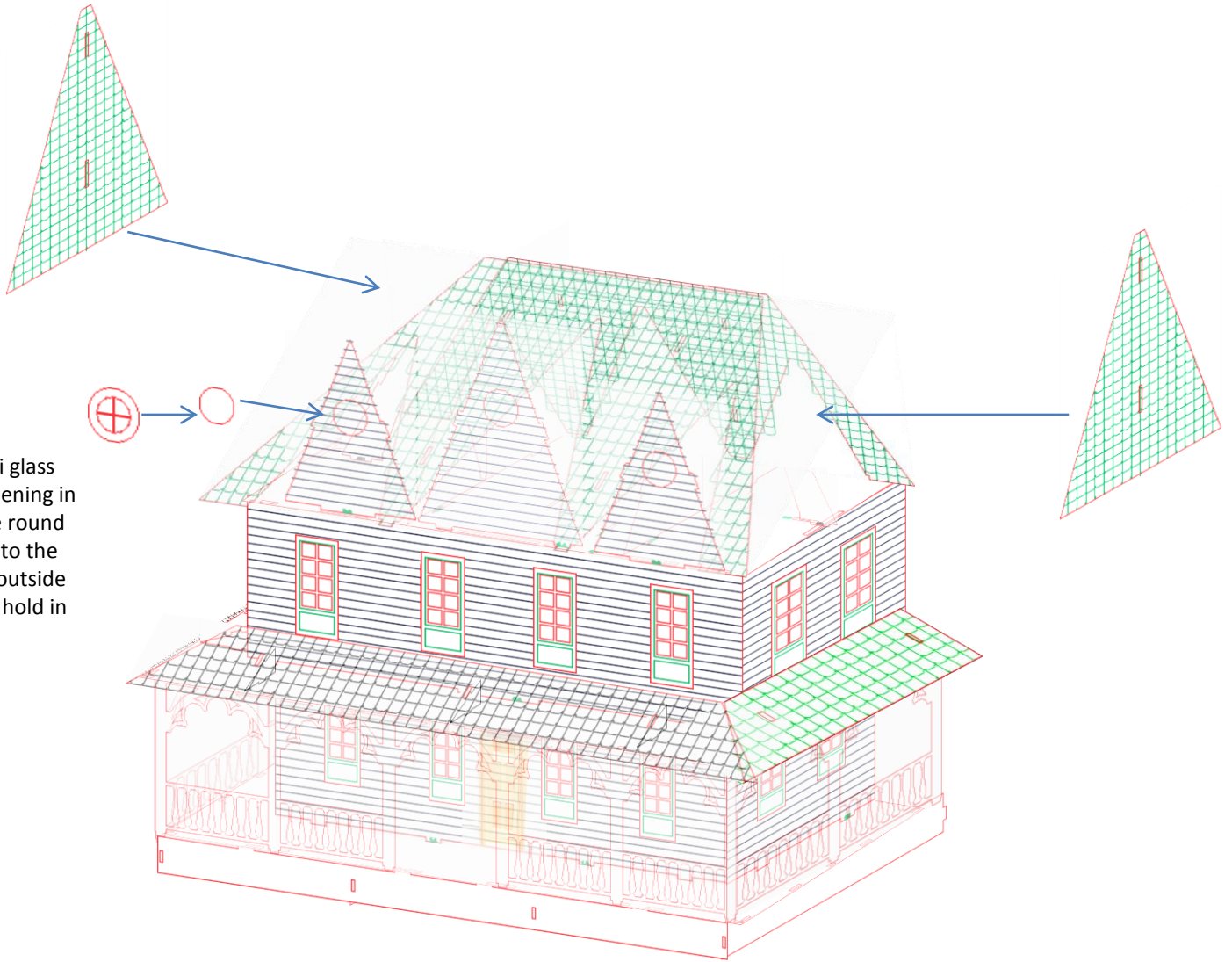
Take note of tab extensions on one Roof, this is the front roof section.

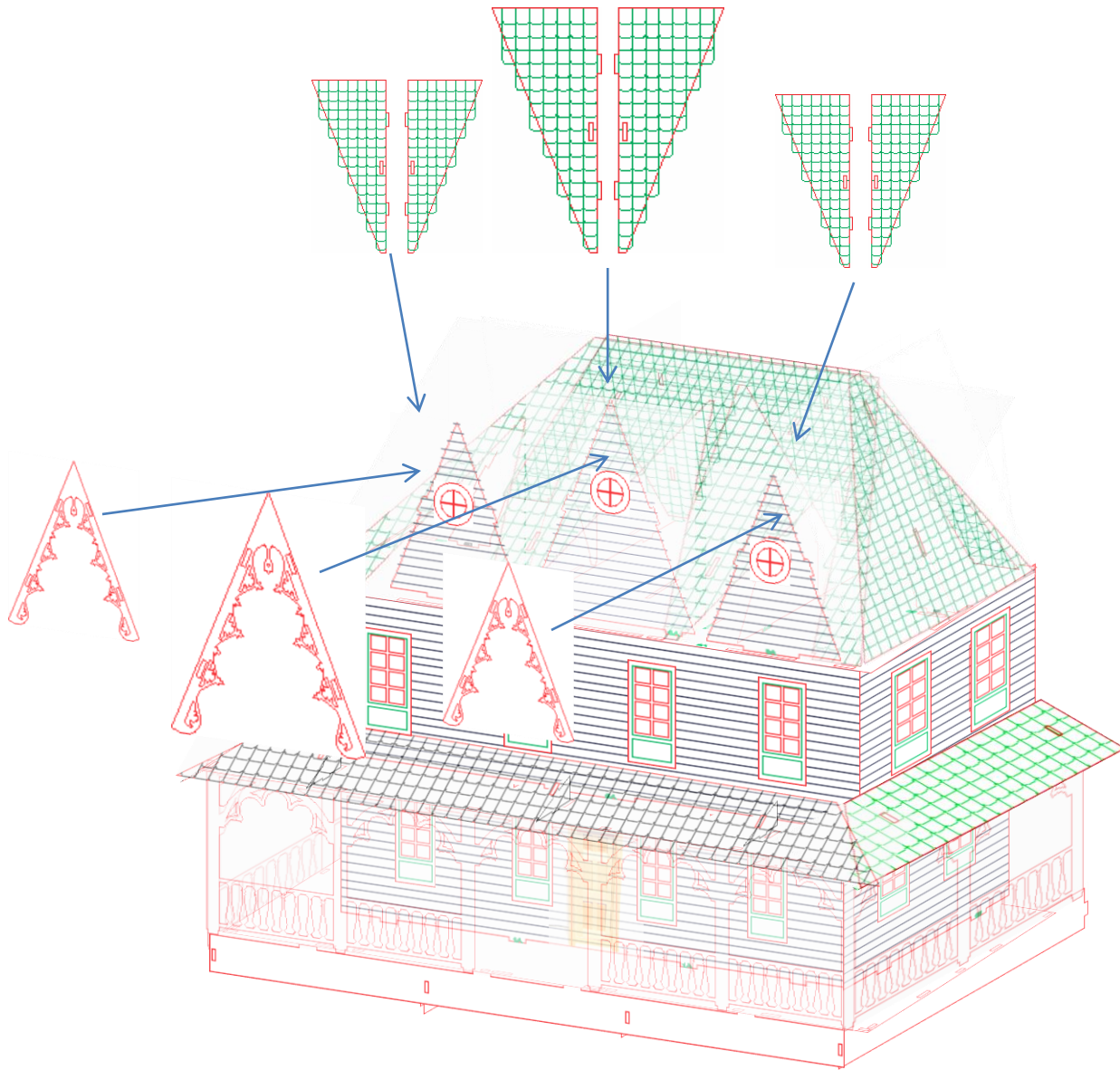
Take note NO tab extensions on one Roof, this is the rear/back roof section.

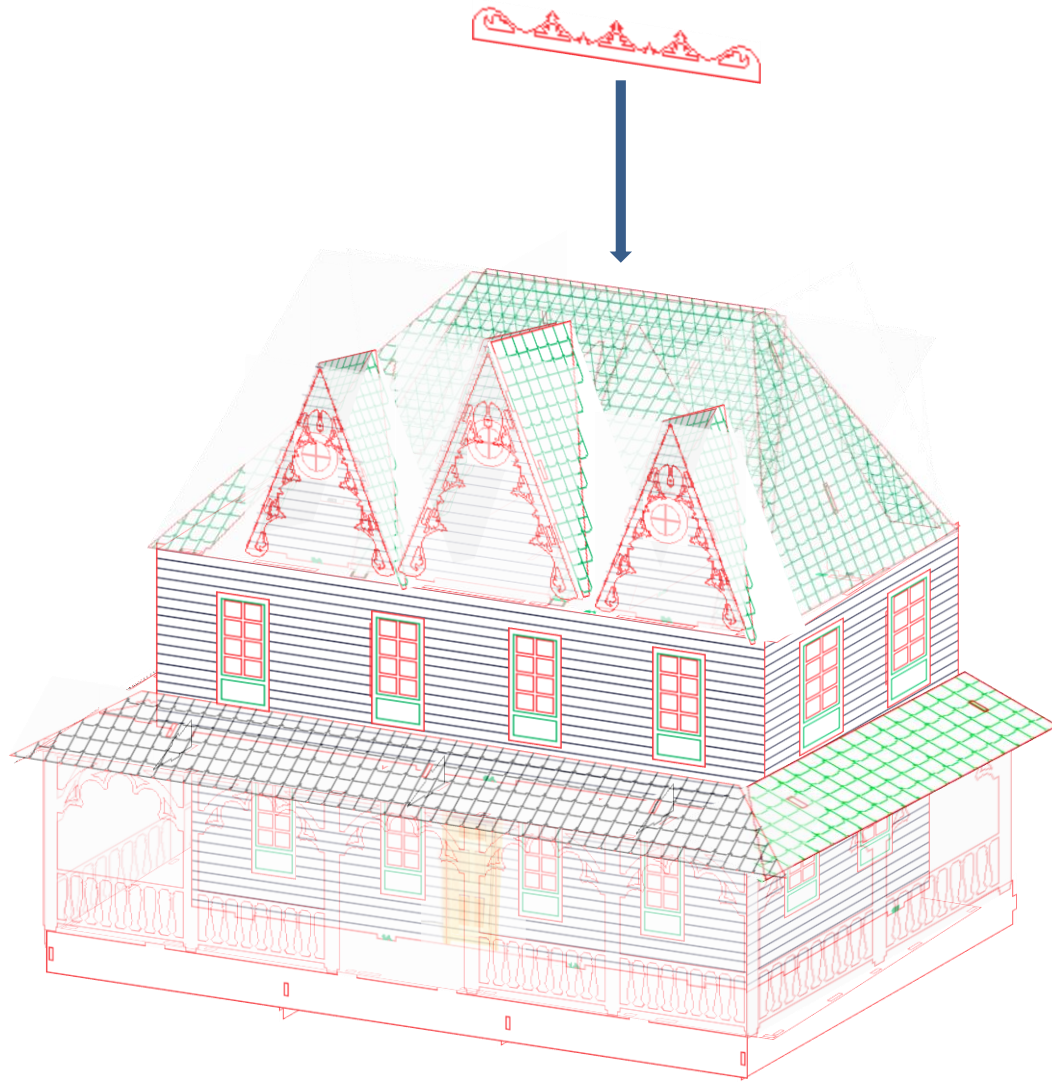


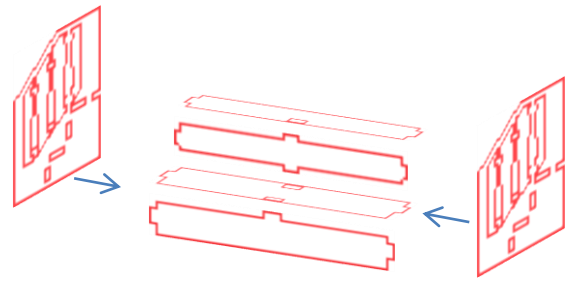
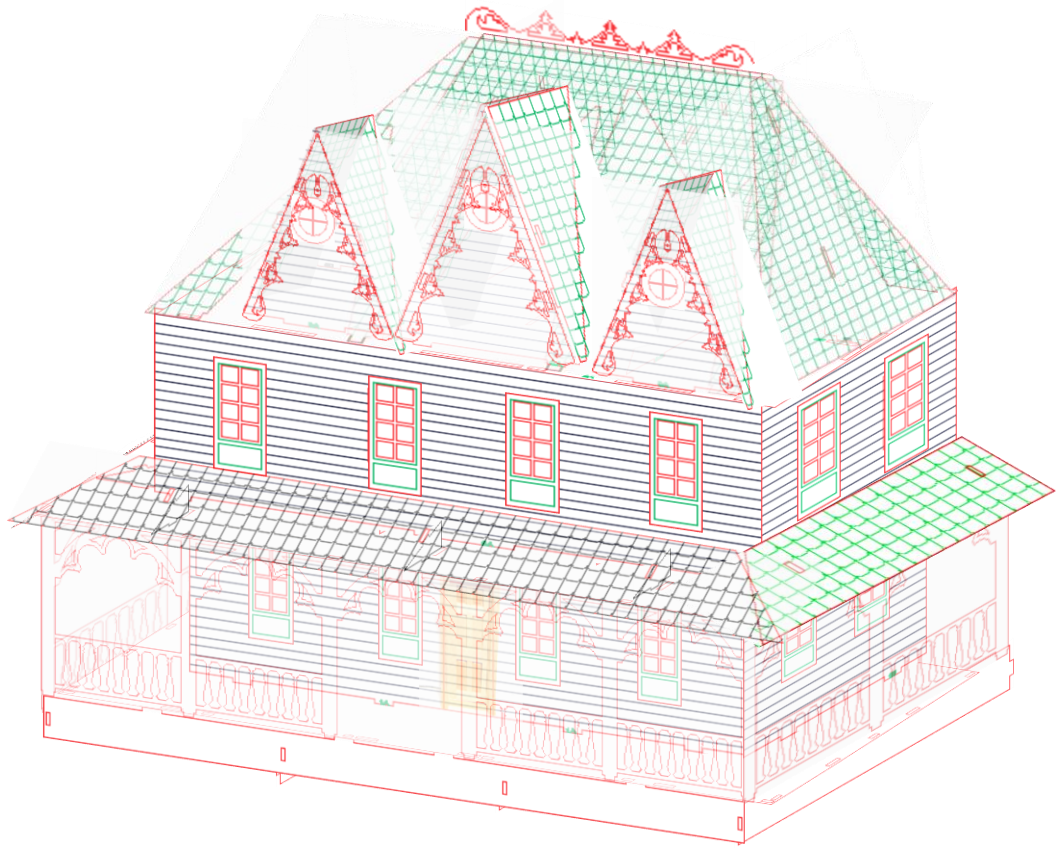


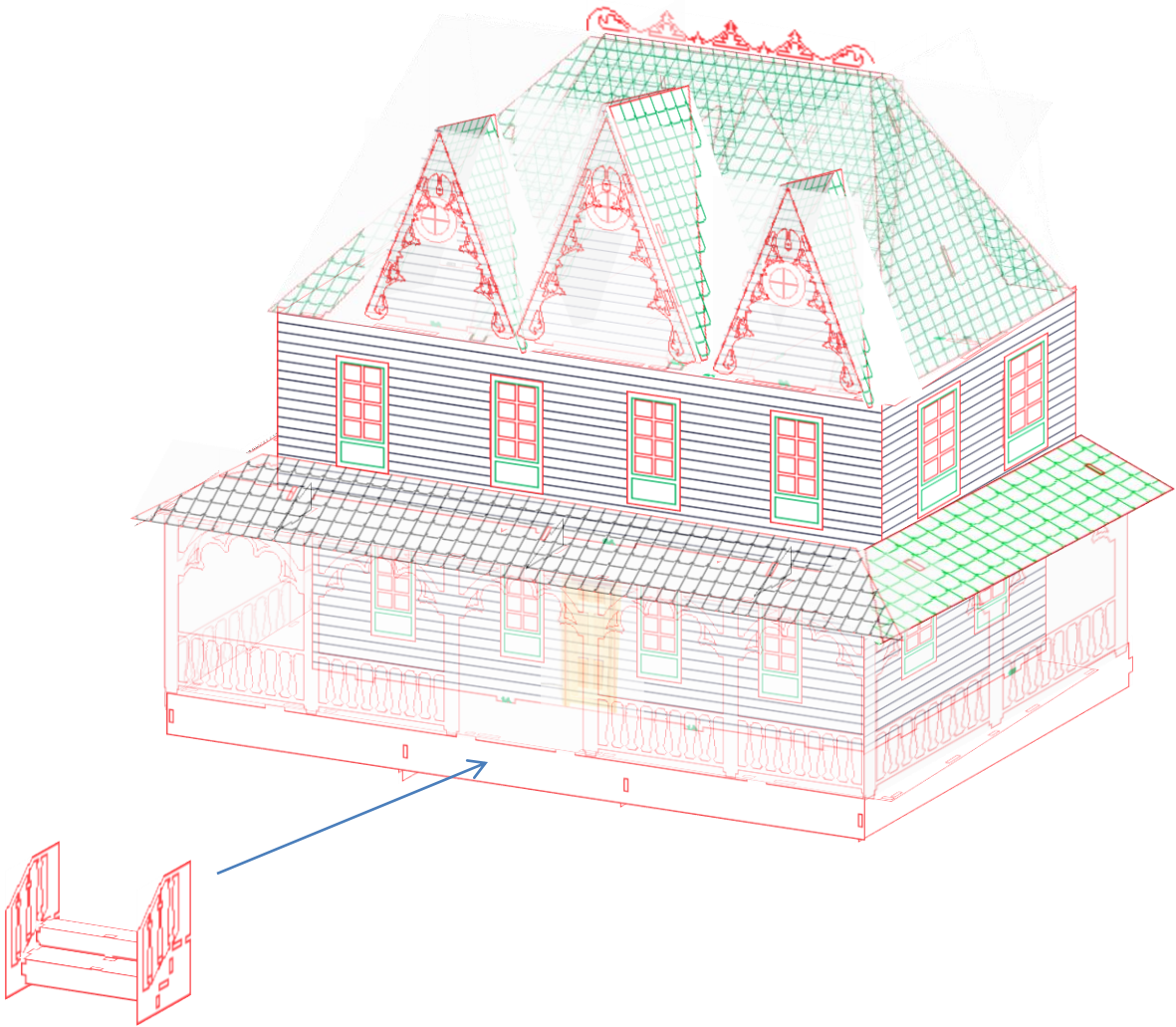
Round Plexi glass goes inside opening in walls and the round frames glue to the walls on the outside and inside to hold in place

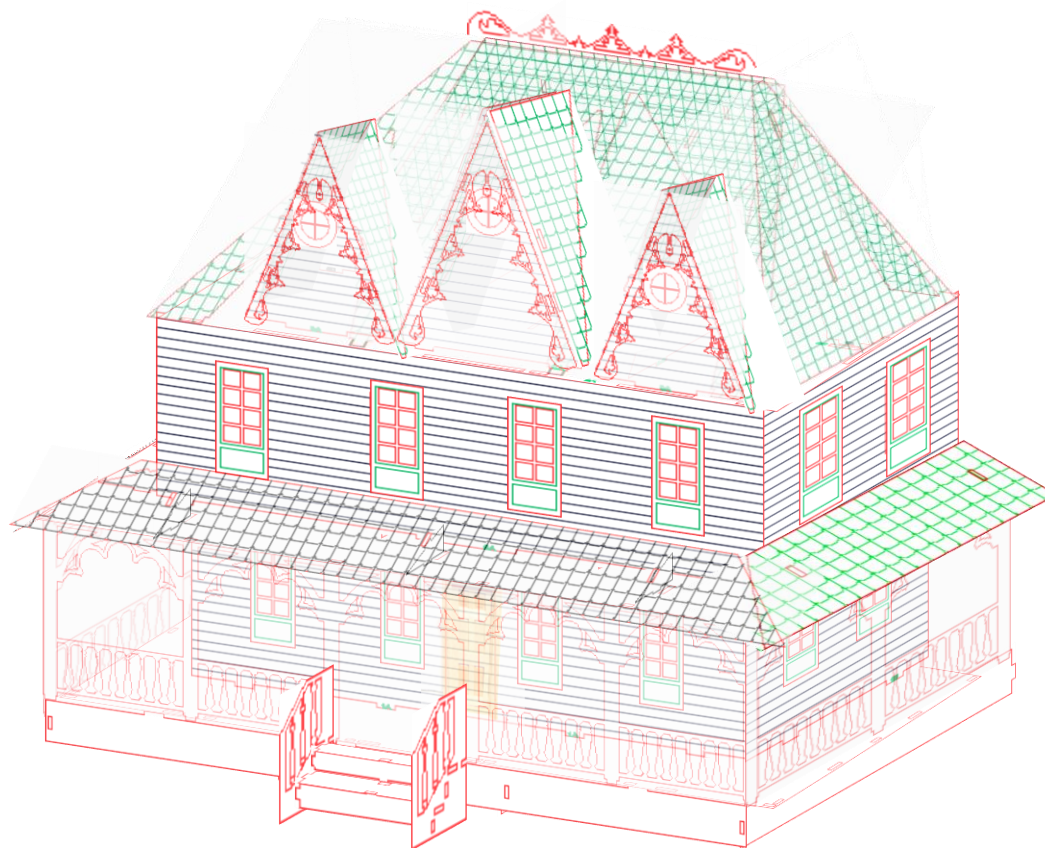












With the steps in we have now completed assembly of the Country Villa.
That is it, we are all assembled. Congratulations.

Laser Dollhouse Designs.
www.laserdollhouses.com
laserdollhouses@aol.com