

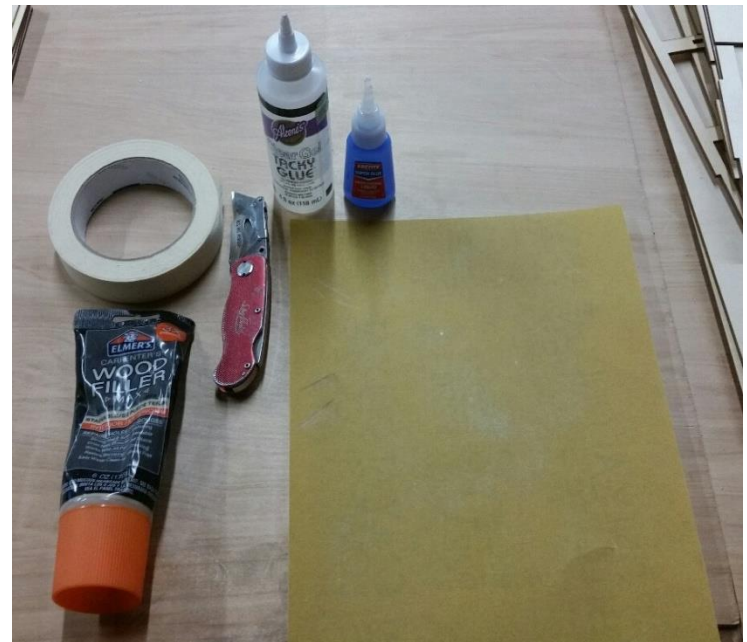
Clarkson Craftsman Mansion dollhouse
Assembly Instruction by
Laser Dollhouse Designs



NOTE 1: Please do a dry assembly using only tape to hold house together. This will get you familiar with parts, location, and fit. This also gives you a chance to visualize how you want to approach the build. Also read each step and adhere to items that should not be glued till a later time..

Materials for build;

1. Wood glue, you may use Titebond, Elmers, tacky or any good wood glue. Tacky wood glue dries clear and is preferred.
 2. Masking tape to hold house in place during dry assembly and gluing.
 3. Utility knife if needed for trimming.
 4. 220 grit sandpaper.
 5. Wood Filler
 6. Paint, any acrylic paint.
- Hardware store carry sample cans which are not expensive and are enough.
7. Pin nails 1/2x19 (optional if nailing house)



House Assembly

Step 1. Complete dry assembly, next paint all parts and fit to house without painting to assure proper fit with paint.

Step 2. Locate base as seen in figure 1.

Step 3. Install first floor walls, each wall on the tab is listed to location on base. Match wall 1A to location on base 1A and so on. Figure 2.



Figure 1



Figure 2

House Assembly

Step 4. Locate a window, interior frame and glass, figure 3, paint parts to desired color. Next turn window upside down and assure window pane rear side is clean of obstruction , figure 4. Next install superglue around outside of the pane, remove protective cover from glass and press glass into window behind pane and apply slight pressure holding down for 30 seconds as glue sets, figure 5. Complete same process for remaining windows.

Step 5. Locate and remove main door from door assembly frame by removing bottom frame and paint door next install glass thru opening in top of door frame by sliding into opening, then assemble and install door and window into first floor of house, figure 6.



Figure 3



Figure 4



Figure 5



Figure 6

House Assembly

Step 6. Install interior window and main door frame, figure 7 and 8.

Step 7. Turn first floor roof (2nd floor) upside down and install garage guide rails as seen in figure 9 (DO NOT GLUE guide rails to roof). Note don't glue as we will remove floor once rail glues to front wall. Next apply wood glue to the front of the guide rails do not use super glue as we will test door function soon, figure 10. Finally install the 2nd floor onto the first floor walls and clamp the guide rails to front wall as seen in figure 11 to hold rails in place as we will remove roof.



Figure 7

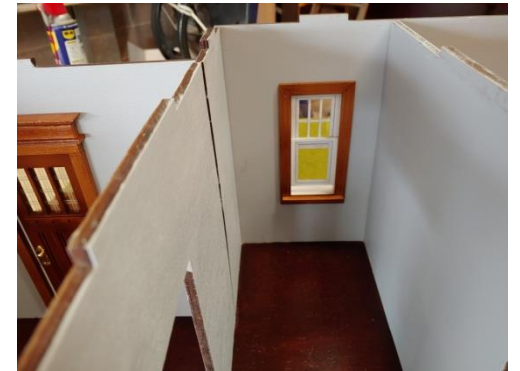


Figure 8

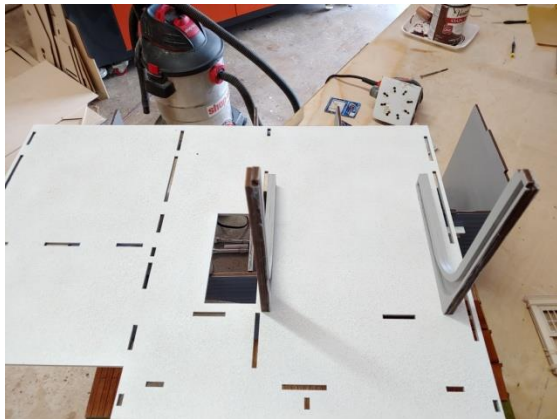


Figure 9



Figure 10



Figure 11

House Assembly

Step 8. With clamps in place remove roof, figure 12. Next install glass into the top of the garage door, figure 13. Now install garage door into guide rails as seen in figure 14. Finally re-install the 2nd floor as seen in figure 15. Test door and make sure door runs freely, if not apply a small amount of WD40 to free the door. Once all is fine allow time for guide rail glue to dry. Remove 2nd floor and glue to first floor walls.



Figure 12



Figure 13



Figure 14



Figure 15

House Assembly

Step 9. Take lower door frame off and paint interior doors, figure 16. Next assemble door and install into house so that doors open away from hallway as seen in figure 17.

Step 10. Install garage door exterior frame as seen in figure 18. Next install porch pillars as seen in figure 19.



Figure 16



Figure 17



Figure 18



Figure 19

House Assembly

Step 11. Complete flooring, interior walls, and install 2nd floor interior walls 2F & 2G as seen in figure 20.

Step 12. Install 3rd floor onto the two interior walls, figure 21.

Step 13. Install exterior walls 2A thru 2E as seen in figure 22. Make sure walls are seated when glued and that they are glued inside to the 3rd floor. Verify that all walls are even at top to walls next to them. Pin nail or tape to hold while glue dries. You may also WITHOUT gluing add 4th floor to maintain walls and remove once glue dries as done with first floor.



Figure 20



Figure 21



Figure 22

House Assembly

Step 14. Install windows, figure 23. Next install interior window frames.

Step 15. Install the three balcony post and railing, figure 24. Make sure that the siding groves are facing correct way (down).

Step 16. Install French door on balcony, figure 25. Next install 3rd floor interior walls, figure 26.



Figure 23



Figure 24



Figure 25



Figure 26

House Assembly

Step 17. Install interior doors and again make sure doors open to rooms and not hallway, figure 27. Next install 4th floor base, figure 28.

Step 18. Install 4th floor walls 4A-4C, figure 29. Next install front alcove right roof panel, figure 30.

Step 19. Install mid-roof panel frames as seen in figure 31. Next install all mid-roof panels, figure 32.



Figure 27



Figure 28



Figure 29



Figure 30



Figure 31



Figure 32

House Assembly

Step 20. Install interior roof coffer if purchased, figure 33.

Step 21. Install main right roof panel, figure 34. Next install right, left and front dormer walls, figure 35. Then install dormer roof panel, figure 36.

Step 22. Install dormer window and interior frame, figure 37. Next install interior dormer knee wall and window base frame, figure 38.



Figure 33



Figure 34



Figure 35



Figure 36



Figure 37



Figure 38

House Assembly

Step 23. Install triangle extended wall and alcove knee wall as seen in figure 39.

Step 24. Install main left roof panel, figure 40. Next install left dormer wall as seen in figure 41. Next install mid roof on dormer as seen in figure 42. Then install double window, interior frame and dormer roof panels, figure 43.



Figure 39



Figure 40



Figure 41



Figure 42



Figure 43

House Assembly

Step 25. Locate the two upper interior roof triangle frames and upper roof panel, figure 44. Assemble the three parts to form the interior upper roof panel, figure 45.

Step 26. Install the roof panel to the interior as seen in figure 46.

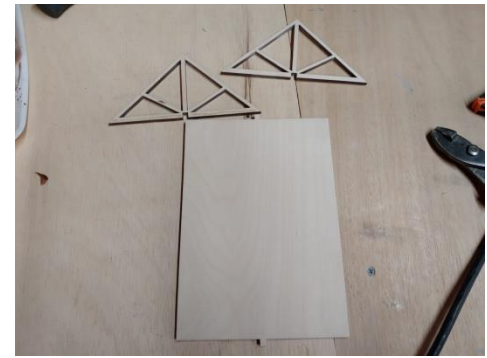


Figure 44



Figure 45



Figure 46

Staircase and landing Assembly

Note: Complete step for all three staircases.

Step 1. Ensure you have one handrail, one baluster string, staircase frame, 13 treads, and two post, figure 1. Paint or stain items to preferred color.

Step 2. Install treads for left handrail by installing tread holes on left side. The opposite side should have tread even to staircase frame, figure 2.

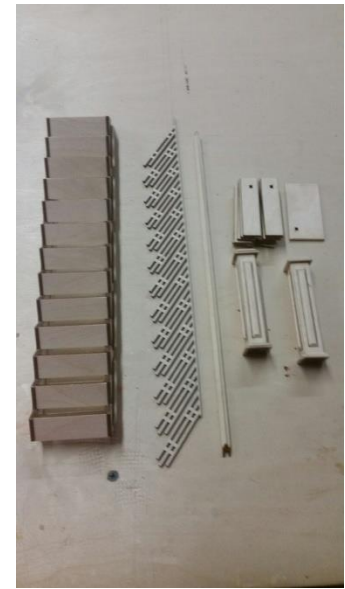


Figure 1

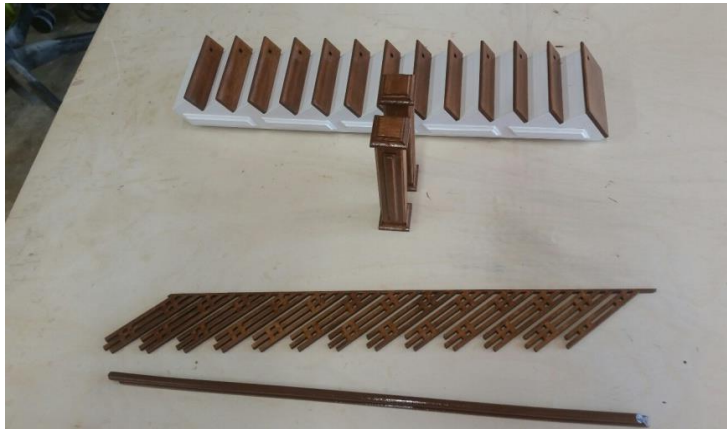


Figure 2

Staircase Assembly

Step 3. Run glue into the track under the handrail then insert baluster string into the track making sure the rail is centered at the top and bottom. Sand with 220 grit sand paper if needed, figure 3.



Figure 3

Step 4. Install railing assembly into the treads, figure 4.



Figure 4

Step 5. Install lower and upper newel post aligning to handrail, figure 5. Next install staircases into the house, figure 6.



Figure 5



Figure 6

Staircase Assembly

Step 6. Locate the landing rails, handrail and foot rails. Assemble making sure that the longer gapped spaces are down, figure 7. Complete this to where you have the two longest ones as singles and the other as an enclosure. Use the top floor as reference for rail location, figure 8.

Step 7. Install the two single landing rails into the house on the 2nd and 3rd floors, figure 9. Next install the top floor landing rails as seen in figure 10. House assembly completed, congratulations!!



Figure 7



Figure 8



Figure 9

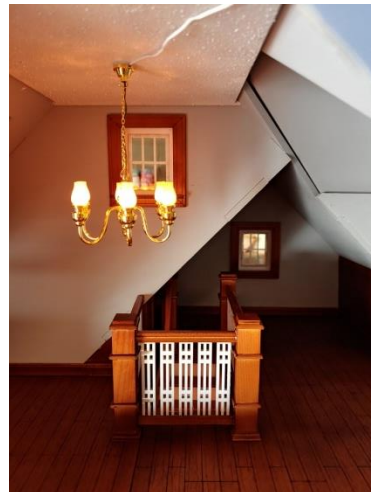


Figure 10

Shingle install pattern

Step 1. Shingles not included in kit, purchase our asphalt shingles at www.laserdollhouses.com you will require 3 bags to complete house.

Install mid-roof shingles. To install shingles you may use wood glue or super glue. If using super glue wear thin rubber gloves to protect hands. Take a strip and lay upside down even to bottom edge, once on press each shingle down firmly to seat, figure 1. Next trim excess with a utility knife, make sure blade is new for clean easy cuts.

Step 2. Install next row of shingles by aligning each shingle square center to the slit of the lower shingle, figure 2.



Figure 1



Figure 2

Garage Assembly continued

Step 3. Continue with next row aligning next shingle row with top of the shingle cutout dividers, follow same process to complete house, fig. 3 & 4.



Figure 3



Figure 4



Laser Dollhouse Designs

Website: www.laserdollhouses.com

Email: lfricke@laserdollhouses.com